



OPEN ACCESS

ORIGINAL RESEARCH ARTICLE

Comparative trends in coronary heart disease subgroup hospitalisation rates in England and Australia

Lee Nedkoff,¹ Raphael Goldacre,² Melanie Greenland,¹ Michael J Goldacre,² Derrick Lopez,¹ Nick Hall,² Matthew Knuiiman,¹ Michael Hobbs,¹ Frank M Sanfilippo,¹ F Lucy Wright³

► Additional material is published online only. To view please visit the journal online (<http://dx.doi.org/10.1136/heartjnl-2018-314512>).

¹School of Population and Global Health, The University of Western Australia, Perth, Western Australia, Australia

²Unit of Health-Care Epidemiology, Big Data Institute, Li Ka Shing Centre for Health Information and Discovery, University of Oxford, Oxford, England

³Nuffield Department of Population Health, University of Oxford, Oxford, UK

Correspondence to

Dr Lee Nedkoff, School of Population and Global Health, The University of Western Australia, Perth, WA 6009, Australia; lee.nedkoff@uwa.edu.au

Received 20 November 2018

Revised 20 January 2019

Accepted 12 February 2019

Published Online First

4 April 2019

ABSTRACT

Background Population-based coronary heart disease (CHD) studies have focused on myocardial infarction (MI) with limited data on trends across the spectrum of CHD. We investigated trends in hospitalisation rates for acute and chronic CHD subgroups in England and Australia from 1996 to 2013.

Methods CHD hospitalisations for individuals aged 35–84 years were identified from electronic hospital data from 1996 to 2013 for England and Australia and from the Oxford Region and Western Australia. CHD subgroups identified were acute coronary syndromes (ACS) (MI and unstable angina) and chronic CHD (stable angina and 'other CHD'). We calculated age-standardised and age-specific rates and estimated annual changes (95% CI) from age-adjusted Poisson regression.

Results From 1996 to 2013, there were 4.9 million CHD hospitalisations in England and 2.6 million in Australia (67% men). From 1996 to 2003, there was between-country variation in the direction of trends in ACS and chronic CHD hospitalisation rates ($p < 0.001$). During 2004–2013, reductions in ACS hospitalisation rates were greater than for chronic CHD hospitalisation rates in both countries, with the largest subgroup declines in unstable angina (England: men: -7.1% /year, 95% CI -7.2 to -7.0 ; women: -7.5% /year, 95% CI -7.7 to -7.3 ; Australia: men: -8.5% /year, 95% CI -8.6 to -8.4 ; women: -8.6% /year, 95% CI -8.8 to -8.4). Other CHD rates increased in individuals aged 75–84 years in both countries. Chronic CHD comprised half of all CHD admissions, with the majority involving angiography or percutaneous coronary intervention.

Conclusions Since 2004, rates of all CHD subgroups have fallen, with greater declines in acute than chronic presentations. The slower declines and high proportion of chronic CHD admissions undergoing coronary procedures requires greater focus.

INTRODUCTION

Despite a consistent decline in coronary heart disease (CHD) mortality since the 1970s, CHD is the largest contributor to mortality in most developed countries.¹ CHD remains a major reason for hospitalisation, although there is some evidence that the morbidity burden from CHD has declined over time.^{2–3} Many studies investigating CHD

have focused on myocardial infarction (MI),^{4–5} yet hospitalisations for CHD cover the spectrum of acute and chronic presentations, and whether their contribution to the morbidity burden has changed over time is unclear.

Examining variations in CHD trends between countries provides important insights into prevention and management,⁶ particularly where differences in disease rates or patterns of care exist. CHD mortality rates have been declining in Australia since the late 1960s,⁷ but the decline started around 10 years later in the UK,⁸ and years of life lost attributable to CHD have been higher in the UK than Australia since the 1990s.⁹ In contrast, MI event rates declined in England between 2002 and 2010,¹⁰ whereas in Australia during the same period, there was no reduction.¹¹ However, studies comparing CHD morbidity between the two countries are limited, and standardised definitions and methods are required to enable direct comparisons.

The primary aim of the study was to compare long-term temporal trends in hospitalisation rates for acute and chronic CHD subgroups and total CHD between England and Australia, stratified by age and sex, and secondarily, to analyse regional linked data from both countries to examine the impact of inter-hospital transfers, early readmissions and coronary procedures on trends.

METHODS

Setting and data sources

In 2013, the population of England was 53.9 million and of Australia 23.3 million, with 17% and 14%, respectively, aged 65 years and over.^{12–13} Both countries have a universal healthcare system. Coronary care in Australia is provided in public and private hospitals, while the majority of coronary care in England is delivered in National Health Service (NHS) hospitals. National hospitalisation data were available for all NHS hospitalisations in England and all public and private hospitalisations in Australia. We also used regional person-linked data from both countries for comparisons using record linkage—the Oxford Record Linkage Study (ORLS) and Western Australia (WA)—both of which covered a population of 2.5 million in 2013 (online supplementary information).¹² Both regional datasets covered the period 1985–2013.



© Author(s) (or their employer(s)) 2019. Re-use permitted under CC BY-NC. No commercial re-use. See rights and permissions. Published by BMJ.

To cite: Nedkoff L, Goldacre R, Greenland M, et al. *Heart* 2019;**105**:1343–1350.

Standardisation of hospital datasets

Although person-linked English hospitalisation data are available from April 1998 onwards, we used national datasets without person-identifiers for the main analyses, as person-linked data are not available nationally in Australia. In both datasets, each record represents a new admission or interhospital transfer. In the English dataset, a new record could also represent a change between medical specialists within the same admission (Finished Consultant Episode [FCE]); thus, we only used records coded as the first FCE in a series of admissions to increase comparability with Australian admissions (online supplementary information). Australian data were available aggregated by sex, 5-year age group and year.

Both regional datasets were person linked. Record matching and linkage for ORLS up to 1998 was undertaken using unique personal identifiers. From 1999 onwards, ORLS was a subset of the Hospital Episodes Statistics dataset with linkage conducted by NHS Digital. Record linkage for the WA dataset was undertaken by the WA Department of Health using probabilistic matching based on name, sex, date of birth and address, with manual checking of uncertain links.

Identification of CHD subgroups

Datasets included all hospitalisation and mortality records for CHD. Details of the International Classification of Diseases (ICD) versions in use in both countries are in online supplementary information. We have previously shown differences in coding standards for ST-elevation MI (STEMI) and non-ST-elevation MI (NSTEMI) between countries¹⁴ and therefore analysed total MI. People aged 35–84 years at the time of CHD hospitalisation were included in the study.

For hospital admissions, CHD was identified from the principal diagnosis field. Three aggregated groupings were identified: total CHD (ICD-9 410–414 and ICD-10 I20–I25), acute coronary syndromes (ACS; comprising MI+unstable angina) and chronic CHD (stable angina+other CHD). Subgroups were MI (ICD-9/CM 410 and ICD-10 I21 and I22), unstable angina (411.1 and I20.0), stable angina (413, I20.1–I20.9) and ‘other CHD’ (411.0, 411.8, 414, I23, I24 and I25). The other CHD subgroup includes chronic ischaemic heart disease (IHD) (I25), other acute IHD (I24) and complications following MI (I23); however, the I25 code comprises >95% of all other CHD admissions in both countries for this subgroup. The main period used in this study is 1996–2013. We chose not to include subgroup data prior to 1996, as there was no fourth-digit ICD code for unstable angina in ICD-9, and regional data show inconsistent trends in non-MI subgroup hospitalisations during the 1980s and early 1990s.¹⁵

CHD deaths (ICD-10 I20–I25) were identified from the underlying cause of death. To account for possible differences in the propensity to code CHD as the underlying cause of death, we also identified CHD deaths from multiple-cause-coded mortality data, available from 1995 in England, and from 1997 in Australia.

Event measures

All analyses of national hospitalisation data used unlinked admissions. We also analysed person-linked data from the regional datasets to determine the impact of transfers and early readmissions on trends, based on our published methods.¹⁵ Briefly, series of interhospital transfers were considered part of a ‘linked admission’. Because more than one CHD subgroup can be recorded as the principal diagnosis within a linked admission,

it was labelled according to a diagnosis hierarchy (MI>unstable angina>stable angina>other CHD).¹⁵ We also created 28-day episodes, where any readmission within 28 days was included in the 28-day episode, and the diagnosis hierarchy was applied. To describe recent hospitalisation history, we identified admissions for ACS and chronic CHD in the 1 year prior to each linked admission.

Coronary angiography, percutaneous coronary intervention (PCI) and coronary artery bypass graft (CABG) procedures were identified for each linked admission in the ORLS and WA data (online supplementary information). A hierarchy was used to assign procedure type if more than one procedure was recorded during the same linked admission (CABG>PCI>angiography only).

Statistical analysis

All analyses were undertaken separately for men and women. Average annual number of hospitalisations in each country are presented separately for 1996–2003 and 2004–2013. The average age at admission is presented as mean (SD). For the Australian national data, mean age was estimated by multiplying the midpoint of each 5-year age group by the frequency in that age group and dividing by total number of admissions. P values for between-country comparison of mean age are from independent t-tests.

Annual age-standardised and age-specific rates (35–54, 55–64, 65–74 and 75–84 years) were calculated by the direct method using 5-year age groups and the 2013 European Standard Population. Numerators for hospitalisation rates were the annual number of admissions for each CHD subgroup, and for mortality rates, the annual number of CHD deaths. Denominators were annual population numbers from each jurisdiction.

Age-adjusted trends for hospitalisation rates were estimated from Poisson regression models, with 5-year age group and year (continuous) in the models. Because of non-linear trends in some CHD subgroups, and to separate early and contemporary changes, trends were calculated separately for 1996–2003 and 2004–2013. Trends are presented as average annual percentage changes calculated from the exponential of the beta-coefficient for year with 95% CIs. The interaction term for year*country was then included in each model to identify differences in between-country trends, with an interaction term for country*5-year age group to adjust for temporal between-country variation in age distribution. Sensitivity analyses were also undertaken comparing trends in unlinked admissions, linked admissions and 28-day episodes within each of ORLS and WA. All statistical analyses used SAS V.9.4.

RESULTS

Cohort characteristics

From 1996 to 2013, there were 4 859 492 CHD hospitalisations in England (67.1% men) and 2 592 021 in Australia (67.9% men). For English men, the average annual number of total CHD hospitalisations was higher during 2004–2013 than 1996–2003, but for English women and Australian men and women, the average annual number of total CHD hospitalisations was lower in the later versus earlier period (table 1). The mean age at time of MI hospitalisation was on average 1.3 years older in England than Australia but was younger in England for all non-MI subgroups in both periods ($p<0.0001$).

Characteristics of ORLS and WA CHD hospitalisations are shown in online supplementary table 1. The mean age of patients in each subgroup in ORLS and WA was around 1 year

Table 1 Baseline characteristics of coronary heart disease (CHD) hospitalisations in England and Australia*

	England					Australia				
	Myocardial infarction	Unstable angina	Stable angina	Other CHD	Total CHD	Myocardial infarction	Unstable angina	Stable angina	Other CHD	Total CHD
Men										
1996–2003										
Total admissions, n	367 958	248 227	233 889	596 098	1 446 172	186 714	253 397	172 345	182 264	794 720
Average annual admissions, n	45 995	31 028	29 236	74 512	180 772	23 339	31 675	21 543	22 783	99 340
Mean age, years (SD)	65.3 (11.4)	64.4 (11.1)	63.9 (11.2)	62.5 (9.9)	63.9 (10.8)	63.9 (12.0)	65.0 (11.3)	64.6 (10.9)	64.2 (10.5)	64.5 (11.2)
2004–2013										
Total admissions, n	425 569	228 079	207 305	988 739	1 849 692	317 623	208 878	183 805	255 517	965 823
Average annual admissions, n	42 557	22 808	20 731	98 874	184 969	31 762	20 888	18 381	25 552	96 582
Mean age, years (SD)	65.6 (11.8)	64.9 (11.7)	64.9 (11.4)	64.6 (10.3)	65.0 (11.1)	64.4 (12.0)	65.2 (11.4)	66.0 (10.8)	66.3 (10.1)	65.4 (11.2)
Women										
1996–2003										
Total admissions, n	183 859	151 792	161 885	213 644	711 180	85 083	147 494	90 187	67 034	389 798
Average annual admissions, n	22 982	18 974	16 189	26 706	88 898	10 635	18 437	11 273	8 379	48 725
Mean age, years (SD)	71.0 (9.9)	68.2 (10.7)	67.5 (11.1)	66.0 (9.9)	68.2 (10.6)	70.2 (11.0)	68.9 (10.9)	68.1 (11.0)	67.7 (10.1)	68.8 (10.9)
2004–2013										
Total admissions, n	197 293	136 597	147 188	371 370	852 448	140 406	114 280	94 425	92 569	441 680
Average annual admissions, n	19 729	13 660	14 719	37 137	85 244	14 041	11 428	9 443	9 257	44 168
Mean age, years (SD)	70.9 (10.8)	68.2 (11.5)	67.5 (11.4)	67.6 (10.1)	68.7 (10.9)	69.2 (11.7)	67.8 (11.6)	68.1 (11.3)	69.0 (10.0)	68.5 (11.3)

*Hospitalisations are from national unlinked data. $P < 0.0001$ for all between-country comparisons of mean age within each subgroup, from independent t-tests.

younger than their respective national counterparts. In around 10% of MI hospitalisations in both regions, a hospitalisation for either ACS or chronic CHD was recorded in the year preceding the MI. Around a quarter of other CHD hospitalisations in ORLS and 15% in WA were preceded by a chronic CHD admission.

Trends in total CHD

In 1996, hospitalisation rates for total CHD were two times higher in Australian than English men: 3049 (95% CI 3029 to 3069) and 1523/100 000 (95% CI 1516 to 1531) respectively, and 2.2 times higher in women: 1435 (95% CI 1422 to 1448) and 638/100 000 (95% CI 633 to 642), respectively

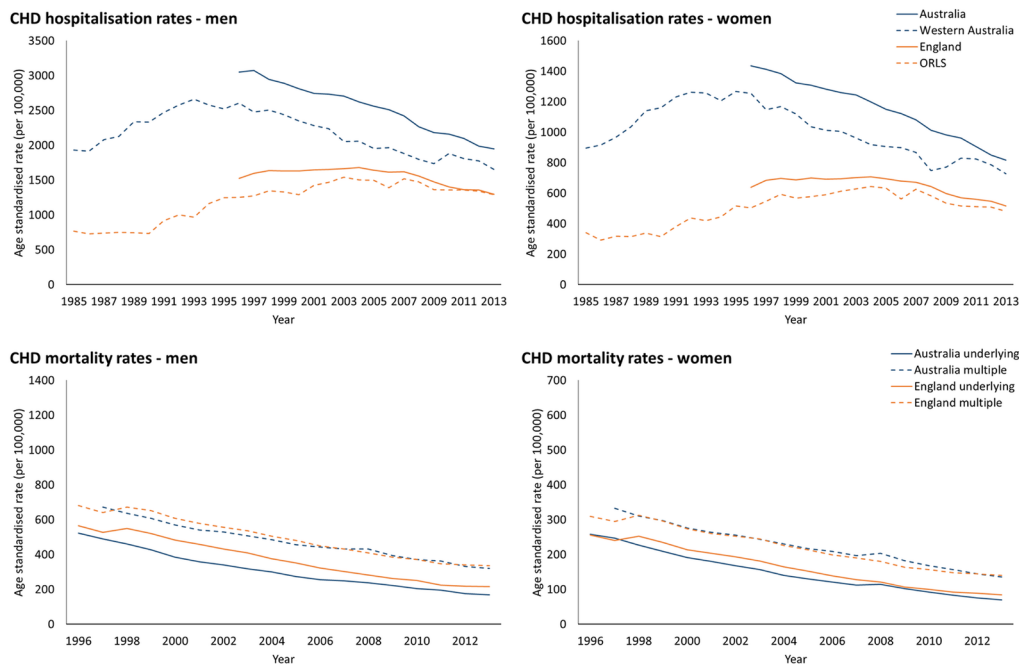


Figure 1 Age-standardised total coronary heart disease (CHD) hospitalisation rates and mortality rates from underlying and multiple-cause coded cause of death in England and Australia. ORLS, Oxford Record Linkage Study.

Table 2 Age-adjusted trends in hospitalisation rates for coronary heart disease (CHD) subgroups in England and Australia

	Average annual % change (95% CI)*			
	1996–2003		2004–2013	
	England	Australia	England	Australia
Men				
Total CHD	+0.8 (+0.7 to +0.9)	−2.4 (−2.5 to −2.3)†	−3.0 (−3.1 to −3.0)	−3.5 (−3.6 to −3.4)†
Aggregated subgroups†				
Acute coronary syndrome	−0.4 (−0.5 to −0.3)	−1.8 (−1.9 to −1.7)†	−4.5 (−4.6 to −4.4)	−4.2 (−4.3 to −4.2)†
Chronic CHD	+1.7 (+1.6 to +1.8)	−3.2 (−3.4 to −3.1)†	−2.2 (−2.3 to −2.2)	−2.6 (−2.7 to −2.5)†
Subgroup				
Myocardial infarction	−1.9 (−2.0 to −1.7)	+2.2 (+2.0 to +2.4)†	−3.1 (−3.2 to −3.0)	−1.4 (−1.5 to −1.2)†
Unstable angina	+3.9 (+1.7 to +2.1)	−4.6 (−4.8 to −4.5)†	−7.1 (−7.2 to −7.0)	−8.5 (−8.6 to −8.4)†
Stable angina	−6.1 (−6.2 to −5.9)	−5.4 (−5.6 to −5.2)†	−3.3 (−3.4 to −3.1)	−6.2 (−6.3 to −6.0)†
Other CHD	+4.9 (+4.8 to +5.0)	−1.1 (−1.3 to −0.9)†	−2.0 (−2.1 to −1.9)	0.0 (−0.1 to +0.2)†
Women				
Total CHD	+0.9 (+0.8 to +1.0)	−2.2 (−2.3 to −2.1)†	−3.5 (−3.6 to −3.4)	−4.1 (−4.2 to −4.0)†
Aggregated subgroup†				
Acute coronary syndrome	+0.4 (+0.3 to +0.6)	−2.0 (−2.2 to −1.8)†	−5.1 (−5.1 to −4.9)	−4.6 (−4.7 to −4.5)†
Chronic CHD	+1.3 (+1.2 to +1.5)	−2.5 (−2.7 to −2.3)†	−2.5 (−2.6 to −2.4)	−3.4 (−3.6 to −3.3)†
Subgroup				
Myocardial infarction	−2.0 (−2.2 to −1.8)	+2.3 (+2.0 to +2.6)†	−3.3 (−3.5 to −3.2)	−1.3 (−1.4 to −1.1)†
Unstable angina	+3.5 (+3.2 to +3.7)	−4.4 (−4.6 to −4.2)†	−7.5 (−7.7 to −7.3)	−8.6 (−8.8 to −8.4)†
Stable angina	−4.3 (−4.5 to −4.1)	−4.5 (−4.7 to −4.2)	−4.5 (−4.7 to −4.3)	−5.9 (−6.1 to −5.7)†
Other CHD	+5.9 (+5.7 to +6.1)	+0.3 (0 to +0.6)†	−1.7 (−1.8 to −1.6)	−0.8 (−1.1 to −0.6)†

*Estimated from the exponential of the beta-coefficient for calendar year from age-adjusted Poisson regression models.

† $P < 0.001$ from p value for interaction for country*year (from Poisson regression model for between-country comparison of age-adjusted trends).

‡Acute coronary syndrome comprises myocardial infarction+unstable angina; chronic CHD comprises stable angina+other CHD.

(figure 1A,B). There was an age-adjusted increase in rates in England from 1996 to 2003, followed by a significant decline from 2004 onwards, whereas CHD rates declined in Australia throughout the study period (table 2). Mortality rates with CHD as the underlying cause of death declined in men (England 565 to 215/100 000; Australia 523 to 169/100 000) and women (England 255 to 84/100 000; Australia 258 to 69/100 000), with similar downward trends in multiple-cause coded mortality rates (figure 1C,D).

From 1996 onwards, age-adjusted trends in total CHD in ORLS and WA were similar in direction to national trends (figure 1A,B; online supplementary table 2).

Trends in CHD subgroups

National comparisons

In England, chronic CHD hospitalisations comprised 53% of cases in men and 49% in women during 1996–2003, increasing to 57% and 52%, respectively, during 2004–2013 (figure 2). In Australia, there was a small increase in the proportion of chronic CHD hospitalisations between periods (men: 45% to 46%, women: 40% to 42%).

From 1996 to 2003, ACS hospitalisation rates in women in England increased (+0.4%/year, 95% CI +0.3 to +0.6) but declined marginally in men, while rates of chronic CHD increased for men (+1.7%/year, 95% CI +1.6 to +1.8) and women (+1.3%/year, 95% CI +1.2 to +1.5) (figure 3, table 2). In Australia during the same period, ACS and chronic CHD hospitalisation rates declined significantly in men and women. Trends in ACS in England were underpinned by significant declines in MI and increasing rates of unstable angina; conversely in Australia, MI hospitalisation rates increased significantly, while unstable angina rates declined. Chronic CHD trends during 1996–2003 were underpinned by marked reductions

in stable angina in both countries but differing trends in other CHD (between-country comparison: $p < 0.001$).

During 2004–2013, there were greater declines in ACS in England than Australia ($p < 0.001$), and for chronic CHD, declines were greater in Australia than England ($p < 0.001$). Reductions in ACS rates were greater than for chronic CHD in both countries. The largest declines were in unstable angina in England (men: -7.1% /year, 95% CI -7.2 to -7.0 ; women: -7.5% /year, 95% CI -7.7 to -7.3) and Australia (men: -8.5% /year, 95% CI -8.6 to -8.4 ; women: -8.6% /year, 95% CI -8.8 to -8.4).

National age-specific trends

From 1996 to 2003, age-specific trends in England and Australia reflected trends in each CHD subgroup overall (online

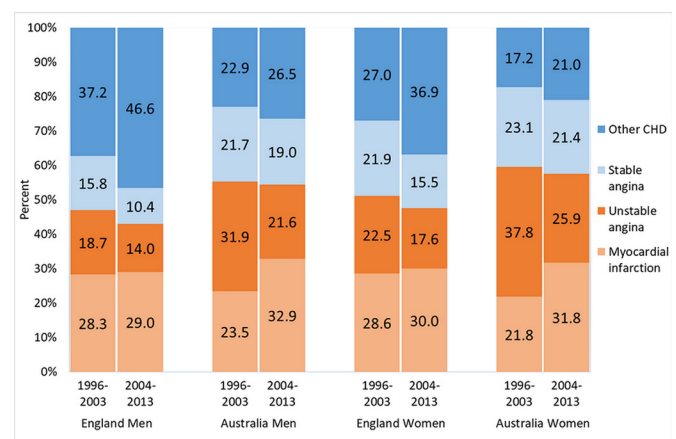


Figure 2 Proportion (%) of hospitalisations for each coronary heart disease (CHD) subgroup in England and Australia.

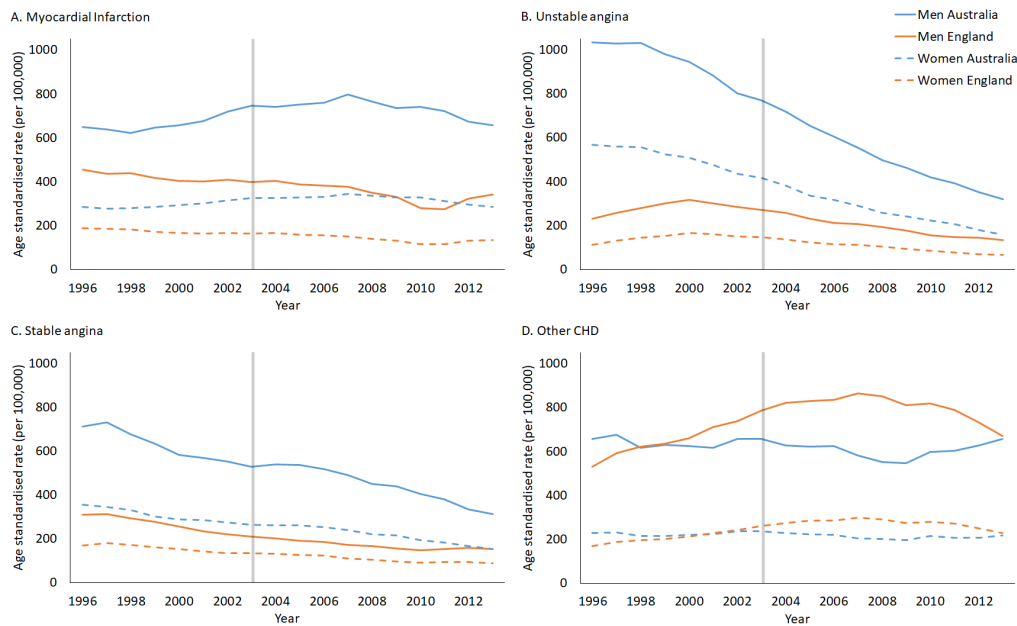


Figure 3 Age-standardised hospitalisation rates of coronary heart disease (CHD) subgroups in England and Australia for (A) myocardial infarction; (B) unstable angina; (C) stable angina; and (D) other CHD.

supplementary table 3). One exception was other CHD in Australia, where hospitalisation rates increased in 75–84-year old men (+4.9%/year, 95% CI +4.4% to +5.4%) and women (+4.8%/year, 95% CI +4.1% to +5.4%). In England, increases in other CHD rates were greater in those over 65 years compared with <65 years. During 2004–2013, other CHD rates increased in men and women aged 75–84 years in both countries. MI rates declined in most age and sex groupings, except for women aged 35–54 years (England: 0%/year, 95% CI –0.5 to +0.4; Australia: +1.9%/year, 95% CI +1.4 to +2.4).

Regional comparisons

Trends in the regional data were generally in the same direction as their national counterparts (online supplementary table 2, online supplementary figure 1). The exceptions were in WA where MI and other CHD rates increased in men and women during 2004–2013 yet declined marginally at a national level, and in ORLS where other CHD rates were unchanged during the same period but declined at a national level. To determine the impact of using unlinked data for national trends, age-adjusted trends were estimated for unlinked, linked admissions and 28-day episodes (online supplementary table 2). Although unlinked rates were higher than either of the linked measures, trends were similar and in the same direction across all measures in ORLS and WA.

Coronary procedures

The proportion of linked admissions involving a coronary procedure increased during the study period for all CHD subgroups, except for stable angina in WA (figure 4). The proportion of other CHD linked admissions where a procedure was undertaken increased in ORLS and WA, and by 2013, the majority of these patients had coronary angiography or revascularisation during hospitalisation (ORLS: men: 84%, women: 83%; WA: men and women: 95%).

DISCUSSION

This binational study of more than 7 million CHD hospitalisations highlights the complexity of trends in acute and chronic presentations within and between countries. Hospitalisation rates for total CHD have decreased in England and Australia, although the decline is more long-standing in the latter. Inter-country variation in trends in some CHD subgroups is apparent. In England, hospitalisation rates for MI declined and those for unstable angina increased during 1996–2003, with a contrasting pattern in Australia. Concurrently, trends in other CHD were increasing in England but decreasing in Australia. From 2004 onwards, rates of acute and chronic CHD consistently fell in both countries but with a greater rate of decline in ACS. This study highlights that around half of all CHD hospitalisations are chronic admissions and that the majority of these now involve coronary angiography or revascularisation.

Trends in CHD subgroups

There are limited data measuring trends in hospitalisation rates across all CHD subgroups within the same population or between countries, with many studies focusing on trends in MI. Variation between countries in trends in MI hospitalisation rates has been apparent since the introduction of the Universal Definition of MI in 2000, although many have reported attenuation of downward trends.^{4 16 17} However, a recent study from Norway reports that declines in MI incidence have accelerated since 2009 compared with prior trends.¹⁸ In the few studies of trends in ACS, generally larger reductions in rates of unstable angina than MI are reported,¹⁶ likely reflecting the impact of increasingly sensitive troponin assays.¹⁹ This pattern was evident in Australia for the whole study period but only in England from 2004 onwards, which could indicate a later ‘troponin effect’ than reported by other countries. Variation in troponin assays and diagnostic thresholds between countries could also contribute to differences in trends of MI and unstable angina.²⁰ The newer high-sensitivity troponin assays were in limited use in Australia during our study period but were introduced in

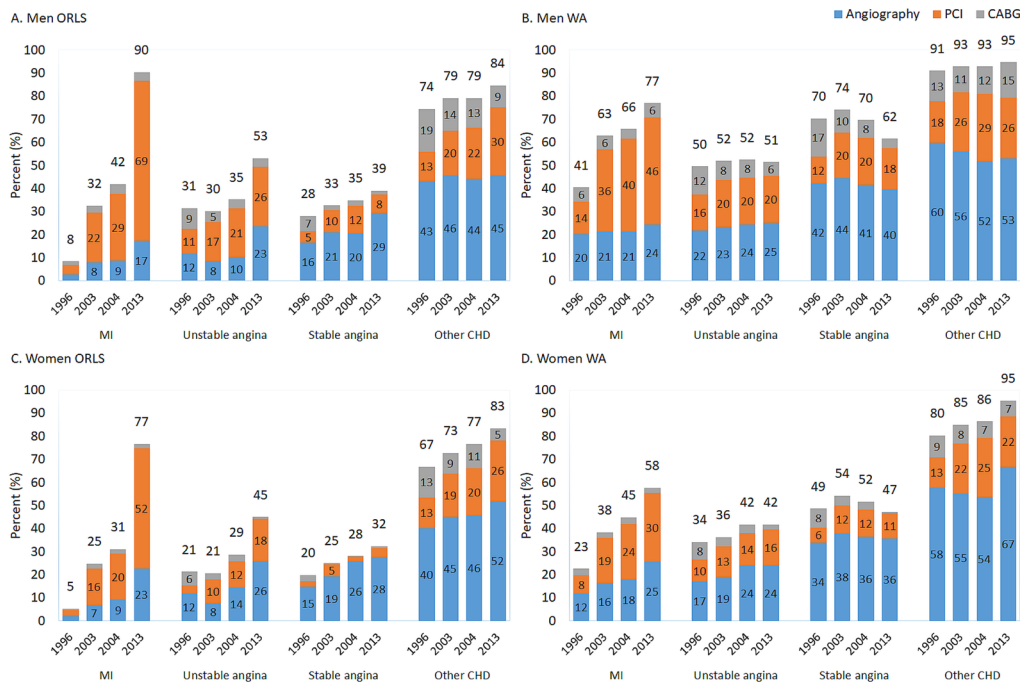


Figure 4 Proportion of admissions where a coronary procedure was undertaken in each coronary heart disease (CHD) subgroup for the Oxford Record Linkage Study (ORLS) and Western Australia (WA). CABG, coronary artery bypass graft; MI, myocardial infarction; PCI, percutaneous coronary intervention.

England around 2010–2011, which may explain the increase in MI rates in England around that time.

Primary care-based studies have reported declining prevalence of angina presentations in England and Australia.^{21–22} Hospitalisation rates for chronic CHD in our study declined consistently since 2004 in both countries, driven by reductions in stable angina admissions. Our findings for other CHD are less consistent, with trends in our study similar to those of a Dutch administrative data study reporting an increase in chronic CHD hospitalisation rates between 1997 and 2008 (using a comparable definition to our other CHD).¹⁷ However, since 2004, this subgroup demonstrated the smallest reduction in rates of all subgroups in our study. Consistent with the Dutch findings was adverse trends in rates of other CHD in older patients.

Despite the fact that half of all CHD hospitalisations are recorded as stable or chronic, there is limited understanding of hospitalisation data for these admissions. Our regional data show that a high proportion of chronic CHD hospitalisations involve coronary angiography or revascularisation, yet there is debate around the use of angiography in the diagnosis of stable CHD and the efficacy of revascularisation in these patients.^{23–24} Additionally, rates and trends of chronic CHD could be affected by differing propensities to manage this condition in an outpatient versus inpatient setting. The increases in hospitalisation rates for other CHD in the older age groups may reflect an increasing propensity to investigate and revascularise older patients, a group in whom outcome data are limited. Nearly a quarter of other CHD patients in our study had a CHD admission in the preceding year, indicating a complex hospital care pathway and consistent with evidence that hospitalised patients with stable CHD are increasingly complex with high levels of comorbidities.²⁵ Trends in chronic CHD subgroups from hospitalisation data may therefore reflect changing disease management and patient casemix rather than the true population burden of chronic CHD.

The higher CHD hospitalisation rates in Australia particularly early in the study period are unlikely to reflect a true difference in CHD burden between the two countries. This is because CHD mortality rates are reasonably similar, and premature mortality including from CHD in the UK has been persistently worse than other EU countries and Australia.⁹ This could indicate that there is a lower threshold for hospitalisation for CHD in Australia, particularly early on for the acute subgroups, reflecting differing management practices. Differences in the use of ICD codes could contribute to differences in rates of subgroups between countries, although this would be unlikely to impact overall CHD rates.

Regional variation

Whole-population studies are essential for understanding disease patterns at the national level, yet regional variation in disease burden and trends occurs. Previous studies report wide regional variation in CHD admission, angiography and revascularisation rates within England and Australia.^{26–27} While trends in national and regional data in our study were generally in the same direction, particularly for the aggregated groupings, we found that any observed differences at a subgroup level were primarily in trends in MI and other CHD hospitalisations. Differences between national and WA trends in MI could result from differences in implementation of diagnostic criteria; however, the reasons for this are not clear. Given that other CHD hospitalisations appear to reflect procedure-related admissions, regional differences in trends could be associated with availability and utilisation of specialised services and PCI-capable centres rather than changing pattern of disease burden.

Limitations

To account for possible differences in the use of ICD codes between countries, we reviewed all relevant coding standards

and matched clinical diagnoses with ICD coding descriptors to inform comparable subgroups. Differences in coding standards for STEMI and NSTEMI between England and Australia up to 2013 informed our analysis of MI as an aggregated grouping.¹⁴ We classified stable angina separately from unstable angina, in contrast to other studies,¹⁷ as this matches clinical classification more closely, and stable angina hospitalisations are commonly elective admissions, therefore more aligned with other CHD (unpublished data). The use of unlinked data in national analyses will overestimate admissions due to interhospital transfers but will only impact trends if rates of interhospital transfers change over time. We therefore compared unlinked and linked admissions within our regional data. While our previous WA-based study demonstrated biases in STEMI and NSTEMI trends using unlinked versus linked data due to temporal changes in interhospital transfer rates, use of aggregated subgroups such as ACS reduced the variability, resulting in a 0.7%/year increase in the ratio of unlinked to linked admissions.¹⁵ There may be differences in rates of interhospital transfers between countries; however, the concordance between unlinked and linked regional trends indicates that unlinked data, particularly using aggregated subgroups, is likely reflective of true trends in each country.

Conclusion

In more recent years in England and Australia, the decline in rates of hospitalisation for ACS was greater than for chronic CHD, and the increasing proportion of chronic CHD hospital admissions may indicate a shift from acute to chronic morbidity. The greatest between-country variability in specific subgroups was in MI and other CHD; however, use of ACS and chronic CHD allowed better comparability of trends between populations. Reductions in CHD hospitalisations and mortality indicate that prevention and treatment approaches for CHD are

broadly effective in England and Australia. However, our study highlights the high proportion of chronic admissions, requiring better understanding of patient pathways and effectiveness of current treatment in this large patient group.

Acknowledgements We would like to acknowledge the staff at the WA Data Linkage Branch and the Data Custodian of the WA Department of Health Hospital Morbidity Data Collection for access to and provision of the linked data and staff at the Unit of Health-Care Epidemiology, Nuffield Department of Population Health, University of Oxford. We would also like to acknowledge the provision of national mortality and hospitalisation data by the Australian Institute of Health and Welfare.

Contributors LN and FLW conceived the study; LN, MG and RG carried out the data analysis; MJG, MH, DL and FMS provided input into methodology; MK and MG provided statistical advice; LN wrote the manuscript; all authors provided interpretation and critical revisions for the data and reviewed the manuscript.

Funding The work was supported by the National Health and Medical Research Council (NHMRC) of Australia (Grant number 572558) and a Research Collaboration Award from The University of Western Australia. LN is supported by an NHMRC Early Career Fellowship (1110337); RG is partly funded by Public Health England. The Big Data Institute has received funding from the Li Ka Shing and Robertson Foundations, the Medical Research Council, British Heart Foundation and is supported by the NIHR Oxford Biomedical Research Centre.

Competing interests None declared.

Patient consent for publication Not required.

Ethics approval Ethics approval was obtained from the Central and South Bristol Multi-Centre Research Ethics Committee (04/Q2006/176) for the English and ORLS record-linked data by the Unit of Health Care Epidemiology. Approval for use of the Western Australia data was obtained from the WA Department of Health and UWA Human Research Ethics Committees.

Provenance and peer review Not commissioned; externally peer reviewed.

Data sharing statement No additional data are available.

Open access This is an open access article distributed in accordance with the Creative Commons Attribution Non Commercial (CC BY-NC 4.0) license, which permits others to distribute, remix, adapt, build upon this work non-commercially, and license their derivative works on different terms, provided the original work is properly cited, appropriate credit is given, any changes made indicated, and the use is non-commercial. See: <http://creativecommons.org/licenses/by-nc/4.0/>.

Key messages

What is already known on this subject?

- ▶ Myocardial infarction (MI) event rates have declined in England during recent years, while in Australia, there has been a sustained attenuation of downward trends in MI since the introduction of the Universal Definition of MI in 2000.
- ▶ Most population-level studies of coronary heart disease (CHD) have focused on MI, but little is known of trends in acute and chronic presentations for CHD.

What might this study add?

- ▶ This study shows that the greatest variability in CHD subgroup trends, both within and between countries, is for MI and other CHD.
- ▶ There is greater consistency in CHD subgroup trends since 2004, with reductions in all subgroups in both countries, underpinned by greater reductions in acute coronary syndromes than chronic CHD.
- ▶ Chronic CHD presentations make up around half of all CHD hospitalisations, and the majority of these involve a coronary procedure.

How might this impact on clinical practice?

- ▶ Greater focus is needed on patients admitted to hospital for stable or chronic CHD including understanding the progression to hospitalisation and outcomes in these patients.

REFERENCES

- 1 GBD 2013 Mortality and Causes of Death Collaborators. Global, regional, and national age-sex specific all-cause and cause-specific mortality for 240 causes of death, 1990-2013: a systematic analysis for the Global Burden of Disease Study 2013. *Lancet* 2015;385:117-71.
- 2 Grey C, Jackson R, Wells S, *et al*. First and recurrent ischaemic heart disease events continue to decline in New Zealand, 2005-2015. *Heart* 2018;104:51-7.
- 3 Sarink D, Nedkoff L, Briffa T, *et al*. Trends in age- and sex-specific prevalence and incidence of cardiovascular disease in Western Australia. *Eur J Prev Cardiol* 2018;25:1280-90.
- 4 Freisinger E, Fuerstenberg T, Malyar NM, *et al*. German nationwide data on current trends and management of acute myocardial infarction: discrepancies between trials and real-life. *Eur Heart J* 2014;35:979-88.
- 5 Rosamond WD, Chambless LE, Heiss G, *et al*. Twenty-two-year trends in incidence of myocardial infarction, coronary heart disease mortality, and case fatality in 4 US communities, 1987-2008. *Circulation* 2012;125:1848-57.
- 6 Tunstall-Pedoe H, Kuulasmaa K, Mahönen M, *et al*. Contribution of trends in survival and coronar y-event rates to changes in coronary heart disease mortality: 10-year results from 37 WHO MONICA Project populations. *The Lancet* 1999;353:1547-57.
- 7 Australian Institute of Health and Welfare. *Trends in coronary heart disease mortality: age groups and populations In. Cardiovascular disease series no 38 Cat no CVD 67*. Canberra: AIHW, 2014.
- 8 Unal B, Critchley JA, Capewell S. Explaining the decline in coronary heart disease mortality in England and Wales between 1981 and 2000. *Circulation* 2004;109:1101-7.
- 9 Murray CJ, Richards MA, Newton JN, *et al*. UK health performance: findings of the Global Burden of Disease Study 2010. *Lancet* 2013;381:997-1020.
- 10 Smolina K, Wright FL, Rayner M, *et al*. Determinants of the decline in mortality from acute myocardial infarction in England between 2002 and 2010: linked national database study. *BMJ* 2012;344:d8059.
- 11 Australian Institute of Health and Welfare. *Monitoring acute coronary syndrome using national hospital data: an information paper on trends and issues In. Cat no CVD 57*. Canberra: AIHW, 2011.

- 12 Australian Bureau of Statistics. 3101.0 Australian Demographic Statistics. 2013 <http://www.abs.gov.au/AUSSTATS/abs@.nsf/Lookup/3101.0Main+Features1Dec%202013?OpenDocument>
- 13 Office for National Statistics. Annual mid-year population estimates, UK. 2013 <https://www.ons.gov.uk/peoplepopulationandcommunity/populationandmigration/populationestimates/bulletins/annualmidyearpopulationestimates/2014-06-26>.
- 14 Nedkoff L, Lopez D, Goldacre M, *et al.* Identification of myocardial infarction type from electronic hospital data in England and Australia: a comparative data linkage study. *BMJ Open* 2017;7:e019217–6.
- 15 Lopez D, Nedkoff L, Knuiman M, *et al.* Exploring the effects of transfers and readmissions on trends in population counts of hospital admissions for coronary heart disease: a Western Australian data linkage study. *BMJ Open* 2017;7:e019226.
- 16 Ko DT, Newman AM, Alter DA, *et al.* Secular trends in acute coronary syndrome hospitalization from 1994 to 2005. *Can J Cardiol* 2010;26:129–34.
- 17 Koopman C, Bots ML, van Dis I, *et al.* Shifts in the age distribution and from acute to chronic coronary heart disease hospitalizations. *Eur J Prev Cardiol* 2016;23:170–7.
- 18 Sulo G, Igland J, Vollset SE, *et al.* Trends in incident acute myocardial infarction in Norway: An updated analysis to 2014 using national data from the CVDNOR project. *Eur J Prev Cardiol* 2018;25:1031–9.
- 19 Sanfilippo FM, Hobbs MS, Knuiman MW, *et al.* Impact of new biomarkers of myocardial damage on trends in myocardial infarction hospital admission rates from population-based administrative data. *Am J Epidemiol* 2008;168:225–33.
- 20 Collinson P, Hammerer-Lercher A, Suvisaari J, *et al.* How Well Do Laboratories Adhere to Recommended Clinical Guidelines for the Management of Myocardial Infarction: The CARDiac Marker Guidelines Uptake in Europe Study (CARMAGUE). *Clin Chem* 2016;62:1264–71.
- 21 Pearson-Stuttard J, Bajekal M, Scholes S, *et al.* Recent UK trends in the unequal burden of coronary heart disease. *Heart* 2012;98:1573–82.
- 22 Britt H, Miller GC, Bayram C, *et al.* A decade of Australian general practice activity: 2006-07 to 2015-16. In: *General Practice Series Number 41*. Sydney: Sydney University Press 2016.
- 23 Fihn SD, Blankenship JC, Alexander K, *et al.* ACC/AHA/AATS/PCNA/SCAI/STS focused updated of the guideline for the diagnosis and management of patients with stable ischemic heart disease. *Circulation* 2014;2014:1749–67.
- 24 Hamon M, Lemesle G, Meurice T, *et al.* Elective coronary revascularization procedures in patients with stable coronary artery disease: incidence, determinants, and outcome (from the CORONOR Study). *J Am Coll Cardiol Intv* 2018;11:868–75.
- 25 Komajda M, Weidinger F, Kerneis M, *et al.* EURObservational research programme: the chronic ischaemic cardiovascular disease registry: Pilot phase (CICD-PILOT). *Eur Heart J* 2016;37:152–60.
- 26 Goldacre M, Yeates D, Gill L, *et al.* Coronary revascularisation in England 2009–2011. A geographical profile of hospital admissions. 2013 http://www.uhce.ox.ac.uk/Atlases/Linked/2009-2011/Operations/Coronary%20revascularisation_Final.pdf
- 27 Chew DP, MacIsaac AI, Lefkowitz J, *et al.* Variation in coronary angiography rates in Australia: correlations with socio-demographic, health service and disease burden indices. *Med J Aust* 2016;205:114–20.