

Editor

Roger J Hall

Deputy Editor

David Lefroy

Commissioning Editor

Peter Mills

Associate Editors

Adrian P Banning, Gary F Baxter, Martin Cowie, Filippo Crea, John L Gibbs, Bernard Jung, Andreas Mügge, Iain A Simpson

US Associate Editor

Catherine M Otto
(Washington)

JournalScan Editor

Iqbal S Malik

Statistical Advisor

Ian Ford

Managing Editor

Janet O'Flaherty

Technical Editor

John Weller

Editorial Assistants

Ian Betteridge
Hannah Schlesinger

International Advisory Board

Gianni de Angelini (UK)
Faust Attie (Mexico)
Philip E G Aylward (Australia)
George A Beller (USA)
Martin R Bennett (UK)
Nicholas A Boon (UK)
Roger M Boyle (UK)
Paulo G Camici (UK)
Terry Campbell (Australia)
Alfred Cheng (Singapore)
Stuart M Cobbe (UK)
Lawrence S Cohen (USA)
David C Crossman (UK)
Nicolas Danchin (France)
Henry J Dargie (UK)
Mark A de Belder (UK)
Pim J de Feyter (Netherlands)
Carlo di Mario (Italy)
Jean-Noel Fabiani (France)
Roberto Ferrari (Italy)
Peter J Fitzgerald (USA)
Keith A A Fox (UK)
D S Gambhir (India)
Clifford J Garratt (UK)
Marc H Gewillig (Belgium)
Sally Greaves (New Zealand)
Jorgen Fischer Hansen (Denmark)
Axel Haverich (Germany)
Otto M Hess (Switzerland)
Gerd Heusch (Germany)
Pierre Jais (France)
Jean Kachaner (France)
Sanjiv Kaul (USA)
Bruce Keogh (UK)
Robert A Kloner (USA)
Cornelius Kluyt (Netherlands)
Michael Komajda (France)
S Krishnaswami (India)
C C Lang (Malaysia)

Herve LeMarec (France)
Janet M McComb (UK)
Bernard Meier (Switzerland)
R Gordon Murray (UK)
Catherine M Otto (USA)
Dudley J Pennell (UK)
Shahbudin H Rahimtoolah (USA)
John Sanderson (Hong Kong)
Maurice E Sarano (USA)
Pinchas Sareli (South Africa)
James Scott (UK)
Ajay M Shah (UK)
Man Fai Shiu (UK)
Jordi Soler-Soler (Spain)
Giuseppe Specchia (Italy)
Martin St John Sutton (USA)
William G Stevenson (USA)
Kenneth M Taylor (UK)
Adam D Timmis (UK)
James D Thomas (USA)
Eric Topol (USA)
Dimitris Tousoulis (Greece)
Pavlos K Toutouzas (Greece)
Tom Treasure (UK)
Alec Vahanian (France)
Cees A Visser (Netherlands)
Ludwig K von Segesser (Switzerland)
Carole A Warnes (USA)
Hugh Watkins (UK)
Gary Webb (Canada)
Sylvan Lee Weinberg (USA)
Harvey D White (New Zealand)
Peter Wilde (UK)
Neil Wilson (UK)
Junichi Yoshikawa (Japan)
Editor: British Medical Journal
Editor Emeritus: Michael J Davies

Instructions to authors

Full instructions are available online at www.heartjnl.com/misc/ifora.shtml

If you do not have web access please contact the editorial office:
Heart

9 Fitzroy Square
London W1T 5HW, UK
Telephone +44 (0) 20 7383 4006
Fax +44 (0) 20 7388 0323
Email heartjournal@bmjgroup.com

Subscription information

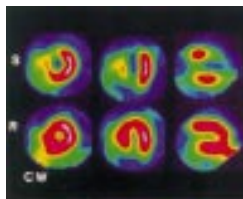
See page iv

Copyright

© 2002 Heart. All rights reserved; no part of this publication may be reproduced, stored in a retrieval system, or transmitted in any form or by any means, electronic, mechanical, photocopying, recording, or otherwise without the prior permission of Heart

Authors are required to grant Heart an exclusive licence to publish; further details available online at www.heartjnl.com/misc/ifora.shtml

- Heart is published by BMJ Publishing Group and printed in UK on acid free paper by Stephens and George Magazines Limited, Merthyr Tydfil
- Periodicals postage paid, Rahway, NJ. Postmaster: send address changes to: Heart, c/o Mercury Airfreight International Ltd Inc, 365 Blair Road, Avenel, NJ 07001, USA



See p 8

Editorials

- 1 Are angiotensin II receptor blockers indicated in chronic heart failure? *M Komajda*
- 3 Recognising "painless" heart attacks
C-K Wong, H D White
- 6 Current perspectives on curative catheter ablation of atrial fibrillation *D C Shah, M Haïssaguerre, P Jais*

Review

- 9 Cirrhotic cardiomyopathy: a pathophysiological review of circulatory dysfunction in liver disease *S Møller, J H Henriksen*

JournalScan

- 16 Cardiovascular highlights from non-cardiology journals

Cardiovascular medicine

- 17 Myocardial viability: impact on left ventricular dilatation after acute myocardial infarction
F Nijland, O Kamp, P M J Verhorst, W G de Voogt, H G Bosch, C A Visser
- 23 Longitudinal myocardial contraction improves early during titration with metoprolol CR/XL in patients with heart failure *B Andersson, B Grüner Sveälv, M Scharin Täng, R Mobini*
- 29 "Diastolic heart failure" or heart failure caused by subtle left ventricular systolic dysfunction?
M C Petrie, L Caruana, C Berry, J J V McMurray
- 32 Taking up regular drinking in middle age: effect on major coronary heart disease events and mortality *S G Wannamethee, A G Shaper*
- 37 Adenosine induced PR jump on surface ECG to differentiate atrioventricular nodal re-entrant tachycardia from concealed accessory pathway mediated tachycardia: a bedside test
S C Toal, B U Vajifdar, A K Gupta, A M Vora, Y Y Lokhandwala
- 41 Electrophysiological characteristics and outcome in patients with idiopathic right ventricular arrhythmia compared with arrhythmogenic right ventricular dysplasia
F Niroomand, C Carbucicchio, C Tondo, S Riva, G Fassini, A Apostolo, N Trevisi, P Della Bella
- 48 Hypercholesterolaemia and lipid lowering treatment do not affect the acute endogenous fibrinolytic capacity in vivo *D E Newby, F N Witherow, R A Wright, P Bloomfield, C A Ludlam, N A Boon, K A A Fox, D J Webb*
- 54 Post-stenotic coronary blood flow at rest is not altered by therapeutic doses of the oral antidiabetic drug glibenclamide in patients with coronary artery disease *T Reffelmann, H G Klues, P Hanrath, E R Schwarz*

Interventional cardiology and surgery

- 61 Type II diabetes does not prevent the recruitment of collateral vessels and the normal reduction of myocardial ischaemia on repeated balloon inflations during angioplasty *Z S Kyriakides, S Psychari, N Chrysomallis, M Georgiadis, E Sbarouni, D T Kremastinos*

Congenital heart disease

- 67 Prenatal diagnosis of coarctation of the aorta improves survival and reduces morbidity *O Franklin, M Burch, N Manning, K Sleeman, S Gould, N Archer*

Basic research

- 70 Platelet membrane glycoprotein Iba gene -5T/C Kozak sequence polymorphism as an independent risk factor for the occurrence of coronary thrombosis *H Douglas, K Michaelides, D A Gorog, E Durante-Mangoni, N Ahmed, G J Davies, E G D Tuddenham*

Scientific letters

- 75 Angiotensin converting enzyme inhibition and hospitalisation rates for heart failure in the Netherlands, 1980 to 1999: the end of an epidemic? *A Mosterd, J B Reitsma, D E Grobbee*
- 77 Repetitive myocardial stunning in pigs is associated with an increased formation of reactive nitrogen species *C S R Baker, M T Frost, O Rimoldi, K Moore, B Halliwell, J M Polak, P G Camici, R J C Hall*

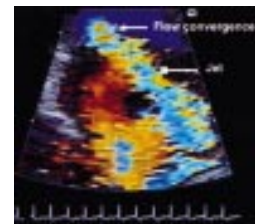
Education in Heart

- 79 Timing of mitral valve surgery *M Enriquez-Sarano*
- 86 Carotid artery surgery for people with existing coronary artery disease *I Lane, J Byrne*
- 91 Anaesthesia and the cardiac patient: the patient versus the procedure *J B Froehlich, K A Eagle*

Miscellanea

- 5 Stamps in cardiology: Cardiac risk factors *M K Davies A Hollman*

- 8 Images in cardiology: Mechanism of transient exercise induced ST segment elevation in non-Q wave lead: a scintigraphic co-relation *R Krishnamani, A M Salmasi, A Lahiri*
- 15 Images in cardiology: Ablation of haemodynamically unstable right ventricular outflow tract ventricular tachycardia guided by non-contact mapping *J W H Fung, H C K Chan, J E Sanderson*
- 22 Images in cardiology: Erdheim-Gsell cystic medial necrosis as a cause of giant aneurysm of the ascending aorta *H Burri, S Diebold-Berger, D Didier*
- 28 Images in cardiology: Transthoracic Doppler flow images detect cardiac angiosarcoma earlier than other imaging modalities *K Komamura, K Miyatake*
- 60 Images in cardiology: Localised cardiac tamponade caused by intrapericardial haematoma: a rare cause of ascites presenting 10 years after open heart surgery *N D Palmer, J Curtis, E A Rodrigues*
- 60 Images in cardiology: Transcatheter closure of coronary artery to pulmonary artery fistula using covered stents *A S Mulasari, C V Umesan, K Jagadeesh Kumar*
- 66 Images in cardiology: Asymptomatic aortic dissection in Marfan syndrome *T Wong, P J Kilner, M A Gatzoulis*
- 78 Web Top 10



See p 79