

Editor

Roger J Hall

Commissioning Editor

Iain Simpson

Associate Editors

Adrian P Banning, Gary F Baxter, Martin Cowie, Filippo Crea,
John L Gibbs, Bernard Jung, Andreas Mügge

US Associate Editor

Catherine M Otto
(Washington)

JournalScan Editor

Iqbal S Malik

Statistical Advisor

Ian Ford

Deputy Editor

David Lefroy

Series Editor, Education in Heart

Peter Mills

Managing Editor

Janet O'Flaherty

Technical Editor

John Weller

Editorial Assistants

Ian Betteridge
Stephanie Watkins

International Advisory Board

Gianni de Angelini (UK)
Fause Attie (Mexico)
Philip E G Aylward (Australia)
George A Beller (USA)
Martin R Bennett (UK)
Nicholas A Boon (UK)
Roger M Boyle (UK)
Paulo G Camici (UK)
Terry Campbell (Australia)
Alfred Cheng (Singapore)
Stuart M Cobbe (UK)
Lawrence S Cohen (USA)
David C Crossman (UK)
Nicolas Danchin (France)
Henry J Dargie (UK)
Mark A de Belder (UK)
Pim J de Feyter (Netherlands)
Carlo di Mario (Italy)
Jean-Noel Fabiani (France)
Roberto Ferrari (Italy)
Peter J Fitzgerald (USA)
Keith A A Fox (UK)
D S Gambhir (India)
Clifford J Garratt (UK)
Marc H Gewillig (Belgium)
Sally Greaves (New Zealand)
Jorgen Fischer Hansen
(Denmark)
Axel Haverich (Germany)
Otto M Hess (Switzerland)
Gerd Heusch (Germany)
Pierre Jaïs (France)
Jean Kachaner (France)
Sanjiv Kaul (USA)
Bruce Keogh (UK)
Robert A Kloner (USA)
Cornelius Klufft (Netherlands)
Michael Komajda (France)
S Krishnaswami (India)

C C Lang (Malaysia)
Herve LeMarec (France)
Janet M McComb (UK)
Bernard Meier (Switzerland)
R Gordon Murray (UK)
Catherine M Otto (USA)
Dudley J Pennell (UK)
Shabbudin H Rahimtoolah
(USA)
John Sanderson (Hong Kong)
Maurice E Sarano (USA)
Pinchas Sareli (South Africa)
James Scott (UK)
Ajay M Shah (UK)
Man Fai Shiu (UK)
Jordi Soler-Soler (Spain)
Giuseppe Specchia (Italy)
Martin St John Sutton (USA)
William G Stevenson (USA)
Kenneth M Taylor (UK)
Adam D Timmis (UK)
James D Thomas (USA)
Eric Topol (USA)
Dimitris Tousoulis (Greece)
Pavlos K Toutouzas (Greece)
Alec Vahanian (France)
Cees A Visser (Netherlands)
Ludwig K von Segesser
(Switzerland)
Carole A Warnes (USA)
Hugh Watkins (UK)
Gary Webb (Canada)
Sylvan Lee Weinberg (USA)
Harvey D White (New
Zealand)
Peter Wilde (UK)
Neil Wilson (UK)
Junichi Yoshikawa (Japan)
Editor: *British Medical
Journal*
Editor Emeritus: Michael J
Davies

Instructions to authors

Full instructions are available online at [www.heartjnl.com/
misc/ifora.shtml](http://www.heartjnl.com/misc/ifora.shtml)

If you do not have web access please contact the editorial office:
Heart

9 Fitzroy Square
London W1T 5HW, UK
Telephone +44 (0) 20 7383 4006
Fax +44 (0) 20 7388 0323
Email heartjournal@bmjgroup.com

Subscription information

See page ii

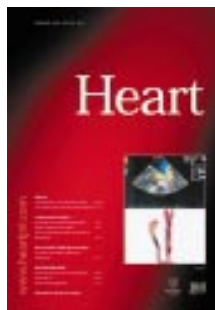
Copyright

© 2003 BMJ Publishing Group and British Cardiac Society. All rights reserved; no part of this publication may be reproduced, stored in a retrieval system, or transmitted in any form or by any means, electronic, mechanical, photocopying, recording, or otherwise without prior permission

Authors are required to grant *Heart* an exclusive licence to publish; further details available online at [www.heartjnl.com/
misc/ifora.shtml](http://www.heartjnl.com/misc/ifora.shtml)

• *Heart* is published by BMJ Publishing Group and printed in UK on acid free paper by Stephens and George Magazines Limited, Merthyr Tydfil

• Periodicals postage paid, Rahway, NJ. Postmaster: send address changes to: *Heart*, c/o Mercury Airfreight International Ltd, 365 Blair Road, Avenel, NJ 07001, USA



See p 41



www.publicationethics.org.uk

This journal is a member of and subscribes to the principles of the Committee on Publication Ethics

Editorials

- 1 Risk assessment in coronary artery surgery
J R Pepper
- 3 Coarctation of the aorta in adults: do we need surgeons?
M J Mullen

Viewpoint

- 6 Dissection of the aorta: a new approach
M Mikich

Commentary

- 9 Assessment of myocardial viability: using coronary pressure and flow after acute myocardial infarction
M J Kern

Featured case report

- 11 Histopathology of coronary in-stent restenosis following γ brachytherapy
H C Lowe, M Mino, E J Mark, B D Mac Neill, I F Palacios, S L Houser

Review

- 14 Therapeutic inhibition of tumour necrosis factor α in patients with heart failure: cooling an inflamed heart
P A Henriksen, D E Newby

Cardiovascular medicine

- 19 Coronary risk factors predicting early and late coronary deaths
A Menotti, M Lanti
- 25 Factors associated with survival to hospital discharge among patients hospitalised alive after out of hospital cardiac arrest: change in outcome over 20 years in the community of Göteborg, Sweden
J Herlitz, A Bang, J Gunnarsson, J Engdahl, B W Karlson, J Lindqvist, L Waagstein
- 31 Effect of diabetes on serum potassium concentrations in acute coronary syndromes
K Foo, N Sekhri, A Deaner, C Knight, A Suliman, K Ranjadayan, A D Timmis
- 36 Cumulative risk assessment in unstable angina: clinical, electrocardiographic, autonomic, and biochemical markers
S Kennon, C P Price, P G Mills, P K MacCallum, J Cooper, J Hooper, H Clarke, A D Timmis
- 42 Mode of death in heart failure: findings from the ATLAS trial
P A Poole-Wilson, B F Uretsky, K Thygesen, J G F Cleland, B M Massie, L Rydén, on behalf of the ATLAS study group
- 49 Heart failure and the aging population: an increasing burden in the 21st century?
S Stewart, K MacIntyre, S Capewell, J J V McMurray
- 54 High prevalence of left ventricular systolic and diastolic asynchrony in patients with congestive heart failure and normal QRS duration
C-M Yu, H Lin, Q Zhang, J E Sanderson
- 61 Effects of glucose-insulin-potassium infusion on chronic ischaemic left ventricular dysfunction
V K Khoury, B Haluska, J Prins, T H Marwick

- 66 Catecholaminergic polymorphic ventricular tachycardia: electrocardiographic characteristics and optimal therapeutic strategies to prevent sudden death *N Sumitomo, K Harada, M Nagashima, T Yasuda, Y Nakamura, Y Aragaki, A Saito, K Kurosaki, K Jouo, M Koujiro, S Konishi, S Matsuoka, T Oono, S Hayakawa, M Miura, H Ushinohama, T Shibata, I Niimura*

Interventional cardiology and surgery

- 71 Assessment of myocardial viability using coronary zero flow pressure after successful angioplasty in patients with acute anterior myocardial infarction *K Shimada, Y Sakanoue, Y Kobayashi, S Ehara, M Hirose, Y Nakamura, D Fukuda, H Yamagishi, M Yoshiyama, K Takeuchi, J Yoshikawa*
- 77 The adult patient with native coarctation of the aorta: balloon angioplasty or primary stenting? *C Zabal, F Attie, M Rosas, A Buendía-Hernández, J A García-Montes*
- 84 Mechanism of lumen enlargement with direct stenting versus predilatation stenting: influence of remodelling and plaque characteristics assessed by volumetric intracoronary ultrasound *G Finet, N J Weissman, G S Mintz, L F Satler, K M Kent, J R Laird, G A Adelman, A E Ajani, M T Castagna, G Rioufol, A D Pichard*

Congenital heart disease

- 91 Transoesophageal atrial pacing combined with transthoracic two dimensional echocardiography: experience in patients operated on with arterial switch operation for transposition of the great arteries *E De Caro, G P Ussia, M Marasini, G Pongiglione*

Scientific letters

- 96 Tumour necrosis factor α concentration and collateral flow in patients with coronary artery disease and normal systolic left ventricular function *C Seiler, T Pohl, M Billinger, B Meier*
- 98 The risk model of choice for coronary surgery in the UK *M Petrou, F Roques, L D Sharples, R Kinsman, B Keogh, F Carey, S A M Nashef*

Education in Heart

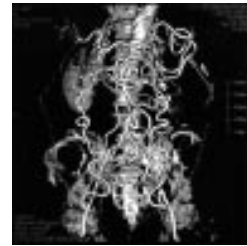
- 100 Timing of surgery in mitral regurgitation *Catherine M Otto*
- 106 Pacing for atrial fibrillation *Chu-Pak Lau*
- 113 Stress echocardiography *Thomas H Marwick*

JournalScan

- 119 Cardiovascular highlights from non-cardiology journals

Electronic pages

- e1 Catheter ablation of sinoatrial re-entry tachycardia in a 2 month old infant *T Simmers, N Sreeram, F Wittkampf*
- e2 Sisters with atypical Fabry's disease with complete atrioventricular block *Y Doi, G Toda, K Yano*
- e3 Unruptured congenital aneurysm of the left sinus of Valsalva in an adult with complex left heart malformations *A Hakami, B Stiller, R Hetzer*
- e4 Coronary artery aneurysm with a fistulous connection to the right atrium mimicking a sinus of Valsalva aneurysm *V Shrivastava, E Akowuah, G J Cooper*



See p 76

Miscellanea

- 2 Stamps in cardiology: Heart research and ancient Greek medicine *T Tirilomis*
- 5 Images in cardiology: Aortic dissection extending to both carotid arteries *M Rotter, M Pavlicek, E Delacretaz*
- 10 Images in cardiology: Pituitary apoplexy following anticoagulation for acute coronary syndrome *D V Nagarajan, D Bird, M Papouchado*
- 18 Images in cardiology: A novel form of spontaneous coronary vasospasm: bead-like vasospasm in an elderly man *S Kurisu, I Inoue, T Kawagoe*
- 41 Images in cardiology: Pulmonary arteriovenous fistula *C R P de Castro, N M Ikari, F B Jatene*
- 48 Electronic pages
- 60 Images in cardiology: Fragile left atrial thrombus successfully treated with anticoagulants *C Ogata S Nakatani, M Yamagishi*
- 76 Images in cardiology: Complete occlusion of the abdominal aorta with a solitary kidney *M Shimoyama, Y Adachi, K Nakamura*
- 83 Images in cardiology: First human use of a new PFM "Babysystem" *M B E Schneider, G Fischer, P E Lange*
- 83 Electronic pages
- 95 Web Top 10
- 99 Images in cardiology: Imaging of a huge atrial myxoma *C L Dubois, P Herijgers*