

## Editor

Roger J Hall

## Commissioning Editor

Iain Simpson

## Associate Editors

Adrian P Banning, Eric Butchart, Filippo Crea, David Crossman,  
John L Gibbs, Bernard Jung, Andreas Mügge

## US Associate Editor

Catherine M Otto  
(Washington)

## JournalScan Editor

Iqbal S Malik

## Statistical Advisor

Ian Ford

## Deputy Editor

David Lefroy

## Series Editor, Education in Heart

Peter Mills

## Managing Editor

Janet O'Flaherty

## Technical Editor

John Weller

## Editorial Assistants

Andy Fosberry  
Stephanie Watkins

## International Advisory Board

Gianni de Angelini (UK)  
Fause Attie (Mexico)  
Philip E G Aylward (Australia)  
Gary Baxter (UK)  
George A Beller (USA)  
Martin R Bennett (UK)  
Nicholas A Boon (UK)  
Roger M Boyle (UK)  
Paulo G Camici (UK)  
Terry Campbell (Australia)  
Alfred Cheng (Singapore)  
Stuart M Cobbe (UK)  
Lawrence S Cohen (USA)  
Martin Cowie (UK)  
Nicolas Danchin (France)  
Henry J Dargie (UK)  
Christopher Davidson (UK)  
Mark A de Belder (UK)  
Pim J de Feyter (Netherlands)  
Carlo di Mario (UK)  
Jean-Noel Fabiani (France)  
Roberto Ferrari (Italy)  
Peter J Fitzgerald (USA)  
Keith A A Fox (UK)  
D S Gambhir (India)  
Clifford J Garratt (UK)  
Marc H Gewillig (Belgium)  
Sally Greaves (New Zealand)  
Jorgen Fischer Hansen  
(Denmark)  
Axel Haverich (Germany)  
Otto M Hess (Switzerland)  
Gerd Heusch (Germany)  
Pierre Jaïs (France)  
Jean Kachaner (France)  
Sanjiv Kaul (USA)  
Bruce Keogh (UK)  
Robert A Kloner (USA)  
Cornelius Kluyt (Netherlands)

Michael Komajda (France)  
S Krishnaswami (India)  
C C Lang (Malaysia)  
Herve LeMarec (France)  
Janet M McComb (UK)  
Bernard Meier (Switzerland)  
R Gordon Murray (UK)  
Dudley J Pennell (UK)  
Shahbudin H Rahimtoolah (USA)  
John Sanderson (Hong Kong)  
Maurice E Sarano (USA)  
Pinchas Sareli (South Africa)  
James Scott (UK)  
Ajay M Shah (UK)  
Richard Schilling (UK)  
Man Fai Shiu (UK)  
Jordi Soler-Soler (Spain)  
Giuseppe Specchia (Italy)  
Martin St John Sutton (USA)  
William G Stevenson (USA)  
Kenneth M Taylor (UK)  
Adam D Timmis (UK)  
James D Thomas (USA)  
Eric Topol (USA)  
Dimitris Tousoulis (Greece)  
Pavlos K Toutouzas (Greece)  
Alec Vahanian (France)  
Cees A Visser (Netherlands)  
Ludwig K von Segesser  
(Switzerland)  
Carole A Warnes (USA)  
Hugh Watkins (UK)  
Gary Webb (Canada)  
Sylvan Lee Weinberg (USA)  
Harvey D White (New Zealand)  
Neil Wilson (UK)  
Junichi Yoshikawa (Japan)  
Editor: *British Medical  
Journal*

## Instructions to authors

Full instructions are available online at [www.heartjnl.com/misc/ifora.shtml](http://www.heartjnl.com/misc/ifora.shtml)

If you do not have web access please contact the editorial office:  
Heart

9 Fitzroy Square

London W1T 5HW, UK

Telephone +44 (0) 20 7383 4006

Fax +44 (0) 20 7388 0323

Email [heartjournal@bmjgroup.com](mailto:heartjournal@bmjgroup.com)

## Subscription information

See inside back cover

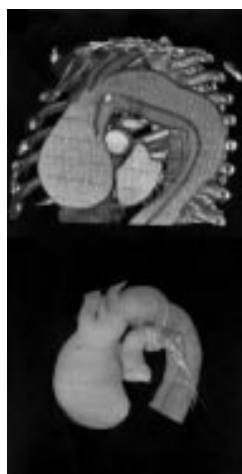
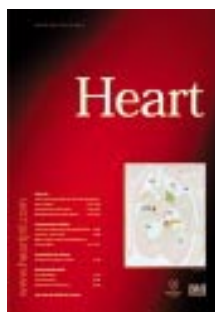
## Copyright

© 2003 BMJ Publishing Group and British Cardiac Society. All rights reserved; no part of this publication may be reproduced, stored in a retrieval system, or transmitted in any form or by any means, electronic, mechanical, photocopying, recording, or otherwise without prior permission

Authors are required to grant *Heart* an exclusive licence to publish; further details available online at [www.heartjnl.com/misc/ifora.shtml](http://www.heartjnl.com/misc/ifora.shtml)

• *Heart* is published by BMJ Publishing Group and printed in UK on acid free paper by Stephens and George Magazines Limited, Merthyr Tydfil

• Periodicals postage paid, Rahway, NJ. Postmaster: send address changes to: *Heart*, c/o Mercury Airfreight International Ltd, 365 Blair Road, Avenel, NJ 07001, USA



See p 838



[www.publicationethics.org.uk](http://www.publicationethics.org.uk)

This journal is a member of and subscribes to the principles of the Committee on Publication Ethics

## Editorials

- 817 Are there sex differences in risk factors for coronary heart disease? Maternal versus paternal transmission *R F Redberg*
- 819 Fabry disease *S F Nagueh*
- 821 The putative role of isoprostanes in human cardiovascular physiology and disease: following the fingerprints *J-L Cracowski*
- 823 Endovascular treatment of thoracic aortic disease *R E Bell, J F Reidy*
- 825 Open surgery for thoracic aortic disease *H J Safi, P R Taylor*
- 827 How many cath labs do we need? *D Hackett, for the British Cardiac Society Guidelines and Medical Practice Committee*

## Review

- 830 Enhanced external counterpulsation for refractory angina pectoris *R M Sinval, R M Gowda, I A Khan*

## Cardiovascular medicine

- 834 Is maternal transmission of coronary heart disease risk stronger than paternal transmission? *S Kinra, G Davey Smith, M Okasha, P McCarron, J McEwen*
- 839 Presentation, management, and outcome of out of hospital cardiopulmonary arrest: comparison by underlying aetiology *J P Pell, J M Sirel, A K Marsden, I Ford, N L Walker, S M Cobbe*
- 843 A prospective study of long term prognosis in young myocardial infarction survivors: the prognostic value of angiography and exercise testing *A A Awad-Elkarim, J P Bagger, C J Albers, J S Skinner, P C Adams, R J C Hall*
- 848 The current cost of angina pectoris to the National Health Service in the UK *S Stewart, N Murphy, A Walker, A McGuire, J J V McMurray*
- 854 Acetylcholinesterase inhibition with pyridostigmine improves heart rate recovery after maximal exercise in patients with chronic heart failure *A S Androne, K Hryniewicz, R Goldsmith, A Arwady, S D Katz*
- 859 Colour tissue velocity imaging can show resynchronisation of longitudinal left ventricular contraction pattern by biventricular pacing in patients with severe heart failure *P Schuster, S Faerstrand, O-J Ohm*
- 865 Trends and ethnic differences in hospital admissions and mortality for congestive heart failure in the elderly in Singapore, 1991 to 1998 *T P Ng, M Niti*
- 871 Increased urinary 15-F<sub>2t</sub>-isoprostane concentrations in patients with non-ischaemic congestive heart failure: a marker of oxidative stress *M Nonaka-Sarukawa, K Yamamoto, H Aoki, H Takano, T Katsuki, U Ikeda, K Shimada*

- 875 Normal values of B type natriuretic peptide in infants, children, and adolescents *A Koch, H Singer*
- 879 N-terminal pro B type natriuretic peptide, but not the new putative cardiac hormone relaxin, predicts prognosis in patients with chronic heart failure *C Fisher, C Berry, L Blue, J J Morton, J McMurray*
- 882 QT dispersion and left ventricular morphology in patients with hypertrophic cardiomyopathy *K Sakata, M Shimizu, H Ino, M Yamaguchi, H Terai, K Hayashi, M Kiyama, T Hayashi, M Inoue, H Mabuchi*
- 887 Long term effects of nisoldipine on the progression of coronary atherosclerosis and the occurrence of clinical events: the NICOLE study *J A Dens, W J Desmet, P Coussement, I K De Scheerder, K Kostopoulos, P Kerdsinchai, C Supanantaroeck, J H Piessens*
- 893 Long term statin treatment reduces lipoprotein(a) concentrations in heterozygous familial hypercholesterolaemia *S van Wissen, T J Smilde, M D Trip, Th de Boo, J J P Kastelein, A F H Stalenhoef*

**Interventional cardiology and surgery**

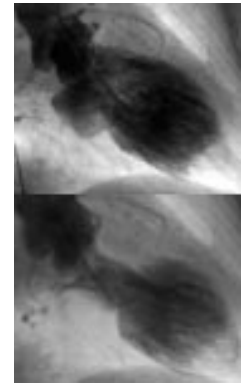
- 897 Neuroprotection during cardiac surgery: a randomised trial of a platelet activating factor antagonist *D P Taggart, S M Browne, D T Wade, P W Halligan*
- 901 Risk factors for pacemaker implantation following aortic valve replacement: a single centre experience *G Limongelli, V Ducceschi, A D'Andrea, A Renzulli, B Sarubbi, M De Feo, F Cerasuolo, R Calabrò, M Cotrufo*

**Congenital heart disease**

- 905 The efficacy and safety of stent redilatation in congenital heart disease *C Duke, E Rosenthal, S A Qureshi*
- 913 Review of diagnosis, treatment, and outcome of fetal atrial flutter compared with supraventricular tachycardia *M Krapp, T Kohl, J M Simpson, G K Sharland, A Katalinic, U Gembruch*
- 918 Transcatheter closure of perimembranous ventricular septal defects with the Amplatzer asymmetric ventricular septal defect occluder: preliminary experience in children *B D Thanopoulos, G S Tsaousis, E Karanasios, N G Eleftherakis, C Paphitis*

**Basic research**

- 923 Real time quantification of low temperature radiofrequency ablation lesion size using phased array intracardiac echocardiography in the canine model: comparison of two dimensional images with pathological lesion characteristics *A Doi, M Takagi, I Toda, M Teragaki, M Yoshiyama, K Takeuchi, J Yoshikawa*



See p 927

**Scientific letters**

- 928 Acute aortic syndrome: proposal for a novel classification *B van der Loo, R Jenni*
- 929 Fabry disease: a mimic for obstructive hypertrophic cardiomyopathy? *S R Ommen, R A Nishimura, W D Edwards*
- 931 CD14 promoter polymorphism is associated with acute myocardial infarction resulting from insignificant coronary artery stenosis *T Kondo, M Ohno, K Shimokata, S Iino, Y Inden, T Murohara, M Hirai*
- 933 Excessive pulmonary autograft dilatation causes important aortic regurgitation *R B Hokken, J J M Takkenberg, L A van Herwerden, J R T C Roelandt, A J J C Bogers*
- 935 Increased platelet sodium–hydrogen exchanger activity in patients with variant angina *G A Lanza, E De Candia, E Romagnoli, L Messano, A Sestito, R Landolfi, F Crea, A Maseri*
- 937 Prevalence of haemoptysis in adults with pulmonary atresia and ventricular septal defect, and the role of mammary artery collateral vessels *K Greaves, P Bye, G Parker, D S Celermajer*

**Education in Heart**

- 939 Atrial fibrillation: classification, pathophysiology, mechanisms and drug treatment *V Markides, R J Schilling*
- 944 Carotid artery stenting *F Liistro, C Di Mario*
- 949 Development of the heart: (2) Septation of the atriums and ventricles *R H Anderson, S Webb, N A Brown, W Lamers, A Moorman*

**JournalScan**

- 859 Cardiovascular highlights from non-cardiology journals

**Electronic pages**

- e21 Isolated left ventricular non-compaction: cardiomyopathy with homogeneous transmural and heterogeneous segmental perfusion *A C Borges, D Kivelitz, G Baumann*

e22	Acquired right coronary artery fistula draining to the right ventricle: angiographic documentation of first appearance following reperfusion after acute myocardial infarction, with subsequent spontaneous closure <i>P Schanzenbächer, J Bauersachs</i>	838	Images in cardiology: Electrocardiographic gated multislice computed tomography of the thoracic aorta <i>G J Morgan-Hughes, C A Roobottom, A J Marshal</i>
e23	Anomalous origin of the circumflex artery and patent foramen ovale: a rare cause of myocardial ischaemia after percutaneous closure of the defect <i>G Casolo, G F Gensini, G Santoro, L Rega</i>	847	Electronic pages
	.....	858	Images in cardiology: Thinned myocardial fibrosis with thrombus in the dilated form of hypertrophic cardiomyopathy demonstrated by multislice computed tomography <i>N Funabashi, K Yoshida, I Komuro</i>
	<b>Miscellanea</b>	870	Images in cardiology: Cardiogenic shock in a young woman revealing juvenile haemochromatosis <i>E Durand, J M Grinda, P Bruneval</i>
818	Images in cardiology: Patency of multiple coronary artery bypass grafts demonstrated by multislice CT <i>N Funabashi, K Teramoto, I Komuro</i>	886	Images in cardiology: Iatrogenic left coronary artery dissection <i>W J Hobbs, A Chauhan, D Roberts</i>
822	Images in cardiology: Myocardial bridge-like arterial graft compression by draining tube <i>E Sbarouni, Z S Kyriakides, D Th Kremastinos</i>	927	Images in cardiology: Apical thrombus associated with left ventricular apical ballooning <i>C F Barrera-Ramirez, J M Jimenez-Mazuecos, F Alfonso</i>
829	Images in cardiology: Ventricular tachycardia following head injury <i>S S Khogali, J N Townsend, H Marshal</i>	930	Images in cardiology: Improved myocardial viability following intramyocardial autologous bone marrow injection after acute myocardial infarction <i>G Beran, D Glogar, I M Lang</i>
833	Electronic pages	938	Web Top 10