

# The changing face of infective endocarditis

B D Prendergast



Infective endocarditis (IE) is an evolving disease with a persistently high mortality and morbidity, even in the modern era of advanced diagnostic imaging, improved antimicrobial chemotherapy, and potentially curative surgery. Despite these improvements in health care, the incidence of the disease has remained unchanged over the past two decades and may even be increasing. Chronic rheumatic heart disease is now an uncommon antecedent, whereas degenerative valve disease of the elderly, mitral valve prolapse, intravenous drug misuse, preceding valve replacement, and vascular instrumentation have become increasingly common, coinciding with an increase in staphylococcal infections and those caused by fastidious organisms. The current understanding of this difficult condition is reviewed and recent developments in medical and surgical management are updated.

Come and look, Madame Mahler. Even I have not seen streptococci in such a marvelous state of development. Just like seaweed.—*Gustav Mahler's bacteriologist, Paris, 1911*

Almost 100 years since the death of the great Bohemian symphonic composer from complications of the disease, infective endocarditis (IE) continues to surprise, frustrate, and perplex. Even in the modern era of advanced diagnostic imaging, improved antimicrobial chemotherapy, and potentially curative surgery, IE remains an evolving disease with a persistently high mortality and morbidity. Despite these improvements in health care, the incidence of the disease has remained unchanged over the past two decades at approximately 1.7–6.2 cases/100 000 patient years and may even be increasing.<sup>1</sup> Almost all aspects of the disease, including its natural history, predisposing factors, sequelae, and causative organisms, are virtually unrecognisable compared with Osler's original descriptions from the 19th century. In particular, chronic rheumatic heart disease is now an uncommon antecedent, whereas degenerative valve disease of the elderly, mitral valve prolapse, intravenous drug misuse, preceding valve replacement, and vascular instrumentation have become increasingly common, coinciding with an increase in staphylococcal infections and those caused by fastidious organisms. Furthermore, previously undetected pathogens are now being identified with the disease and multidrug resistant bacteria

Heart 2006;92:879–885. doi: 10.1136/hrt.2005.067256

challenge conventional treatment regimens. This short article provides a concise review of current understanding of this difficult condition and an update of recent developments in medical and surgical management.

## EPIDEMIOLOGY

A recent review of contemporary case series encompassing a total of 3784 episodes of IE between 1993 and 2003 found a median incidence of 3.6/100 000 population/year with a progressive increase in relation to age.<sup>2</sup> The male to female ratio was 2:1 and median in-hospital mortality rate 16% (range 11–26%). Staphylococci and streptococci accounted for the majority of cases and notable trends included a rising prevalence of staphylococcal skin flora caused by iatrogenic nosocomial infection, *Staphylococcus aureus* affecting intravenous drug users, and *Streptococcus bovis* (mainly *Streptococcus gallolyticus*) in the elderly, often connected to underlying gastrointestinal neoplasia. These findings, particularly the increasing problem of IE affecting the elderly population, have been confirmed in other recent European series.<sup>3–5</sup>

## Nosocomial infection

Nosocomial infection accounted for endocarditis in 22% of one recent series with a mortality greater than 50%.<sup>6</sup> Predominant pathogens were staphylococci and enterococci, often related to intravenous catheters or surgical procedures, and fewer than 50% of patients had underlying structural heart disease. Particular risk groups in this category include the immunosuppressed with central venous catheters and those undergoing haemodialysis.

## Intravenous drug users

Intravenous drug users predominate in series of young people and overall incidence of IE in this group is 1–5%/year.<sup>7</sup> The tricuspid valve is infected in over 50% of patients and the majority have no known pre-existing cardiac disease. Repeated injections of impure material could, however, encourage cytokine production, valvar inflammation, and fibronectin deposition on previously healthy valve tissue, thereby predisposing to infection. *S aureus* species predominate, although unusual infections including *Pseudomonas aeruginosa*, fungi, bartonella, salmonella, and listeria may also be encountered,

**Abbreviations:** ELISA, enzyme linked immunosorbent assay; HACEK, *Haemophilus* species, *Actinobacillus actinomycetemcomitans*, *Cardiobacterium hominis*, *Eikenella corrodens*, and *Kingella kingae*; ICE, International Collaboration on Endocarditis; IE, infective endocarditis; PCR, polymerase chain reaction

Correspondence to:  
Dr Bernard D Prendergast,  
North-West Regional  
Cardiothoracic Centre,  
Wythenshawe Hospital,  
Southmoor Road,  
Manchester M23 9LT, UK;  
bernard.prendergast@  
smuht.nwest.nhs.uk

Accepted 14 August 2005  
Published Online First  
10 October 2005

particularly in those who are HIV positive, where outcome is inversely related to CD4 count.<sup>8</sup>

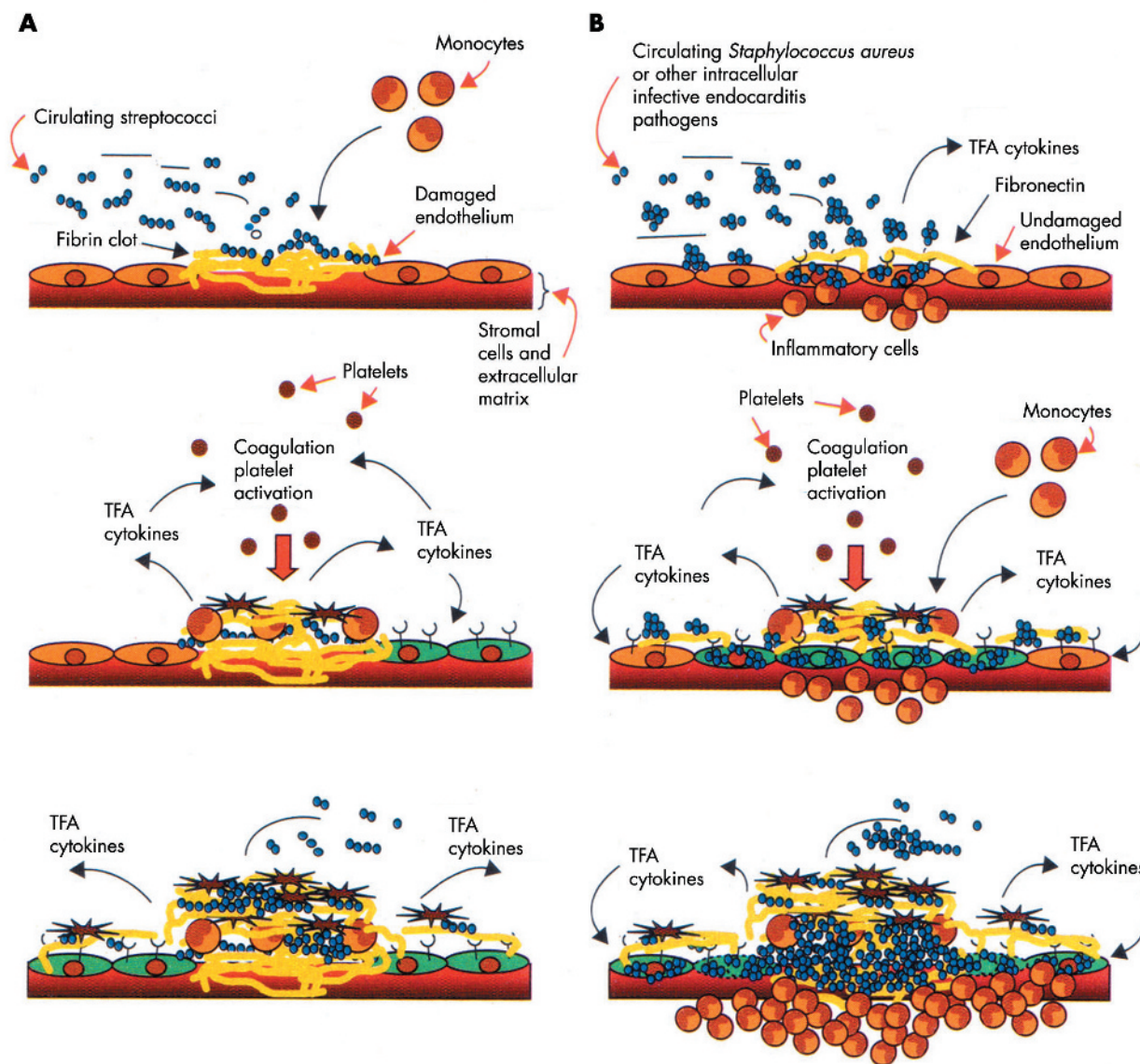
### Prosthetic valve endocarditis

Prosthetic valve endocarditis accounts for 10–15% of most series with an overall incidence of 0.1–2.3%/patient year.<sup>9</sup> Cases may be classified as early or late depending on whether infection arises within one year of surgery or later, and both mechanical valves and bioprostheses appear equally susceptible. Early infection peaks two months after surgery and is often caused by *Staphylococcus epidermidis* or *S aureus*, whereas the spectrum of late infection mirrors that of native valve disease.

### PATHOPHYSIOLOGY

A detailed discussion of the clinical features of IE is beyond the scope of this article and is covered elsewhere.<sup>1</sup> Both acute and insidious presentations are common and classical clinical signs are often absent. Thus, a low index of clinical suspicion and early investigation of those at risk are decisive.

Recent advances in our understanding of the underlying pathophysiology, particularly in staphylococcal and streptococcal infection, provide insight into mechanisms of disease progression and offer the prospect of improved management and directed treatment. At the cellular level, mechanical and inflammatory lesions promote microbial adherence to injured endothelium during transient bacteraemia (fig 1). Parallel



**Figure 1** Early steps in bacterial valve colonisation. (A) Colonisation of damaged epithelium: exposed stromal cells and extracellular matrix proteins trigger deposition of fibrin-platelet clots to which streptococci bind (upper panel); fibrin adherent streptococci attract monocytes and induce them to produce tissue factor activity (TFA) and cytokines (middle panel); these mediators activate coagulation cascades, attract and activate blood platelets, and induce cytokine, integrin, and TFA production from neighbouring endothelial cells (lower panel), encouraging vegetation growth. (B) Colonisation of inflamed valve tissues: in response to local inflammation, endothelial cells express integrins that bind plasma fibronectin, to which microorganisms adhere by wall attached fibronectin binding proteins, resulting in endothelial internalisation of bacteria (upper panel); in response to invasion, endothelial cells produce TFA and cytokines, triggering blood clotting and extension of inflammation, and promoting formation of the vegetation (middle panel); internalised bacteria eventually lyse endothelial cells by secreting membrane active proteins such as haemolysins (lower panel). Reproduced from Moreillon and Que<sup>2</sup> with permission.

inflammation induced expression of  $\beta 1$  integrins by endothelial cells facilitates adhesion of pathogens that carry fibronectin binding proteins on their surface (for example, *S aureus*), thus providing a mechanism for the development of IE in patients without pre-existent valve disease. Endothelial disruption also permits contact of blood with subendothelial factors (extracellular matrix proteins, thromboplastin, and tissue factors) that promote coagulation. Pathogens associated with IE bind avidly to the resultant coagulum, initiating a cycle of monocyte activation and cytokine and tissue factor production, resulting in progressive enlargement of an infected vegetation. Subsequently, local extension and tissue damage may result in abscess formation and, ultimately, septic emboli may disseminate to remote organs, notably the brain, spleen, and kidney, with corresponding resultant clinical sequelae.

**DIAGNOSIS**

**Blood cultures**

Positive blood cultures remain the cornerstone of diagnosis and provide live bacteria for susceptibility testing. The first two sets of cultures are positive in more than 90% of cases. The need for sampling *before* antibiotic administration is self evident, though surveys of contemporary practice show consistent failure in this respect.<sup>3</sup> <sup>10</sup> Although IE caused by anaerobes is uncommon, cultures should be incubated in both aerobic and anaerobic atmospheres to detect organisms such as *Bacteroides* or *Clostridium* species. If the patient has a history of antibiotic treatment, diagnostic yield is increased by use of sodium polyanetholsulphonate or a dedicated adsorbent resin, both of which inactivate antimicrobial effects. When cultures remain negative at five days, subculture on to chocolate agar plates may allow identification of an atypical organism. Prolonged culture is associated with rising likelihood of contamination, however, and alternative techniques (or an alternative diagnosis) should be considered at this stage.

**Culture negative IE and atypical organisms**

Blood cultures are negative in 2.5–31% of all cases of IE, often delaying diagnosis and the onset of treatment with a profound impact on clinical outcome. Negative cultures arise most commonly as a consequence of prior antibiotic administration, but an increasingly common scenario is infection by fastidious organisms with limited proliferation under conventional culture conditions or requiring specialised tools for identification.<sup>11</sup> Such pathogens include *Coxiella*, *Legionella*, the HACEK group (*Haemophilus* species, *Actinobacillus actinomycetemcomitans*, *Cardiobacterium hominis*, *Eikenella corrodens*, and *Kingella kingae*), *Chlamydia*, *Bartonella*,

*Tropheryma whipplei*, and fungi, including *Candida*, *Histoplasma*, and *Aspergillus* species, and *Torulopsis glabrata*. These organisms may be particularly common in IE affecting patients with prosthetic valves, indwelling venous lines, pacemakers, renal failure, and immunocompromised states. Table 1 summarises diagnostic techniques and treatment regimens in these difficult scenarios.

**Echocardiography**

Transthoracic and transoesophageal echocardiography are now ubiquitous and their utility in diagnosis and management of IE is clearly recognised.<sup>12</sup> Transoesophageal imaging has superior sensitivity and specificity, is cost effective, and is recommended when clinical suspicion is high and a transthoracic study is negative, in all cases of prosthetic valve endocarditis, and when complications are suspected or likely, particularly before surgery. The utility of both modes of investigation is diminished when they are applied indiscriminately, however, and appropriate application in the context of simple clinical criteria improves diagnostic yield.<sup>13</sup>

Advances in imaging technology have had a minimal impact at the day to day clinical level. The use of harmonic imaging has improved study quality without altering sensitivity in the detection of vegetations, whereas the roles of three dimensional echocardiography and other alternative modes of imaging (computed tomography, magnetic resonance imaging, and technetium scintigraphy) have yet to be formally evaluated.

**Diagnostic criteria and their limitations**

The original von Reyn diagnostic criteria, based on clinical and microbiological features, have now been surpassed by the Duke criteria, which emphasise the role of echocardiography.<sup>14</sup> <sup>15</sup> Many studies have now shown the superiority of the Duke criteria and a scientific statement of the American Heart Association has concluded that these criteria should be adopted as the primary diagnostic schema when IE is suspected.<sup>16</sup> Nevertheless, clear deficiencies remain and sensitivity is diminished in patients whose blood cultures are negative, those with infection affecting a prosthetic valve or pacemaker lead, and those with IE affecting the right heart (particularly drug misusing patients).<sup>17</sup>

**Modified Duke criteria and new diagnostic techniques**

In 1997, Lamas and Eykyn proposed a number of clinical amendments to the Duke criteria (“the St Thomas modifications”).<sup>18</sup> Simultaneously, recognition of the role of Q fever—a worldwide zoonosis caused by *Coxiella burnetti* and a particularly frequent cause of IE in France—increasing

**Table 1** Investigation and management of rare causes of culture negative endocarditis

Pathogen	Diagnostic procedure	Proposed treatment
<i>Brucella</i> spp	Blood cultures; serology; culture, immunohistology, and PCR of surgical material	Doxycycline plus rifampin or cotrimoxazole (>3 months’ treatment)
<i>Coxiella burnetti</i>	Serology (IgG phase I, 1 in 800); tissue culture, immunohistology, and PCR of surgical material	Doxycycline plus hydroxychloroquine or doxycycline plus quinolone (>18 months’ treatment)
<i>Bartonella</i> spp	Blood cultures; serology; culture, immunohistology, and PCR of surgical material	$\beta$ lactams or doxycycline plus aminoglycoside (>6 weeks’ treatment)
<i>Chlamydia</i> spp	Serology; culture, immunohistology, and PCR of surgical material	Doxycycline or new fluoroquinolones (long term treatment, optimum duration unknown)
<i>Mycoplasma</i> spp	Serology; culture, immunohistology, and PCR of surgical material	Doxycycline or new fluoroquinolones (>12 weeks’ treatment)
<i>Legionella</i> spp	Blood cultures; serology; culture, immunohistology, and PCR of surgical material	Macrolides plus rifampicin or new fluoroquinolones (>6 months’ treatment)
<i>Tropheryma whipplei</i>	Histology and PCR of surgical material	Cotrimoxazole or $\beta$ lactam plus aminoglycoside (long term treatment, optimum duration unknown)

Adapted from Brouqui and Raoult<sup>11</sup> with permission. PCR, polymerase chain reaction.

Heart: first published as 10.1136/heart.2005.067256 on 10 October 2005. Downloaded from <http://heart.bmj.com/> on April 19, 2024 by guest. Protected by copyright.



**Table 2** Duke criteria for the diagnosis of infective endocarditis (IE) and proposed modifications

Duke criteria	Suggested modifications
<b>Pathological criteria</b>	
Microorganisms demonstrated by culture or histological examination	
Active endocarditis demonstrated by histological examination	
<b>Major criteria</b>	
Positive blood cultures	<i>To be added:</i>
Typical microorganisms consistent with endocarditis from two separate blood cultures	Positive serology for <i>Coxiella burnetii</i>
Microorganisms consistent with endocarditis from persistently positive blood cultures	Bacteraemia due to <i>Staphylococcus aureus</i>
	Positive molecular assay for specific gene targets and universal loci for bacteria and fungi
	Positive serology for <i>Chlamydia psittaci</i>
	Positive serology for <i>Bartonella</i> species
Evidence of endocardial involvement	
Echocardiography: oscillating structures, abscess formation, new partial dehiscence of prosthetic valve	
New valvar regurgitation	
<b>Minor criteria</b>	
Predisposing heart disease	<i>To be omitted:</i>
Fever >38°C	Suspect echocardiography (no major criterion)
Vascular phenomena	
Immunological phenomena	<i>To be added:</i>
Microbiological evidence (no major criterion)	Elevated CRP, elevated ESR, splenomegaly, haematuria, clubbing, splinter haemorrhages, petechiae and purpura
Suspect echocardiography (no major criterion)	Identified IE organism from metastatic lesions
<b>Categories</b>	
Definite:	
Pathological criteria positive	
or 2 major criteria positive	
or 1 major and 2 minor criteria positive	
or 5 minor criteria positive	
Possible:	1 major and 1 minor criterion positive
All cases which cannot be classified as definite or rejected	3 minor criteria positive
Rejected:	
Alternative diagnosis	
Resolution of the infection with antibiotic treatment for ≤4 days	
No histological evidence	

CRP, C reactive protein; ESR, erythrocyte sedimentation rate. Reproduced from Prendergast<sup>17</sup> with permission.

prevalence of staphylococcal infection, and widespread use of transoesophageal echocardiography resulted in further modifications to the Duke criteria (table 2).<sup>19, 20</sup>

### Histological/immunological techniques

Histological findings are included in the Duke diagnostic criteria and pathological examination of resected valve tissue or embolic fragments remains the reference standard for the diagnosis of IE. Pathological examination may also guide antimicrobial treatment if the causative agent can be identified by means of special stains or immunohistological techniques. Electron microscopy has high sensitivity and may help to characterise new microorganisms but is time consuming and expensive. *C burnetii* and *Bartonella* species may be easily detected by serological testing with indirect immunofluorescence or enzyme linked immunosorbent assay (ELISA).

### Molecular techniques

The polymerase chain reaction (PCR), with nucleic acid target or signal amplification, alone or in combination with sequence analysis allows rapid and reliable detection of fastidious and non-culturable agents in blood and surgical material of patients with IE.<sup>21</sup> It may also be of value when phenotypic characterisation is essential after isolation of two or more organisms in separate cultures (most commonly caused by contamination with skin commensals during sampling or polymicrobial infection in intravenous drug misusers). The utility of the technique has recently been validated in a series of patients undergoing valve surgery for IE.<sup>22</sup> Its incorporation as a major Duke diagnostic criterion has been proposed with widespread support.<sup>23</sup> Although the technique offers several advantages, including extreme sensitivity, there are inherent limitations including the risk

of sample contamination, false negatives due to the presence of PCR inhibitors in clinical samples, and an inability to provide information concerning bacterial sensitivity to antimicrobial agents. Results therefore require careful interpretation and the technique seems unlikely to supersede blood cultures as a prime diagnostic tool. Future improvements include the possibility of quantification by real time PCR (eliminating the need for gel electrophoresis) with faster, more accurate results, and the investigation of common antimicrobial resistance genes enabling a targeted and cost effective approach to antibiotic treatment.

### TREATMENT

Successful outcome depends on careful collaboration between the cardiologist, microbiologist, and cardiac surgeon. IE is an evolving clinical entity and careful scrutiny for progression of disease and development of complications is mandatory.<sup>24</sup> Although randomised controlled trials providing an evidence base to guide treatment decisions are virtually non-existent, detailed international guidelines provide robust recommendations.<sup>16, 25</sup>

### Antimicrobial chemotherapy

Recommendations for the treatment of the most common causes of IE have been recently published and provide a detailed review of the multiple available antimicrobial regimens.<sup>2, 25, 26</sup> Bactericidal antibiotics are essential and high serum concentrations are desirable to ensure diffusion into vegetations. Long term treatment for 4–6 weeks is usually necessary to kill dormant bacteria within infected foci, although shortened courses of combination treatment may be considered for those with sensitive organisms. Inpatient parenteral treatment is the traditional and preferred option, but outpatient treatment (ideally with once daily treatment

regimens) may be appropriate for selected patients, particularly once the initial two week period (when risk of complications is highest) has elapsed. Adverse reactions to potent combinations of antibiotics are common during these prolonged courses of treatment and careful clinical and laboratory monitoring is required. There is no evidence to support the use of oral "follow on" treatment after completion of a course of intravenous treatment.

If IE is suspected *after* appropriate blood cultures have been performed, patients should start empirical broad spectrum treatment.<sup>25–26</sup> Once the infecting organism is established, an optimal treatment regimen is determined based on antibiotic susceptibility testing and the minimum inhibitory concentration of principal drugs for the pathogen. Minimum bactericidal concentration is outmoded and no longer required. Newer antimicrobial agents for the treatment of Gram positive cocci (quinupristin/dalfopristin, linezolid, and daptomycin) show promise but require further study before their specific application in IE is clear.

### Resistant pathogens

Bacterial resistance to conventional antibiotic regimens is increasingly recognised and presents a grave therapeutic challenge. Specialist advice is always necessary and early surgery may have a particular role.

Streptococci may resist penicillin and other  $\beta$  lactams due to decreased  $\beta$  lactam affinity of their membrane bound penicillin binding proteins. Intermediate resistance may be overcome by using a  $\beta$  lactam in synergy with an aminoglycoside, and highly resistant strains remain susceptible to vancomycin.

Methicillin resistant staphylococci remain widely prevalent in most hospital environments. Vancomycin resistance, mediated through chromosomal mutations affecting cell wall synthesis, is now an emerging problem. Innovative and often unlicensed combinations of old and new antibiotics may be required and outcome is invariably poor.

Similar problems arise in the treatment of multidrug resistant enterococci. Aminoglycosides have a potential role and streptomycin may be of particular value.

### Special subsets

#### Intracardiac prosthetic material

IE may affect prosthetic valves, permanent pacemakers, or intracardiac defibrillators. Cases involving intracoronary stents or closure devices have been reported, though they remain extremely rare. A 4–6 week course of antibiotics is recommended and all infected material should be explanted when possible. Repeat surgery is recommended for all those with early prosthetic valve endocarditis and for the development of complications in patients with a late presentation.

#### Intravenous drug users

A methicillin sensitive *S aureus* is the causative organism in the majority of cases and antibiotic regimens should reflect this. Treatment will include either penicillinase resistant penicillins or vancomycin, depending on the likelihood of methicillin resistance. Polymicrobial infection is common, and *P aeruginosa* and *Candida* species should be considered for patients who do not respond to treatment. Short course combination treatment and oral regimens may be considered for those with IE localised to the right heart.

#### Antiplatelet and anticoagulant treatment

Despite experimental evidence to suggest a beneficial role of aspirin in reducing embolic complications and attenuating microbial virulence, a recent randomised trial in left sided IE found no significant benefits and increased risk of bleeding.<sup>27</sup> Similarly, anticoagulant treatment carries significant hazard in IE and should be avoided unless essential.<sup>28</sup>

### Surgery

Surgery for IE is potentially life saving and required in 25–30% of cases during acute infection and in 20–40% during convalescence.<sup>29–30</sup> Assessment of the impact of surgery on outcome is difficult since patients referred for surgery are commonly those with severe complications related to virulent organisms. Conversely, the sickest patients (often the elderly with attendant co-morbidity) are often deemed unfit for surgery. Nevertheless, overall surgical mortality in active IE is 8–16%, with actuarial survival rates of 75% and 61% at five and 10 years, respectively.<sup>31</sup>

Clear indications for surgery include the following: (1) haemodynamic decompensation due to acute valvar regurgitation; (2) persistent fever and bacteraemia despite appropriate antibiotic treatment; (3) development of abscesses or fistulae caused by local spread of infection; and (4) involvement of microorganisms highly resistant to treatment (for example, fungi, *Brucella*, *Coxiella* species) or (5) with potential for rapid tissue destruction (for example, *Staphylococcus lugdunensis*).<sup>25</sup> A low threshold for surgery is also recommended in early prosthetic valve endocarditis, particularly when associated with *S aureus* infection, and in those with complications arising from a late presentation.<sup>32</sup> Surgery may be considered for patients with large vegetations of high embolic potential (notably those > 10 mm or on the mitral valve), those increasing in size despite antibiotic treatment, and those > 20 mm on the tricuspid valve after recurrent pulmonary emboli. In the difficult scenario where cerebral embolism causes neurological deficit, surgery should be considered early (within 72 hours) once cerebral haemorrhage has been excluded. If this is impractical, surgery should be deferred for 3–4 weeks in those with cerebral infarction and for longer in those with intracerebral haemorrhage.<sup>33</sup>

After complete excision of all infected tissue, valve replacement with a mechanical or biological prosthesis is required by the majority of patients. Use of a homograft has particular attractions in those with IE affecting the aortic valve, especially when complicated by abscess formation, though uptake in contemporary series was lower than anticipated, reflecting the need for particular surgical expertise and possible difficulties with valve procurement.<sup>3–34</sup> Good results from conservative valve preservation techniques, particularly mitral valve repair and the Ross procedure, have also been reported in several series, though technical expertise is required and experience to date is limited.

Final outcome has little relation to the duration of previous antibiotic treatment and surgery should not be delayed when clearly indicated in the vain hope that a sterile operative field can be achieved.<sup>31</sup> The duration of postoperative antibiotic treatment is determined by the results of valve culture. For patients with negative valve cultures, preoperative plus postoperative antimicrobial treatment should equal a full course of recommended treatment. Patients with positive valve cultures and most of those with prosthetic valve endocarditis should receive a full course of treatment after surgery. Survivors of surgery are a high risk group for recurrent IE and vigorous prophylaxis is essential in this group.

### PROPHYLAXIS

The efficacy of antibiotic prophylaxis in the prevention of IE remains controversial. Case control studies indicate that prophylaxis prevents only a limited number of cases and randomised controlled trials have never been undertaken (nor are they likely), since the number of patients required would be excessive and ethical issues prevent use of a placebo group.<sup>35</sup> Overall uptake of prophylaxis and levels of patient education are poor.<sup>3</sup> Bacteraemia related to daily transfer of

**Table 3** Summary of current recommendations for prophylaxis of IE

Procedural risk	Group A: high risk	Group B: lower risk
<b>Cardiac conditions conferring risk of IE</b>	Valve prosthesis (mechanical, homograft, or bioprosthesis) Cyanotic congenital heart disease and pulmonary-systemic shunts History of IE	Valvar disease; aortic regurgitation, mitral regurgitation, mitral stenosis, aortic stenosis Mitral valve prolapse with mitral regurgitation or valve thickening Bicuspid aortic valve Non-cyanotic congenital heart disease Obstructive hypertrophic cardiomyopathy (with murmur)
<b>Indications for antibiotic prophylaxis: oral or dental procedures</b>		
High	Recommended	Optional*
Low	Not recommended	Not recommended
<b>Indications for antibiotic prophylaxis: non-oral or dental procedures†</b>		
Very high	Recommended	Recommended
High	Recommended	Optional*
Low	Optional*	Not recommended
Negligible	Not recommended	Not recommended

\*Factors determining whether antibiotic prophylaxis is prescribed when deemed optional. **For:** age >65 years; cardiac, renal, respiratory, and hepatic insufficiency; diabetes mellitus; acquired, constitutional, or therapeutic immunosuppression; oral or dental condition; inadequate oral or dental hygiene; important bleeding (intensity, duration); technically difficult or prolonged procedure; patient's opinion after receiving information. **Against:** allergy to several antibiotics; patient's opinion after receiving information.

†Diagnostic and therapeutic interventions likely to produce bacteraemia: bronchoscopy (rigid instrument), cystoscopy during urinary tract infection, biopsy of urinary tract or prostate, tonsillectomy and adenoidectomy, oesophageal dilatation or sclerotherapy, instrumentation of obstructed biliary tract, transurethral resection of prostate, lithotripsy, and gynaecological procedures in the presence of infection.

organisms from mouth to blood is more often implicated than dental or other surgical procedures.

Current recommendations therefore maintain the principle of antibiotic prophylaxis while limiting indications to cases with the highest ratio of individual benefit to individual and collective risk (table 3).<sup>25 36 37</sup> General preventive measures (good dental care and skin hygiene, avoidance of unnecessary procedures and instrumentation) remain essential and recommended antibiotic regimens are widely available.

### INTERNATIONAL COLLABORATION

To date, knowledge of the clinical features and natural history of IE has relied largely on small, uncontrolled, outdated studies; modern, well designed registries and trials reflecting current disease patterns are long overdue. The recently elaborated International Collaboration on Endocarditis (ICE) will contribute significantly to both our current and future knowledge of IE, allowing the development of new diagnostic and treatment strategies.<sup>38</sup> Since the collaboration's inception in 1999, 39 sites in 16 countries have become involved in this project headed by an international steering committee. The initial merger of existing databases has yielded a primary group of 2200 well characterised patients with definite IE by the Duke criteria, allowing the assessment of regional differences in presentation and outcome. Indeed, analysis of the dataset has already enabled valuable insight into emerging epidemiological patterns of the disease and its clinical presentation.<sup>39-42</sup> Although databases from specialised units have the potential for referral bias and consequent overreporting of seriously ill patients and those with uncommon disease manifestations, the ICE infrastructure will allow prospective recording of all new cases of IE, including a minimum standardised clinical dataset, with reanalysis of microbiological samples and echocardiographic studies in core laboratory facilities. In future, this platform will provide the basis for sorely needed adequately sized randomised clinical trials in the management and treatment of IE.

### NEW DEVELOPMENTS

Several exciting developments offer the prospect of improved prevention and treatment of IE. Vaccines targeted at specific bacterial adhesins may inhibit valve colonisation, and encouraging results have been obtained with antistreptococcal

and antistaphylococcal vaccination in vitro and with haemodialysis patients in vivo.<sup>43 44</sup> Newer antibacterial agents with novel effects may digest the essential Gram positive peptidoglycan by triggering of bacteriophage encoded bacteriolytic enzymes or they may attenuate the invasive properties of *S aureus* by reducing secretion of haemolysins and toxins.<sup>45 46</sup> Lastly, modified biomaterials in development may reduce the risk of IE in patients with artificial heart valves or other intracardiac prosthetic material. Despite these advances, however, the changing face of IE seems set to challenge the endeavours of cardiologists, microbiologists, and cardiac surgeons for many decades yet.

### REFERENCES

- 1 Mylonakis E, Calderwood SB. Infective endocarditis in adults. *N Engl J Med* 2001;**345**:1318-30.
- 2 Moreillon P, Que Y-A. Infective endocarditis. *Lancet* 2004;**363**:139-49.
- 3 Tornos P, lung B, Permyer-Miralda G, et al. Infective endocarditis in Europe: lessons from the Euro heart survey. *Heart* 2005;**91**:571-5.
- 4 Hoehn B, Alla F, Selton-Suty C, et al. Changing profile of infective endocarditis: results of a 1-year survey in France. *JAMA* 2002;**288**:75-81.
- 5 Vahanian A. The growing burden of infective endocarditis in the elderly. *Eur Heart J* 2003;**24**:1539-40.
- 6 Bouza E, Menasalvas A, Munoz P, et al. Infective endocarditis: a prospective study at the end of the twentieth century—new predisposing conditions, new etiologic agents, and still a high mortality. *Medicine (Baltimore)* 2001;**80**:298-307.
- 7 Miró JM, del Rio A, Mestres CA. Infective endocarditis in intravenous drug abusers and HIV-1 infected patients. *Infect Dis Clin North Am* 2002;**16**:273-95.
- 8 Wilson LE, Thomas DL, Astemborski J, et al. Prospective study of infective endocarditis among injection drug users. *J Infect Dis* 2002;**185**:1761-6.
- 9 Piper C, Körfer R, Horstkotte D. Prosthetic valve endocarditis. *Heart* 2001;**85**:590-3.
- 10 Delahaye F, Rial MO, de Gevigney G, et al. A critical appraisal of the quality of the management of infective endocarditis. *J Am Coll Cardiol* 1999;**33**:788-93.
- 11 Brouqui P, Raoult D. Endocarditis due to rare and fastidious bacteria. *Clin Microbiol Rev* 2001;**14**:177-207.
- 12 Evangelista A, González-Alujas MT. Echocardiography in infective endocarditis. *Heart* 2004;**90**:614-7.
- 13 Greaves K, Mou D, Patel A, et al. Clinical criteria and the appropriate use of transthoracic echocardiography for the exclusion of infective endocarditis. *Heart* 2003;**89**:273-5.
- 14 Von Reyn CF, Levy BS, Arbeit RD, et al. Infective endocarditis: an analysis based on strict case definitions. *Ann Intern Med* 1981;**94**:505-17.
- 15 Durack DT, Lukes AS, Bright DK, and the Duke Endocarditis Service. New criteria for diagnosis of infective endocarditis: utilization of specific echocardiographic findings. *Am J Med* 1994;**96**:200-9.
- 16 Bayer AS, Bolger AF, Taubert KA, et al. Diagnosis and management of infective endocarditis and its complications. *Circulation* 1998;**98**:2936-48.
- 17 Prendergast BD. Diagnostic criteria and problems in infective endocarditis. *Heart* 2004;**90**:611-3.



18 **Lamas C**, Eykyn SJ. Suggested modifications to the Duke criteria for the clinical diagnosis of native valve and prosthetic valve endocarditis: analysis of 118 pathologically proven cases. *Clin Infect Dis* 1997;**25**:713-9.

19 **Fournier PE**, Casalta JP, Habib G, et al. Modification of the diagnostic criteria proposed by the Duke endocarditis service to permit improved diagnosis of Q fever endocarditis. *Am J Med* 1996;**100**:629-33.

20 **Li JS**, Sexton DJ, Mick N, et al. Proposed modifications to the Duke criteria for the diagnosis of infective endocarditis. *Clin Infect Dis* 2000;**30**:633-8.

21 **Miller BC**, Moore JE. Current trends in the molecular diagnosis of infective endocarditis. *Eur J Clin Microbiol Infect Dis* 2004;**23**:353-65.

22 **Breitkopf C**, Hammel D, Scheld HH, et al. Impact of a molecular approach to improve the microbiological diagnosis of infective heart valve endocarditis. *Circulation* 2005;**111**:1415-21.

23 **Miller BC**, Moore JE, Mallon P, et al. Molecular diagnosis of infective endocarditis: a new Duke's criterion. *Scand J Infect Dis* 2001;**33**:673-80.

24 **Oakley CM**, Hall RJC. Endocarditis: problems: patients being treated for endocarditis and not doing well. *Heart* 2001;**85**:470-4.

25 **The Task Force on Infective Endocarditis of the European Society of Cardiology**. Guidelines on prevention, diagnosis and treatment of infective endocarditis: executive summary. *Eur Heart J* 2004;**25**:267-76.

26 **Elliot TSJ**, Foweraker J, Gould FK, et al. Guidelines for the antibiotic treatment of endocarditis in adults: report of the Working Party of the British Society for Antimicrobial Chemotherapy. *J Antimicrob Chemother* 2004;**54**:971-81.

27 **Chan KL**, Dumesnil JG, Cujec B, et al. A randomized trial of aspirin on the risk of embolic events in patients with infective endocarditis. *J Am Coll Cardiol* 2003;**42**:775-80.

28 **Tornos P**, Almirante B, Mirabet S, et al. Infective endocarditis due to *Staphylococcus aureus*: deleterious effect of anticoagulant therapy. *Arch Intern Med* 1999;**159**:473-5.

29 **Olaison L**, Pettersson G. Current best practices and guidelines: indications for surgical intervention in infective endocarditis. *Infect Dis Clin North Am* 2002;**16**:453-75.

30 **Jault F**, Gandjbakhch I, Rama A, et al. Active native valve endocarditis: determinants of operative death and late mortality. *Ann Thorac Surg* 1997;**63**:1737-41.

31 **Alexiou C**, Langley SM, Stafford H, et al. Surgery for active culture-positive endocarditis: determinants of early and late outcome. *Ann Thorac Surg* 2000;**69**:1448-54.

32 **Habib G**, Tribouilloy C, Thuny F, et al. Prosthetic valve endocarditis: who needs surgery? A multicentre study of 104 cases. *Heart* 2005;**91**:954-9.

33 **Gillinov AM**, Shah RV, Curtis WE, et al. Valve replacement in patients with endocarditis and acute neurological deficit. *Ann Thorac Surg* 1996;**61**:1125-9.

34 **Knosalla C**, Weng Y, Yankah AC, et al. Surgical treatment of active infective aortic valve endocarditis with associated periannular abscess. 11 year results. *Eur Heart J* 2000;**21**:490-7.

35 **Strom BL**, Abrutyn E, Berlin JA, et al. Dental and cardiac risk factors for infective endocarditis: a population-based, case-control study. *Ann Intern Med* 1998;**129**:761-9.

36 **Dajani AS**, Taubert KA, Wilson W, et al. Prevention of bacterial endocarditis: recommendations by the American Heart Association. *JAMA* 1997;**277**:1794-801.

37 **Danchin N**, Duval X, Lepout C. Prophylaxis of infective endocarditis: French recommendations 2002. *Heart* 2005;**91**:715-8.

38 **Cabell CH**, Abrutyn E. Progress toward a global understanding of infective endocarditis: lessons from the International Collaboration on Endocarditis. *Clin Cardiol* 2003;**21**:147-58.

39 **Benjamin DK Jr**, Miro JM, Hoen B, et al. Candida endocarditis: contemporary cases from the International Collaboration of Infectious Endocarditis merged database (ICE-MD). *Scand J Infect Dis* 2004;**36**:453-5.

40 **Chirouze C**, Cabell CH, Fowler VG Jr, et al. Prognostic factors in 61 cases of *Staphylococcus aureus* prosthetic valve infective endocarditis from the International Collaboration on Endocarditis merged database. *Clin Infect Dis* 2004;**38**:1323-7.

41 **Chu VH**, Cabell CH, Abrutyn E, et al. Native valve endocarditis due to coagulase-negative staphylococci: report of 99 episodes from the International Collaboration on Endocarditis merged database. *Clin Infect Dis* 2004;**39**:1527-30.

42 **Hoen B**, Chirouze C, Cabell CH, et al. Emergence of endocarditis due to group D streptococci: findings from the merged database of the International Collaboration on Endocarditis. *Eur J Clin Microbiol Infect Dis* 2005;**24**:12-6.

43 **Kitten T**, Munro CL, Wang A, et al. Vaccination with FimA from *Streptococcus parasangui* protects rats from endocarditis caused by other viridans streptococci. *Infect Immun* 2002;**70**:422-5.

44 **Shinefield H**, Black S, Fattom A, et al. Use of a *Staphylococcus aureus* conjugate vaccine in patients receiving haemodialysis. *N Engl J Med* 2002;**346**:491-6.

45 **Schuch R**, Nelson D, Fischetti VA. A bacteriolytic agent that detects and kills. *Bacillus anthracis* *Nature* 2002;**418**:884-9.

46 **Mayville P**, Ji G, Beavis R, et al. Structure-activity analysis of synthetic autoinducing thiolactone peptides from *Staphylococcus aureus* responsible for virulence. *Proc Natl Acad Sci USA* 1999;**96**:1218-23.

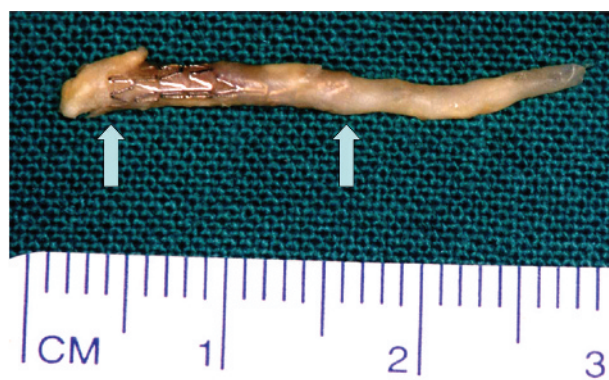
## IMAGES IN CARDIOLOGY

doi: 10.1136/hrt.2005.076687

### Coronary endarterectomy and stent removal with off-pump coronary artery bypass surgery

In-stent restenosis remains a significant limitation of coronary artery stenting, occasionally requiring bypass grafting. However, in cases of extensive stent length, the coronary artery-distal graft anastomosis may be technically challenging. We report a patient who underwent implantation of two stents (a proximal 2.5 mm in diameter/24 mm in length and a distal 2.5 mm in diameter/13 mm in length) in the left anterior descending (LAD) coronary artery and one stent (2.5 mm in diameter/24 mm in length) in the obtuse marginal branch (ClearFlex-St, ClearStream Technologies Ltd, Enniscorthy, Co Wexford, Ireland). Four months later, he presented with recurrent angina, and coronary angiography showed total occlusion of the LAD. During surgery, endarterectomy (28 mm in length) was performed in the LAD. In addition, the distal stent was carefully dissected from the endothelium and removed together with endarterectomy material (in panel the arrows indicate the proximal and distal ends of the removed stent). The left internal mammary artery was subsequently anastomosed to the LAD at the site of the stentectomy. The whole procedure was performed without the use of extracorporeal circulation. Eighteen months after surgery, the patient remains asymptomatic on antithrombotic and anticoagulant treatment.

Our experience adds to the few cases of stent removal reported previously. Endarterectomy combined with stent removal is an uncommon, technically demanding surgical



procedure, associated with good results. The need for this procedure may increase in the future, given the increase in the use of coronary artery stents.

**K D Triantafyllou**  
**S Frangoulis**  
**T M Kolettis**  
 kostatriantafillou@yahoo.gr