



Editor's choice
Scan to access more
free content

ORIGINAL ARTICLE

Prognostic value of plasma B-type natriuretic peptide levels after exercise in patients with severe asymptomatic aortic stenosis

Romain Capoulade,¹ Julien Magne,² Raluca Dulgheru,² Zeineb Hachicha,¹ Jean G Dumesnil,¹ Kim O'Connor,¹ Marie Arsenault,¹ Sébastien Bergeron,¹ Luc A Pierard,² Patrizio Lancellotti,² Philippe Pibarot¹

► Additional material is published online only. To view please visit the journal online (<http://dx.doi.org/10.1136/heartjnl-2014-305729>).

¹Institut Universitaire de Cardiologie et de Pneumologie de Québec/Québec Heart & Lung Institute, Laval University, Québec city, Québec, Canada
²Department of Cardiology, GIGA Cardiovascular Sciences, University of Liège Hospital, Heart Valve Clinic, CHU Sart Tilman, Liège, Belgium

Correspondence to

Dr Philippe Pibarot, Institut Universitaire de Cardiologie et de Pneumologie de Québec, 2725 Chemin Sainte-Foy, Québec city, Québec, Canada G1V-4G5; philippe.pibarot@med.ulaval.ca or Professor Patrizio Lancellotti, CHU Sart Tilman, Domaine Sart Tilman 1, Liège, Belgium 4000; plancellotti@chu.ulg.ac.be

RC and JM contributed equally to this study to this study.

Received 18 February 2014
Revised 29 May 2014
Accepted 1 June 2014
Published Online First 3 July 2014



► <http://dx.doi.org/10.1136/heartjnl-2014-306253>



To cite: Capoulade R, Magne J, Dulgheru R, et al. *Heart* 2014;**100**:1606–1612.

ABSTRACT

Background Exercise-stress echocardiography is useful in management and risk stratification of patients with asymptomatic aortic stenosis (AS). Resting B-type natriuretic peptide (BNP) level is associated with increased risk of adverse events. The incremental prognostic value of BNP response during exercise is unknown.

Objective The purpose of this study was to assess the usefulness of plasma level of BNP during exercise to predict occurrence of events in asymptomatic patients with severe AS.

Methods Resting and exercise-stress echocardiographic data and plasma BNP levels were prospectively collected in 211 asymptomatic AS patients in whom 157 had severe AS with preserved LVEF in two centres. The study end-point was the occurrence of death or aortic valve replacement.

Results Plasma BNP level increased from rest to exercise ($p < 0.0001$). During a mean follow-up of 1.5 ± 1.2 years, 87 patients with severe AS reached the predefined end-point. Higher peak-exercise BNP level was associated with higher occurrence of adverse events ($p < 0.0001$). In multivariate analysis, second and third tertiles of peak-exercise BNP (T2: HR=2.9; $p=0.002$ and T3: HR=5.3; $p < 0.0001$, respectively) were powerful predictors of events compared with the first tertile. Further adjustment for resting BNP provided comparable results (T2: HR=2.8; $p=0.003$ and T3: HR=5.0; $p < 0.0001$). This relationship persisted in both subsets of patients with low or high resting BNP.

Conclusions This study reports that peak-exercise BNP level provides significant incremental prognostic value beyond what is achieved by demographic and echocardiographic data, as well as resting BNP level.

INTRODUCTION

Aortic valve replacement (AVR) is the only efficient treatment for aortic stenosis (AS). However, the optimal timing of AVR in asymptomatic patients with severe AS remains a matter of debate. Both the American College of Cardiology/American Heart Association (ACC/AHA) and the European Society of Cardiology (ESC) guidelines recommend AVR for patients with severe AS who present with symptoms or LV systolic dysfunction (ie, LVEF $< 50\%$).^{1, 2} Patients with AS are often older, have more comorbidities and are less physically active, which make the

assessment of symptoms challenging and unreliable.^{3–5} Hence, this raises the concern that a large proportion of these patients with AS could be operated too late in the course of the disease, which could negatively impact on the outcome.^{6–8} Previous studies reported that exercise testing, exercise-stress echocardiography and resting plasma levels of B-type natriuretic peptide (BNP) can improve risk stratification of patients with asymptomatic AS.^{9–15} The BNP response to exercise has been shown to be associated with outcomes in various cardiovascular diseases.^{16–19} We hypothesised that plasma level of BNP after exercise provided incremental prognostic value beyond what is achieved by demographic, echocardiographic and resting BNP data.

METHODS

Patient population

We prospectively enrolled 211 asymptomatic patients with moderate to severe AS (peak aortic jet velocity > 2.5 m/s and aortic valve area (AVA) < 1.5 cm²) and preserved LVEF in two centres (Quebec, $n=40$; and Liège, $n=171$). Patients with the following criteria were excluded: (i) moderate to severe aortic regurgitation or mitral valve disease; (ii) pregnant or lactating women; (iii) abnormal exercise test as previously defined;¹² and (iv) estimated glomerular filtration rate < 60 mL/min (Modification of the Diet in Renal Disease (MDRD) formula). The study was approved by the relevant Ethics Committees, and patients signed a written informed consent.

Clinical data

Clinical data included age, gender, height, weight, body surface area (BSA), systolic and diastolic blood pressures, documented diagnoses of hypertension, diabetes, hypercholesterolaemia, and history of smoking, as previously defined.¹⁹

Exercise protocol

A symptom-limited graded bicycle exercise test was performed in the semisupine position on a dedicated tilting exercise table, following previously published settings.¹²

Doppler echocardiographic data

Doppler echocardiographic data were obtained at rest and at peak-exercise (peak-ex).

The Doppler echocardiographic indices of AS severity included peak aortic jet velocity, peak and mean transvalvular pressure gradients, and AVA indexed to BSA. Severe AS was defined according to ACC/AHA—ESC guidelines.^{1 2}

The relative wall thickness and LV mass indexed to BSA were calculated.²⁰ LVEF was measured with the use of biplane Simpson method.

Left atrial (LA) area was obtained by planimetry at end systole from apical four-chamber view and was indexed to BSA. E to e' ratio was calculated from the E-wave of mitral inflow and the average of septal and lateral mitral annulus e'-wave. Systolic pulmonary arterial pressure (SPAP) was evaluated from the regurgitant jet of the tricuspid insufficiency.¹² Resting and exercise pulmonary hypertension (PHT) were defined as SPAP >50 and >60 mmHg, respectively. As a measure of global LV haemodynamic load, we calculated the valvulo-arterial impedance (Z_{va}).²¹

Plasma BNP level

Venous blood samples for BNP measurements were drawn before echocardiography after 20 min of supine rest (resting BNP) and at peak-ex, that is, within the 3 min following the end of exercise (peak-ex BNP) as previously validated.¹⁹

Study end-point

The study end-point was the occurrence of death or AVR motivated by development of symptoms or LV dysfunction (ie, class I indication). To ensure blinding, both resting and peak-ex BNP levels were not transmitted to the treating physician or surgeon.

Statistical analysis

Patients were divided into three groups according to tertiles of peak-ex BNP level. Continuous data were expressed as mean±SD and were tested for normality of distribution and homogeneity of variances with the Shapiro–Wilk and Levene tests, respectively. Groups were compared with one-way Analysis of Variance (ANOVA) followed by a Tukey's post hoc test when appropriate. Categorical data were expressed as percentage and groups were compared with the χ^2 or Fischer's exact tests when appropriate. BNP levels were reported as median (IQR) and the natural logarithm transformation was applied to BNP levels. Difference between resting and peak-ex BNP levels was obtained with paired t test and correlations between resting BNP and peak-ex BNP or absolute change in BNP (δ BNP) were determined using Pearson's product-moment correlations. Multivariate linear regression analysis, including age, gender, peak-ex workload and exercise-induced increase in mean gradient, stroke volume index and Z_{va} , was performed to identify the independent determinants of peak-ex BNP level. Kaplan–Meier curves and log-rank tests of the time-to-event data were used to assess the effect of tertiles of peak-ex BNP and of δ BNP on the composite end-point of death or AVR. The relationships among resting, peak-ex, δ BNP levels and event-free survival were assessed with the use of individual and multivariate Cox proportional-hazard analyses. The traditional risk factors of the composite of death or AVR and all variables with p value <0.10 in individual Cox analysis (ie, age, gender, resting mean gradient, resting Z_{va} , resting indexed LA area and exercise-induced increase in heart rate, mean gradient and Z_{va}) were entered in the multivariate Cox model. The proportional-hazards assumption was checked with the use of Schoenfeld residuals. The incremental predictive

Table 1 Clinical characteristics and exercise capacity data according to tertiles of peak-ex BNP level

	Whole Cohort n=211	Tertile 1 (6–42 pg/mL) n=71	Tertile 2 (43–91 pg/mL) n=70	Tertile 3 (92–956 pg/mL) n=70	p Value†
Clinical data					
Age, years	68±11	65±12	69±10*	69±10*	0.03
Male gender, %	64%	63%	66%	63%	0.91
Height, cm	167±8	167±7	168±10	166±8	0.50
Weight, kg	74±13	76±12	76±12	72±13	0.21
Body surface area, m ²	1.82±0.18	1.82±0.18	1.83±0.18	1.81±0.19	0.71
Body mass index, kg/m ²	26.6±3.7	27.1±3.9	26.8±3.5	26.0±3.6	0.27
Heart rate, beats/min	70±12	71±12	70±10	70±13	0.99
History of hypertension, %	53%	57%	49%	53%	0.65
Systolic blood pressure, mm Hg	141±21	142±24	139±17	142±21	0.71
Diastolic blood pressure, mm Hg	77±11	79±11	74±10*	77±11	0.04
Hypercholesterolaemia, %	46%	48%	43%	47%	0.83
Diabetes, %	14%	13%	12%	17%	0.44
History of smoking, %	27%	24%	31%	28%	0.65
Resting BNP level, pg/mL	43 (24–81)	16 (9–26)	45 (39–60)	101 (76–133)	By design
Exercise testing data					
Duration, min	9.1±3.1	9.0±2.6	8.9±2.9	9.4±3.6	0.69
Peak-ex workload, watts	99±35	102±38	101±35	94±33	0.35
Peak-ex heart rate, beats/min	120±19	124±20	119±16	118±19	0.13
Percent of predicted maximal heart rate, %	91±12	92±12	91±11	90±14	0.83
Peak-ex systolic blood pressure, mm Hg	179±23	184±23	177±24	177±22	0.17
Peak-ex diastolic blood pressure, mm Hg	87±14	90±14	85±14	86±13	0.09
Peak-ex BNP level, pg/mL	58 (29–115)	20 (13–30)	59 (53–74)	146 (115–201)	By design

Values are mean±SD except for BNP data which are median (IQR).

†p Value of the one-way ANOVA. The following symbols indicate the significance of the Tukey's post hoc test: *p<0.05 from 'Tertile 1'. BNP, B-type natriuretic peptide; Peak-ex, peak-exercise.

Table 2 Resting and peak-exercise echocardiographic data according to tertiles of peak-exercise BNP level

	Whole cohort n=211	Tertile 1 (6–42 pg/mL) n=71	Tertile 2 (43–91 pg/mL) n=70	Tertile 3 (92–956 pg/mL) n=70	p Value†
Resting echocardiographic data					
Stroke volume, mL	84±19	86±20	86±19	79±19	0.05
Stroke volume index, mL/m ²	46±11	48±11	47±11	44±11	0.13
Peak aortic jet velocity, m/s	4.0±0.7	3.7±0.7	4.1±0.7*	4.1±0.8*	0.001
Peak transvalvular gradient, mm Hg	66±24	59±21	69±23*	71±25*	0.006
Mean transvalvular gradient, mm Hg	41±15	37±13	43±15*	43±16*	0.02
Aortic valve area, cm ²	0.93±0.21	0.98±0.19	0.90±0.20*	0.90±0.24*	0.03
Indexed aortic valve area, cm ² /m ²	0.51±0.12	0.54±0.11	0.49±0.10*	0.50±0.13*	0.03
Indexed left atrial area, cm ² /m ²	11.6±3.3	11.0±3.0	10.9±3.1	12.8±3.4*‡	0.0007
E to e'	10.8±4.2	9.9±3.9	11.2±3.8	11.4±4.8	0.15
Pulmonary hypertension, %	3%	1%	1%	7%	0.09
Relative wall thickness	0.51±0.12	0.48±0.11	0.51±0.09	0.54±0.15*	0.04
LV mass index, g/m ²	124±45	123±47	126±47	123±41	0.88
LVEF, %	66±7	67±8	66±6	66±8	0.66
Valvulo-arterial imp., mm Hg/ mL m ²	4.1±1.1	3.9±0.8	4.0±1.0	4.5±1.3*‡	0.003
Peak-exercise-stress echocardiographic data					
Stroke volume, mL	94±29	91±27	94±32	97±30	0.49
Stroke volume index, mL/m ²	49±16	47±15	49±17	50±16	0.49
Peak aortic jet velocity, m/s	4.6±0.8	4.3±0.7	4.7±0.7*	4.7±0.8*	0.01
Peak transvalvular gradient, mm Hg	86±28	78±27	89±26*	90±30*	0.02
Mean transvalvular gradient, mm Hg	53±19	48±16	56±18*	56±21*	0.01
Aortic valve area, cm ²	1.01±0.29	1.09±0.26	0.97±0.29*	0.98±0.30	0.03
Indexed aortic valve area, cm ² /m ²	0.56±0.16	0.60±0.15	0.53±0.16*	0.55±0.17	0.03
Pulmonary hypertension, %	32%	23%	34%	39%	0.10
LVEF, %	68±9	68±10	69±8	67±9	0.42
Valvulo-arterial imp., mm Hg/ mL m ²	5.1±1.9	5.2±1.8	5.2±1.9	5.0±1.9	0.82

Values are mean±SD.

†p Value of the one-way ANOVA. The following symbols indicate the significance of the Tukey's post hoc test: *p<0.05 from 'Tertile 1'; ‡p<0.05 from 'Tertile 2'.
BNP, B-type natriuretic peptide.

value of peak-ex BNP was assessed by calculating the net reclassification improvement (NRI) for 1-year events (death or AVR) using the NRI & IDI program codes downloaded online (<http://www.ucr.uu.se/en/index.php/ucr-statistics/program-code/306-nri-and-idi>).^{22, 23} Category cut-points were defined as observed event rate at 1-year (ie, 28%) or tertiles of risk probabilities determined using the model with established risk factors (ie, <19%, 19%–35%, and ≥35%). Patients were reclassified according to 1-year predicted probabilities after addition of peak-ex BNP. The receiver operating characteristic (ROC) curve analyses were performed to determine the accuracy (area under the curve, AUC) as well as the best cut-point values for resting and peak-ex BNP levels to predict 1-year events expressed as a binary outcome. Statistical analyses were done with Stata Software (V.11.0). A p value <0.05 was considered statistically significant.

RESULTS

Population characteristics

Baseline characteristics of the population are depicted in [tables 1 and 2](#). Severe AS was present in 157 (74%) patients. The baseline characteristics (all p>0.05; data not shown) and 1-year event rates (65% vs 73%; p=0.87) were similar in the subset of patients enrolled from Canada versus those enrolled from Belgium.

Response of BNP to exercise

BNP level increased significantly from rest to peak-ex (p<0.0001; [figure 1A](#)) and both resting and peak-ex BNP levels were strongly correlated (r=0.89, p<0.0001; [figure 1B](#)). The exercise-induced absolute change in BNP was 9 (2–29) pg/mL and 182 (86%) patients exhibited an increase in BNP during exercise (ie, δ BNP>0). There was a significant but modest correlation between resting BNP and absolute δ BNP (r=0.31, p<0.0001; [figure 1C](#)). Peak-ex BNP correlated weakly and negatively with peak-ex workload (r=–0.16; p=0.03).

Patients in the second (T2) and third (T3) tertiles of peak-ex BNP had higher resting BNP level (p<0.0001, [table 1](#)); they were significantly older (p=0.03, [table 1](#)) and had more severe AS ([table 2](#)) compared with patients in the first tertile (T1). The exercise testing data were similar between the three tertiles ([table 1](#)). Resting indexed LA area and Z_{va} were higher in T3 compared with T1 and T2 ([table 2](#)).

Correlates of peak-ex BNP

Resting Doppler echocardiographic variables associated with peak-ex BNP level were mean gradient, indexed LA area and Z_{va} ([table 3](#)). After adjustment for age, gender and peak-ex workload, as well as for exercise-stress echocardiographic variables associated with peak-ex BNP level ([table 3](#), Multivariate

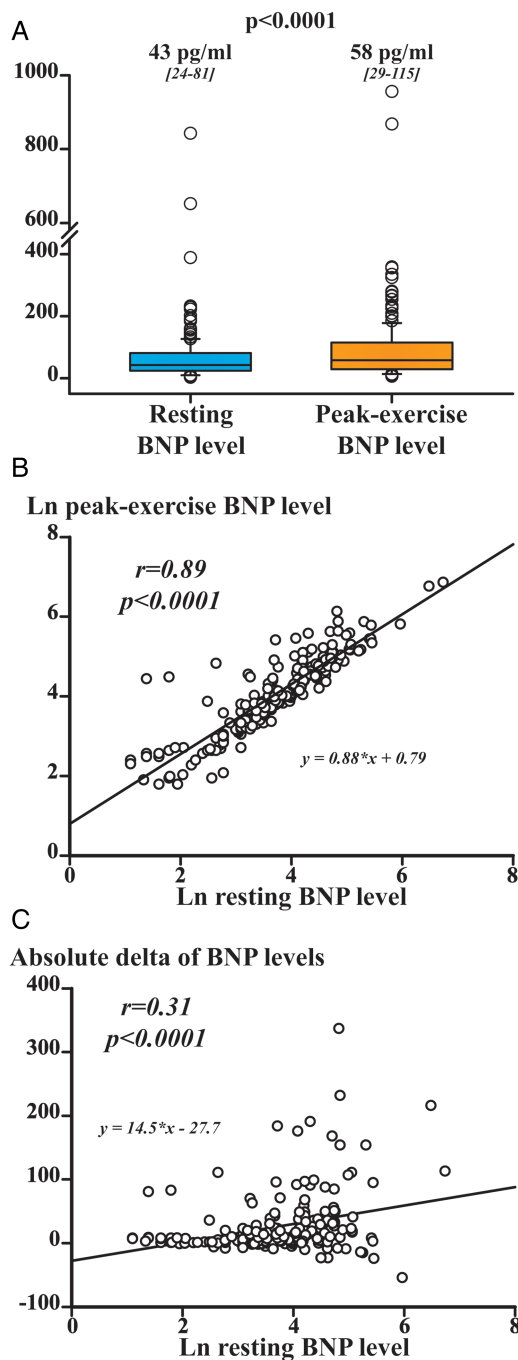


Figure 1 Distribution and association among resting, peak-exercise and δ B-type natriuretic peptide (BNP) levels in the whole cohort (n=211). (A) Shows comparison between resting and peak-exercise BNP levels; the box shows 25th and 75th percentiles, the median line on the box shows the median value, and error bars the 10th and 90th percentiles; circles are outliers; the numbers of the top of the graph are median (IQR) value of BNP levels. (B) Shows correlation between Ln resting BNP and Ln peak-exercise BNP level. (C) Shows correlation between Ln resting BNP and absolute δ of BNP levels; r and p value are from Pearson's product-moment correlations; several data point were superimposed; the formula represents the equation of the regression line.

Model), resting mean gradient ($p=0.03$), indexed LA area ($p=0.04$) and Z_{va} ($p=0.009$) remained the only variables associated with peak-ex BNP level.

Table 3 Correlates of peak-exercise BNP level in the whole cohort (n=211)

Ln peak-exercise BNP	Individual		Multivariate model*	
	β coeff. \pm SE	p Value	β coeff. \pm SE	p Value
Resting mean transvalvular gradient, mm Hg	0.25 \pm 0.004	0.0003	0.16 \pm 0.005	0.03
Resting indexed left atrial area, cm ² /m ²	0.23 \pm 0.02	0.001	0.15 \pm 0.02	0.04
Resting valvulo-arterial impedance, mm Hg/mL m ²	0.25 \pm 0.06	0.0002	0.20 \pm 0.07	0.009

*Multivariate model included age, gender, peak-exercise workload, and exercise-induced increase in heart rate, mean transvalvular gradient and valvulo-arterial impedance. β coeff. is the standardised regression coefficient \pm SE. BNP, B-type natriuretic peptide.

Association between resting and peak-ex BNP levels and outcome

During a mean follow-up of 1.8 ± 1.3 years, 104 prespecified events occurred (ie, seven deaths and 97 AVRs) in the whole cohort. Given that, from a clinical standpoint, the most challenging subset of patients is the one with asymptomatic severe AS, our analyses of outcomes were focused on this subset and the results for the whole cohort are presented in online supplementary table S1 and online supplementary figures S1 and S2. In the subset with severe AS (n=157 (74%); mean follow-up: 1.5 ± 1.2 years), 87 prespecified events occurred (ie, seven deaths and 78 AVRs) resulting in a cardiac event-free survival of $72 \pm 4\%$, $48 \pm 5\%$ and $39 \pm 5\%$ at 1, 2 and 3 years, respectively.

When using BNP variables in continuous format, both resting and peak-ex BNP levels were associated with a 1.5-fold increase in risk of events (for each 100 pg/mL increase) ($p<0.0001$; table 4). After adjustment for clinical, resting and exercise-stress echocardiographic data, resting and peak-ex BNP levels were associated with a 1.4-fold ($p=0.007$) and 1.4-fold ($p<0.0001$) increase in the risk of events, respectively (table 4, Model #1). The inclusion of δ BNP in place of peak-ex BNP also provided similar results (HR=3.4; $p<0.0001$; table 4, Model #2).

There was a significant graded relationship between tertiles of peak-ex BNP level and occurrence of events ($p<0.0001$; figure 2A; table 4). The analysis of tertiles of δ BNP provided similar results as tertiles of peak-ex BNP ($p<0.0001$; figure 2B; table 4). After multivariate adjustment (table 4, Model #1), T2 and T3 of peak-ex BNP remained associated with significant increase in risk of events. Further adjustment for resting BNP level provided similar results: tertiles of peak-ex BNP levels were associated with increased risk of events, whereas resting BNP was not (table 4, Model #2). Additional adjustment for exercise PHT or exercise workload did not change the results. The multivariate analysis including resting BNP expressed in tertiles and peak-ex BNP in continuous variable was consistent with results presented above (see online supplementary table S2). Furthermore, when we included both resting and peak-ex BNP in continuous format into the multivariate model, peak-ex BNP remained significantly associated with higher risk of events (HR=3.4; $p<0.0001$), whereas resting BNP did not.

Incremental prognostic value of peak-ex BNP

The analysis of the effect of peak-ex BNP according to median value of resting BNP (ie, resting BNP level $>$ or ≤ 48 pg/mL) showed that high peak-ex BNP dichotomised to median value in both subsets of resting BNP level (ie, $>$ or ≤ 38 pg/mL in patients with low resting BNP; and $>$ or ≤ 120 pg/mL in patients with high resting BNP), was associated with significantly higher

Table 4 Impact of BNP level on event-free survival in patients with severe AS (n=157)

	Individual		Multivariate models #1		Multivariate models #2	
	HR (95% CI)	p Value	HR (95% CI)	p Value	HR (95% CI)	p Value
Resting BNP level						
Resting BNP level (per 100 pg/mL increase)	1.5 (1.2 to 1.8)	<0.0001	1.4 (1.1 to 1.8)	0.007	–	–
Peak-exercise BNP level						
Peak-exercise BNP level (per 100 pg/mL increase)	1.5 (1.4 to 1.7)	<0.0001	1.4 (1.2 to 1.7)	<0.0001	–	–
Tertiles of peak-exercise BNP level*						
Tertile 1 (6 to 46 pg/mL)	1.0 (referent)	–	1.0 (referent)	–	1.0 (referent)	–
Tertile 2 (47 to 94 pg/mL)	2.6 (1.4 to 5.0)	0.0003	2.9 (1.5 to 5.7)	0.002	2.8 (1.4 to 5.7)	0.003
Tertile 3 (95 to 956 pg/mL)	6.1 (3.2 to 11.4)	<0.0001	5.3 (2.6 to 10.8)	<0.0001	5.0 (2.3 to 11.0)	<0.0001
Resting BNP level (per 100 pg/mL increase)	1.5 (1.2 to 1.8)	<0.0001	–	–	1.1 (0.7 to 1.5)	0.75
Δ Of BNP levels						
Absolute difference of BNP levels (per 100 pg/mL increase from rest)	3.6 (2.6 to 4.9)	<0.0001	–	–	3.4 (2.2 to 5.3)	<0.0001
Resting BNP level (per 100 pg/mL increase)	1.5 (1.2 to 1.8)	<0.0001	–	–	1.0 (0.7 to 1.3)	0.95
Tertiles of Δ BNP levels						
Tertile 1 (–54 to 4)	1.0 (referent)	–	1.0 (referent)	–	1.0 (referent)	–
Tertile 2 (4 to 20)	2.5 (1.3 to 5.7)	0.0006	3.1 (1.4 to 6.9)	0.006	3.0 (1.2 to 6.2)	0.008
Tertile 3 (20 to 337)	8.4 (4.1 to 17.1)	<0.0001	7.7 (3.4 to 17.4)	<0.0001	7.1 (3.1 to 16.1)	<0.0001
Resting BNP level (per 100 pg/mL increase)	1.5 (1.2 to 1.8)	<0.0001	–	–	1.2 (0.9 to 1.6)	0.12

Models #1 included age, gender, mean transvalvular gradient, valvulo-arterial impedance, indexed left atrial area, and exercise-induced increases in heart rate, mean transvalvular gradient, and valvulo-arterial impedance; Models #2 were Models #1 plus resting BNP level.

*The boundaries of the peak-exercise BNP tertiles in the severe AS are slightly different from those in the whole cohort presented in tables 1 and 2.

AS, aortic stenosis; BNP, B-type natriuretic peptide.

rate of events in both subsets of resting BNP level ($p < 0.0001$; figure 3). Among patients with resting BNP level ≤ 48 pg/mL, peak-ex BNP > 38 pg/mL was associated with significantly higher risk of events (HR=3.1, 95% CI 1.2 to 7.0, $p = 0.02$) after adjustment for age, gender, mean gradient, indexed LA area, and exercise-induced increase in heart rate and mean gradient.

The addition of peak-ex BNP level in the multivariate model including resting BNP (Model #2, table 4) significantly improved the predictive value of the model: the two-category NRI for 1-year events was 0.17 (95% CI 0.02 to 0.33; $p = 0.03$) and the three-category NRI was 0.25 (95% CI 0.04 to 0.46; $p = 0.02$) (see online supplementary tables S3 and S4). Furthermore, in the ROC curve analyses, the AUC to predict 1-year events was higher with peak-ex BNP compared with resting BNP (73 ± 5 vs $61 \pm 5\%$; $p < 0.0001$). The best cut-point value was 86 pg/mL for peak-ex BNP and 58 pg/mL for resting BNP. In multivariate Cox analysis, peak-ex BNP level > 86 pg/mL was significantly associated with increased risk of events (HR=3.5; $p = 0.01$) whereas resting BNP > 58 pg/mL was not (HR=1.1; $p = 0.86$) (see online supplementary table S5).

DISCUSSION

The main findings of this study are: (1) Peak-ex BNP is a powerful predictor of outcome and provides important incremental prognostic value beyond what is achieved by demographic, and echocardiographic data, as well as resting BNP level. (2) This relationship remains significant in the subsets of patients with low resting BNP.

BNP response to exercise

Resting blood level of BNP is increased in various cardiac diseases as compared with healthy subjects and is associated with higher LV pressure or volume overload.²⁴ In patients with AS, resting BNP level is useful to enhance risk stratification in AS patients.^{13–15 24 25} In response to exercise, BNP level may increase both in normal healthy subjects²⁶ and patients with

cardiovascular diseases.^{16–19} In the present study of asymptomatic AS patients, we showed a significant increase in BNP during exercise. The overall correlation between resting and peak-ex BNP levels was strong but with important inter-individual variability in the BNP response to exercise; that is, some patients with low resting level of BNP had marked increase in BNP during exercise, whereas others had no significant change. Large increase in BNP during exercise may be a surrogate marker for the adverse repercussions of the haemodynamic burden as well as of the concomitant diseases on the cardiac chambers and may therefore help to identify patients who are at a more advanced stage of the disease at the valvular, arterial and/or ventricular levels. This hypothesis is supported by the independent association we found between peak-ex BNP level and (i) resting AS severity, (ii) global (valvulo-arterial) LV haemodynamic burden and (iii) LA enlargement.

Peak-ex BNP and outcome

In this large bi-centric prospective series of patients, peak-ex BNP level was significantly associated with higher risk of events, even after adjustment for clinical, resting and peak-ex echocardiographic data and resting BNP level. The results of multivariate analyses clearly demonstrated that peak-ex BNP provides incremental prognostic value beyond clinical and resting variables. Furthermore, this incremental value was also observed in the subset of patients with low BNP at rest. Hence, peak-ex BNP allows the cardiologist to re-stratify patients who would be identified as low risk otherwise.

Clinical implications

The present findings suggest that measurement of BNP during exercise testing or exercise-stress echocardiography may be useful to enhance risk stratification and thus the clinical management of asymptomatic patients with severe AS. Patients exhibiting a marked increase in BNP during exercise are at much higher risk for adverse events in the short-term and thus require

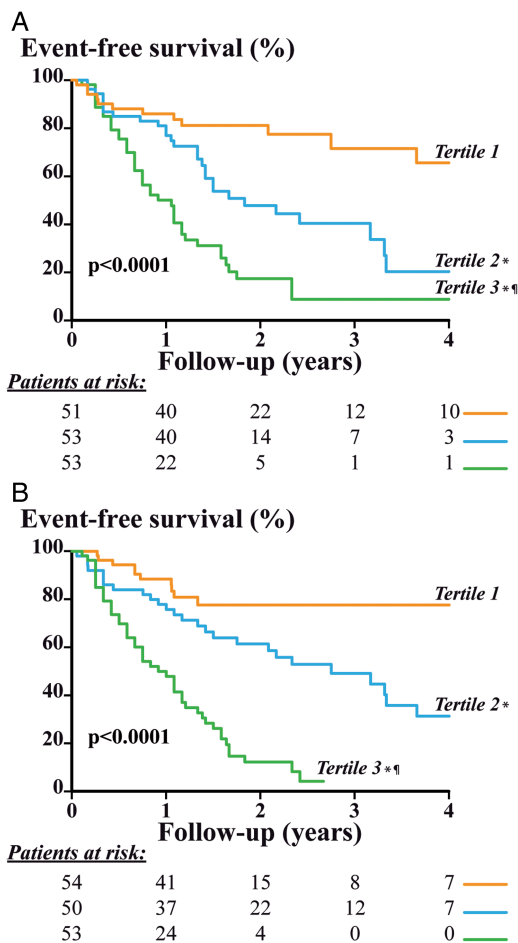


Figure 2 Comparison of the event-free survival curves for tertiles of peak-exercise B-type natriuretic peptide (BNP) level and tertiles of δ BNP levels in patients with severe aortic stenosis (AS) (n=157). This figure shows the event-free survival curves for the composite end-point of death or aortic valve replacement in patients with severe AS (n=157) according to tertiles of peak-exercise BNP level (A) and tertiles of δ BNP levels (B). The symbols indicate the significant differences between groups: * $p < 0.05$ versus 'Tertile 1'; $\dagger p < 0.05$ versus 'Tertile 2'. The numbers at the bottom of the graph represent the number of patients at risk at each follow-up year. The p value is that of the log-rank test.

more frequent and closer clinical and echocardiographic follow-up.

However, BNP levels measured at rest or during exercise are not specific to AS severity alone but rather reflect the total burden of disease(s) on the LV and other cardiac chambers. They should thus be interpreted in light of the parameters more specifically reflecting AS severity as well as arterial and global loads.

It is often technically difficult to obtain valid exercise haemodynamic data in all patients, and a circulating biomarker such as BNP could thus be highly valuable in this context. The measurement of BNP indeed has the advantage of being easy, fast and reproducible and it can be combined with exercise-stress echocardiography or with standard treadmill exercise test. Further studies are, however, needed to determine if the present findings obtained in the semisupine position can be transposed to the setting of upright exercise test.

Strengths and limitations

The primary end-point was defined as the composite of AVR and death and was, in large part, driven by the former event (87 AVRs and seven deaths in the severe AS subset). AVR may

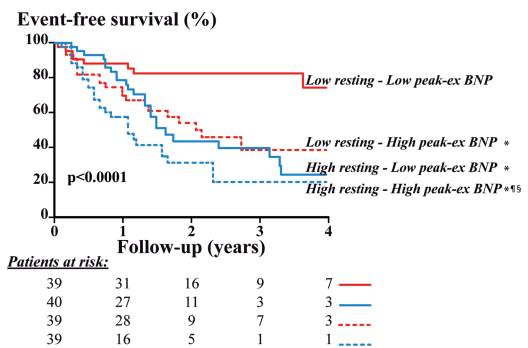


Figure 3 Comparison of the event-free survival curves for median peak-exercise B-type natriuretic peptide (BNP) level in the subsets of patients with high and low resting BNP level in patients with severe aortic stenosis (n=157). This figure shows the event-free survival curves for the composite end-point of death or aortic valve replacement in the subsets of patients with low versus high resting BNP level (red vs blue curves, respectively), according to low versus high peak-exercise BNP (full vs dotted lines, respectively). The symbols indicate the significant difference between groups: * $p < 0.05$ versus 'Low resting—Low peak-exercise BNP level'; $\dagger p < 0.05$ versus 'Low resting—High peak-exercise BNP level'; $\S p < 0.05$ versus 'High resting—Low peak-exercise BNP level'. The numbers at the bottom of the graph represent the number of patients at risk at each follow-up year. The p value is that of the log-rank test.

be influenced by physician's perception and interpretation of disease severity and patient's symptomatic status. However, this study included only patients who were 'truly' asymptomatic at baseline (ie, with normal exercise test). The treating physicians were blinded to BNP data and only AVR motivated by the development of symptoms or LV systolic dysfunction was classified as event in the composite end-point. Furthermore, all multivariate models were adjusted for the baseline stenosis severity (ie, mean gradient at rest and during exercise) and peak-ex BNP remained an independent predictor of events despite this adjustment.

Key messages

What is known on this subject?

Some studies have reported that dosage of resting plasma B-type natriuretic peptide (BNP), exercise testing and exercise-stress echocardiography may be useful to predict outcomes and therefore improve risk stratification of patients with asymptomatic aortic stenosis (AS).

What might this study add?

The results of this study suggest that BNP measured at peak-exercise provides significant incremental prognostic value beyond what is achieved by demographic data, resting and exercise echocardiographic data, as well as resting BNP level. These findings provide strong impetus for systematic measurement of BNP during exercise test in the AS population.

How might this impact on clinical practice?

The findings of this study suggest that asymptomatic patients with severe AS who display a marked increase in BNP during exercise could be at higher risk of events. Measurement of BNP during exercise may thus be useful to enhance risk stratification and adjust the timing of clinical and echocardiographic follow-up in these patients.

There were not enough patients to perform a separate analysis of mortality.

Due to the variability of the cut-off values of BNP reported in the literature to predict outcomes, we elected to use continuous variables or tertiles of BNP. Given the graded increase in the risk of adverse events reported in the present study, it would be misleading to propose a precise cut-point value for the prediction of outcome.

Acknowledgements We thank Isabelle Fortin, Jocelyn Beauchemin, Martine Parent and Carmine Cellentano for their help in data collection and management.

Contributors RC, JM, PL and PP designed the study and prepared the manuscript. RC performed data and statistical analyses. RC and JM wrote the first draft of the manuscript. RD and ZH participated in the recruitment of patients. PL and PP supervised the acquisition and analyses of echocardiographic images. All authors reviewed the manuscript and contributed to scientific content. PL and PP validated the final version and are responsible for the overall content.

Funding This work was supported, in part, by grant MOP-114997 from Canadian Institutes of Health Research (CIHR), Ottawa, Ontario, Canada, and a grant from the Foundation of the Quebec Heart and Lung Institute.

Competing interests RC was supported by a studentship grant of International Chair of Cardiometabolic Risk, Québec, Québec, Canada. JM is research associate from the F.R.S-FNRS, Brussels, Belgium, and received grants from the Fonds Léon Fredericq, Liège, Belgium. MA is a research scholar from the Fonds de recherche en santé du Québec (FRSQ), Montreal, Québec, Canada. PP holds the Canada Research Chair in Valvular Heart Diseases, CIHR.

Patient consent Obtained.

Ethics approval Ethics Committees of the Quebec Heart and Lung Institute and CHU Sart Tilman.

Provenance and peer review Not commissioned; externally peer reviewed.

REFERENCES

- Vahanian A, Alfieri O, Andreotti F, et al. Guidelines on the management of valvular heart disease (version 2012). Joint task force on the management of valvular heart disease of the European Society of Cardiology (ESC); European Association for Cardio-Thoracic Surgery (EACTS). *Eur Heart J* 2012;33:2451–96.
- Nishimura RA, Otto CM, Bonow RO, et al. 2014 AHA/ACC guideline for the management of patients with valvular heart disease. *J Am Coll Cardiol* 2014;63:2438–88.
- Otto CM, Burwash IG, Legget ME, et al. Prospective study of asymptomatic valvular aortic stenosis. Clinical, echocardiographic, and exercise predictors of outcome. *Circulation* 1997;95:2262–70.
- Malouf J, Le TT, Pellikka P, et al. Aortic valve stenosis in community medical practice: determinants of outcome and implications for aortic valve replacement. *J Thorac Cardiovasc Surg* 2012;144:1421–7.
- Rosenhek R, Binder T, Porenta G, et al. Predictors of outcome in severe, asymptomatic aortic stenosis. *N Engl J Med* 2000;343:611–17.
- Kang DH, Park SJ, Rim JH, et al. Early surgery versus conventional treatment in asymptomatic very severe aortic stenosis. *Circulation* 2010;121:1502–9.
- Carabello BA. Aortic valve replacement should be operated on before symptom onset. *Circulation* 2012;126:112–17.
- Shah PK. Severe aortic stenosis should not be operated on before symptom onset. *Circulation* 2012;126:118–25.
- Picano E, Pibarot P, Lancellotti P, et al. The emerging role of exercise testing and stress echocardiography in valvular heart disease. *J Am Coll Cardiol* 2009;54:2251–60.
- Lancellotti P, Lebois F, Simon M, et al. Prognostic importance of quantitative exercise Doppler echocardiography in asymptomatic valvular aortic stenosis. *Circulation* 2005;112:1377–82.
- Maréchaux S, Hachicha Z, Bellouin A, et al. Usefulness of exercise stress echocardiography for risk stratification of true asymptomatic patients with aortic valve stenosis. *Eur Heart J* 2010;31:1390–7.
- Lancellotti P, Magne J, Donal E, et al. Determinants and prognostic significance of exercise pulmonary hypertension in asymptomatic severe aortic stenosis. *Circulation* 2012;126:851–9.
- Bergler-Klein J, Klaar U, Heger M, et al. Natriuretic peptides predict symptom-free survival and postoperative outcome in severe aortic stenosis. *Circulation* 2004;109:2302–8.
- Lim P, Monin JL, Monchi M, et al. Predictors of outcome in patients with severe aortic stenosis and normal left ventricular function: role of B-type natriuretic peptide. *Eur Heart J* 2004;25:2048–53.
- Lancellotti P, Moonen M, Magne J, et al. Prognostic effect of long-axis left ventricular dysfunction and B-type natriuretic peptide levels in asymptomatic aortic stenosis. *Am J Cardiol* 2010;105:383–8.
- Foote RS, Pearlman JD, Siegel AH, et al. Detection of exercise-induced ischemia by changes in B-type natriuretic peptides. *J Am Coll Cardiol* 2004;44:1980–7.
- Bergeron S, Moller JE, Bailey KR, et al. Exertional changes in circulating cardiac natriuretic peptides in patients with suggested coronary artery disease. *J Am Soc Echocardiogr* 2006;19:772–6.
- Kato M, Kinugawa T, Ogino K, et al. Augmented response in plasma brain natriuretic peptide to dynamic exercise in patients with left ventricular dysfunction and congestive heart failure. *J Intern Med* 2000;248:309–15.
- Magne J, Mahjoub H, Pibarot P, et al. Prognostic importance of exercise brain natriuretic peptide in asymptomatic degenerative mitral regurgitation. *Eur J Heart Fail* 2012;14:1293–302.
- Lang RM, Bierig M, Devereux RB, et al. Recommendations for chamber quantification: a report from the American Society of Echocardiography's Guidelines and Standards Committee and the Chamber Quantification Writing Group, developed in conjunction with the European Association of Echocardiography, a branch of the European Society of Cardiology. *J Am Soc Echocardiogr* 2005;18:1440–63.
- Hachicha Z, Dumesnil JG, Pibarot P. Usefulness of the valvuloarterial impedance to predict adverse outcome in asymptomatic aortic stenosis. *J Am Coll Cardiol* 2009;54:1003–11.
- Pencina MJ, D'Agostino RB Sr, D'Agostino RB Jr, et al. Evaluating the added predictive ability of a new marker: from area under the ROC curve to reclassification and beyond. *Stat Med* 2008;27:157–72.
- Pencina MJ, D'Agostino RB Sr, Steyerberg EW. Extensions of net reclassification improvement calculations to measure usefulness of new biomarkers. *Stat Med* 2011;30:11–21.
- Steadman CD, Ray S, Ng LL, et al. Natriuretic peptides in common valvular heart disease. *J Am Coll Cardiol* 2010;55:2034–48.
- Gerber IL, Stewart RA, Legget ME, et al. Increased plasma natriuretic peptide levels reflect symptom onset in aortic stenosis. *Circulation* 2003;107:1884–90.
- Huang WS, Lee MS, Perng HW, et al. Circulating brain natriuretic peptide values in healthy men before and after exercise. *Metabolism* 2002;51:1423–6.

Online Supplementary Materials

for the following *Heart* article

TITLE: Prognostic Value of Plasma B-Type Natriuretic Peptide Levels After Exercise in Patients with Severe Asymptomatic Aortic Stenosis

AUTHORS: Romain Capoulade*, PhD¹, Julien Magne*, PhD², Raluca Dulgheru, MD², Zeineb Hachicha, MD¹, Jean G. Dumesnil, MD, FRCPC, FACC¹, Kim O'Connor, MD¹, Marie Arsenault, MD¹, Sébastien Bergeron, MD¹, Luc A. Pierard, MD², Patrizio Lancellotti, MD², Philippe Pibarot, DVM, PhD, FACC, FAHA, FESC¹.

¹ Institut Universitaire de Cardiologie et de Pneumologie de Québec / Québec Heart & Lung Institute, Laval University, Québec city, Québec, Canada.

² University of Liège Hospital, GIGA Cardiovascular Sciences, Heart Valve Clinic, Department of Cardiology, CHU Sart Tilman, Liège, Belgium.

*Both authors have equally contributed to the paper

SUPPLEMENTARY FIGURE LEGENDS

SUPPLEMENTARY FIGURE S1: Comparison of the event-free survival curves for tertiles of peak-exercise BNP level and tertiles of delta BNP levels in the whole cohort (n=211).

Caption: This figure shows the event-free survival curves for the composite end-point of death or aortic valve replacement according to tertiles of peak exercise BNP level (Panel A) and tertiles of delta BNP levels (Panel B) in the whole cohort (n=211). The symbols indicate the significant differences between groups: * p<0.05 versus “Tertile1”; ¶ p<0.05 versus “Tertile2”. The numbers at the bottom of the graph represent the number of patients at risk at each follow-up year. The p value is that of the log-rank test.

SUPPLEMENTARY FIGURE S2: Comparison of the event-free survival curves for median peak-exercise BNP level in the subsets of patients with high and low resting BNP level in the whole cohort (n=211).

Caption: This figure shows the event-free survival curves in the whole cohort (n=211) for the composite end-point of death or aortic valve replacement in the subset of patients with low vs. high resting BNP level (full vs. dotted lines, respectively), according to low vs. high peak-exercise BNP (red vs. blue curves, respectively). The symbols indicate the significant difference between groups: * p<0.05 versus “Low resting – Low peak-exercise BNP level”; ¶ p<0.05 versus “Low resting – High peak-exercise BNP level”; § p<0.05 versus “High resting – Low peak-exercise BNP level”. The numbers at the bottom of the graph represent the number of patients at risk at each follow-up year. The p value is that of the log-rank test.

SUPPLEMENTARY TABLE S1: Impact of BNP Level on Event-Free Survival in the Whole Cohort (n=211)

	Individual		Multivariate Models #1		Multivariate Models #2	
	HR (95% CI)	p value	HR (95% CI)	p value	HR (95% CI)	p value
Resting BNP level						
<i>Resting BNP level (per 100 pg/ml increase)</i>	1.6 (1.3-1.9)	<0.0001	1.4 (1.1-1.7)	0.004	–	–
Peak-exercise BNP level						
<i>Peak-exercise BNP level (per 100 pg/ml increase)</i>	1.6 (1.4-1.8)	<0.0001	1.4 (1.2-1.6)	<0.0001	–	–
Tertiles of peak-exercise BNP level						
<i>Tertile 1 (6 to 42 pg/ml)</i>	1.0 (referent)	–	1.0 (referent)	–	1.0 (referent)	–
<i>Tertile 2 (43 to 92 pg/ml)</i>	2.6 (1.5-4.7)	0.0007	2.3 (1.3-4.4)	0.005	2.3 (1.3-4.3)	0.007
<i>Tertile 3 (92 to 956 pg/ml)</i>	5.9 (3.5-10.5)	<0.0001	4.8 (2.7-9.0)	<0.0001	4.5 (2.3-9.0)	<0.0001
<i>Resting BNP level (per 100 pg/ml increase)</i>	1.6 (1.3-1.9)	<0.0001	–	–	1.1 (0.8-1.4)	0.63
Delta of BNP levels						
<i>Absolute difference of BNP levels (per 100 pg/ml increase from rest)</i>	3.4 (2.5-4.7)	<0.0001	–	–	2.7 (1.7-4.1)	<0.0001
<i>Resting BNP level (per 100 pg/ml increase)</i>	1.6 (1.3-1.9)	<0.0001	–	–	1.1 (0.8-1.3)	0.69

Tertiles of delta BNP levels						
<i>Tertile 1</i> (-54 to 3)	1.0 (referent)	–	1.0 (referent)	–	1.0 (referent)	–
<i>Tertile 2</i> (4 to 19)	2.7 (1.5-5.1)	0.0009	2.7 (1.4-5.6)	0.002	2.7 (1.4-5.5)	0.002
<i>Tertile 3</i> (19 to 337)	6.4 (3.6-12.1)	<0.0001	5.9 (3.1-12.1)	<0.0001	5.3 (2.7-11.0)	<0.0001
<i>Resting BNP level</i> (per 100 pg/ml increase)	1.6 (1.3-1.9)	<0.0001	–	–	1.2 (0.9-1.5)	0.10

Legend: BNP: B-type natriuretic peptides; HR: hazard ratio; CI: confidence interval. Models #1 included age, gender, mean transvalvular gradient, valvulo-arterial impedance, indexed left atrial area, and exercise-induced increase in heart rate, mean transvalvular gradient, and valvulo-arterial impedance; Models #2 were Models #1 plus resting BNP level.

SUPPLEMENTARY TABLE S2: Impact of tertiles of resting BNP Level on Event-Free Survival in Severe AS patients (n=157; 74%)

	Individual		Multivariate Model #1		Multivariate Model #2	
	HR (95% CI)	p value	HR (95% CI)	p value	HR (95% CI)	p value
Tertiles of resting BNP level						
<i>Tertile 1</i> (4 to 35 pg/ml)	1.0 (referent)	–	1.0 (referent)	–	1.0 (referent)	–
<i>Tertile 2</i> (36 to 67 pg/ml)	1.8 (1.0-3.3)	0.06	1.8 (0.9-3.4)	0.08	1.6 (0.8-3.0)	0.16
<i>Tertile 3</i> (68 to 843 pg/ml)	3.7 (2.1-6.6)	<0.0001	3.0 (1.6-6.0)	0.001	2.0 (1.0-4.2)	0.06
<i>Peak-ex BNP level</i> (per 100 pg/ml increase)	1.5 (1.4-1.7)	<0.0001	–	–	1.4 (1.1-1.6)	0.002

Legend: BNP: B-type natriuretic peptides; HR: hazard ratio; CI: confidence interval. Model #1 included age, gender, mean transvalvular gradient, valvulo-arterial impedance, indexed left atrial area, and exercise-induced increase in heart rate, mean transvalvular gradient, and valvulo-arterial impedance; Model #2 was Model #1 plus resting BNP level.

SUPPLEMENTARY TABLE S3: Reclassification of Patients with Severe AS (n=157) for 1-Year Events using Model with Peak-Ex BNP in a 2-Category Net Reclassification Improvement Analysis

		Model with established risk factors and peak-ex BNP	
		<28% Risk	≥28% Risk
Participants with events at 1 year (n=42)			
Model with established risk factors	<28% Risk	10	4
	≥28% Risk	4	24
Participants without events at 1 year (n=92)			
Model with established risk factors	<28% Risk	60	1
	≥28% Risk	17	14

Legend: BNP: B-type natriuretic peptides; peak-ex: peak-exercise; NRI: net reclassification improvement. Established risk factors included age, gender, mean transvalvular gradient, valvulo-arterial impedance, indexed left atrial area, and exercise-induced changes in heart rate, mean transvalvular gradient and valvulo-arterial impedance.

SUPPLEMENTARY TABLE S4: Reclassification of Patients with Severe AS (n=157) for 1-Year Events using Model with Peak-Ex BNP in a 3-Category Net Reclassification Improvement Analysis

		Model with established risk factors and peak-ex BNP		
		<19% Risk	19-35% Risk	≥35% Risk
Participants with events at 1 year (n=42)				
Model with established risk factors	<19% Risk	6	0	1
	19-35% Risk	0	5	5
	≥35% Risk	1	5	19
Participants without events at 1 year (n=92)				
Model with established risk factors	<19% Risk	31	6	0
	19-35% Risk	19	15	1
	≥35% Risk	1	10	9

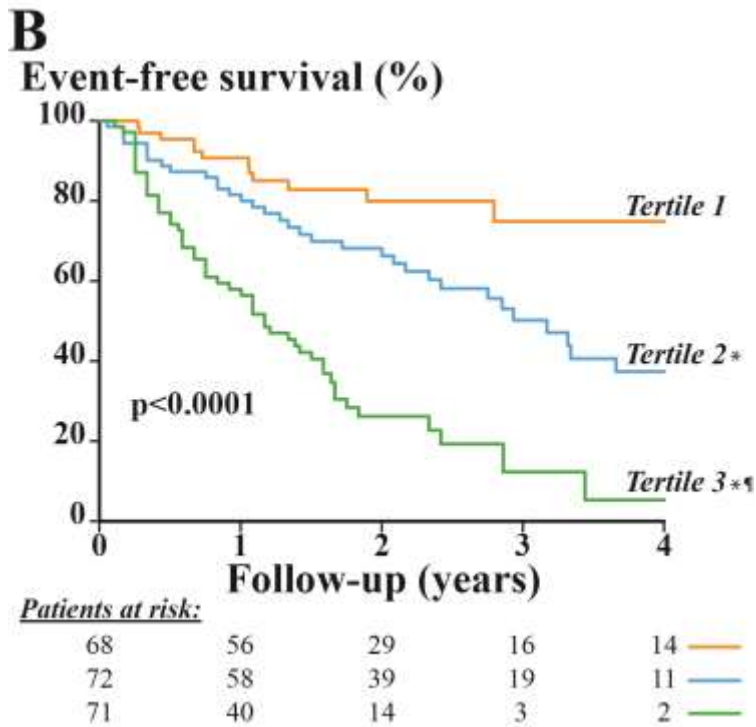
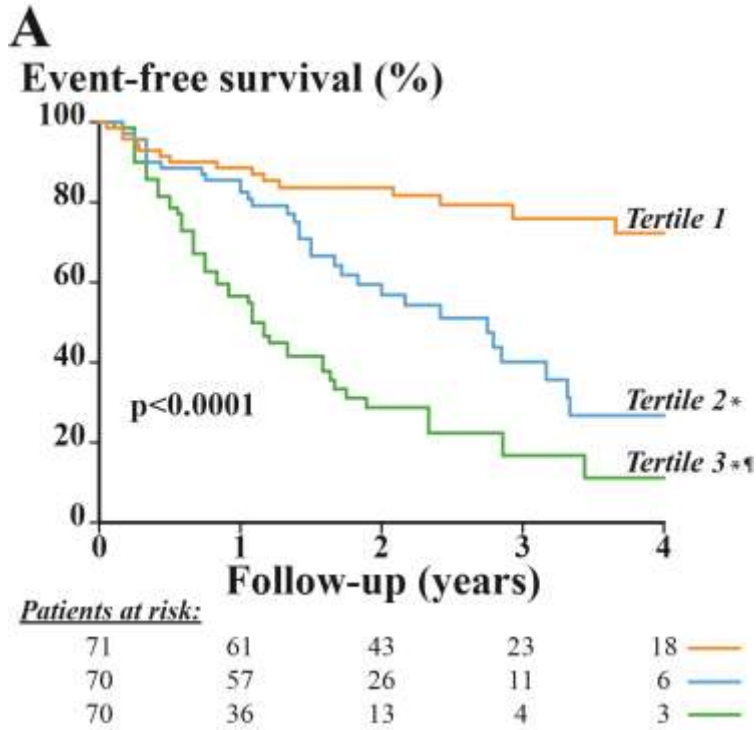
Legend: BNP: B-type natriuretic peptides; peak-ex: peak-exercise; NRI: net reclassification improvement. Established risk factors included age, gender, mean transvalvular gradient, valvulo-arterial impedance, indexed left atrial area, and exercise-induced changes in heart rate, mean transvalvular gradient, and valvulo-arterial impedance.

SUPPLEMENTARY TABLE S5: Impact of the best cut-point values for resting and peak-ex BNP Levels on Event-Free Survival in Patients with Severe AS (n=157)

	Individual		Multivariate Model	
	HR (95% CI)	p value	HR (95% CI)	p value
Best cut-point values				
<i>Resting BNP level</i> <i>> 58 pg/ml</i>	3.0 (1.9-4.7)	<0.0001	1.1 (0.4-2.7)	0.86
<i>Peak-exercise BNP level</i> <i>> 86 pg/ml</i>	4.1 (2.6-6.5)	<0.0001	3.5 (1.3-9.2)	0.01

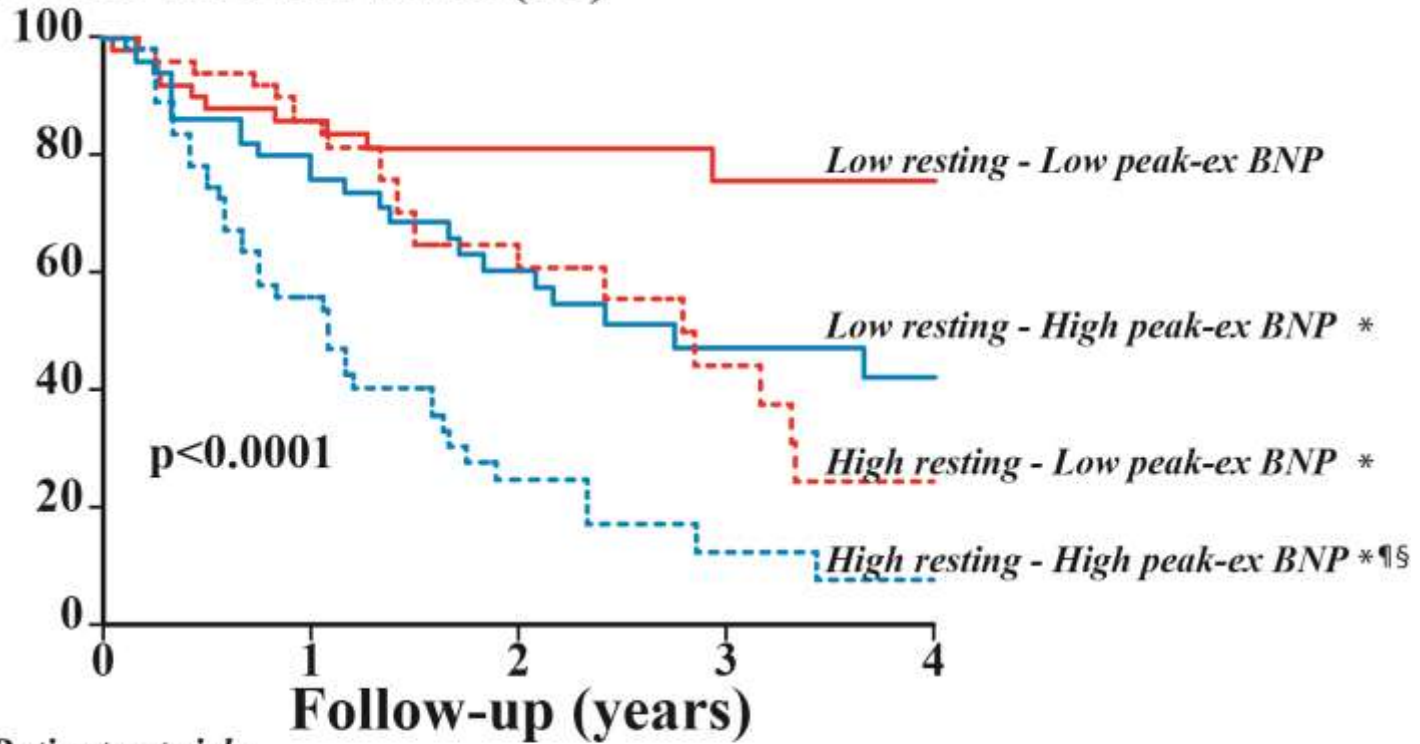
Legend: BNP: B-type natriuretic peptides; HR: hazard ratio; CI: confidence interval. Multivariate model included age, gender, mean transvalvular gradient, valvulo-arterial impedance, indexed left atrial area, and exercise-induced increase in heart rate, mean transvalvular gradient, and valvulo-arterial impedance.

SUPPLEMENTARY FIGURE S1



SUPPLEMENTARY FIGURE S2

Event-free survival (%)



Patients at risk:

52	42	30	14	12	—
52	40	23	11	7	—
51	44	19	9	5	- - -
56	28	10	4	3	- - -