



OPEN ACCESS

ORIGINAL ARTICLE

# Transthoracic echocardiography for the evaluation of children and adolescents with suspected or confirmed pulmonary hypertension. Expert consensus statement on the diagnosis and treatment of paediatric pulmonary hypertension. The European Paediatric Pulmonary Vascular Disease Network, endorsed by ISHLT and DGPK

Martin Koestenberger,<sup>1</sup> Christian Apitz,<sup>2</sup> Hashim Abdul-Khaliq,<sup>3</sup> Georg Hansmann<sup>4</sup>

For numbered affiliations see end of article.

## Correspondence to

Prof. Dr Martin Koestenberger, Department of Pediatrics, Medical University Graz, Auenbruggerplatz 34/2, Graz A-8036, Austria; martin.koestenberger@medunigraz.at

*This article is a product of the writing group of the European Paediatric Pulmonary Vascular Disease (PVD) Network (Writing Group Chair: G. Hansmann, Writing Group Co-Chair C. Apitz). ISHLT, International Society of Heart and Lung Transplantation. DGPK, German Society of Paediatric Cardiology.*

Received 19 November 2014  
Revised 22 December 2014  
Accepted 23 December 2014

## ABSTRACT

Transthoracic echocardiography (TTE) is a useful method for non-invasive screening of patients at risk of pulmonary hypertension (PH). Since TTE often serves as the initial study before invasive cardiac catheterisation, misinterpretation of TTE variables may lead to missed or delayed diagnosis with devastating consequences for the patients, or unnecessary invasive diagnostics that have inheriting risks. Due to the heterogeneous anatomy in congenital heart disease, particularly the assessment of myocardial function in children with PH is challenging. Here, we present recommendations on the use of TTE in the screening, diagnosis and follow-up of patients with PH, and discuss the limitations of this non-invasive imaging technique. This expert consensus statement focuses on key TTE variables used to determine the pressure in the pulmonary artery, myocardial contractility and systolic and diastolic function of the RV and LV. A particular focus is on the TTE assessment of RV function and geometry. According to the published data on the application of TTE in PH in childhood, we suggest a structured approach for non-invasive assessment of pulmonary artery pressure and myocardial function that may help to identify patients with early ventricular deterioration and their response to advanced pharmacotherapy. In addition to clinical and biochemical markers, serial examination of patients with PH using a standardised TTE approach, determining conventional and several more novel echocardiographic variables may allow early diagnosis and treatment, better recognition of disease progression and guide tailored therapy.

classification 2013<sup>2</sup>) is usually a severe, refractory, progressive and lifelong disease.

Transthoracic echocardiography (TTE) is the most important, most accessible non-invasive diagnostic procedure not only for the initial confirmation of suspected PH but also for screening children at increased risk for PH development and possible systolic RV dysfunction. TTE is also important for the clinical follow-up after change of treatment or clinical condition. Due to variable body size and different causal pathophysiology, TTE variables used for the assessment of paediatric PH can have different reference ranges and variable impact on the accuracy of diagnosis in children versus adults with PH.<sup>3</sup>

Here, we review the principles and applications of TTE in patients with PH, thereby focusing on children with pulmonary hypertensive vascular disease, and provide practical recommendations for its use. We emphasise non-invasive variables that may provide insight into the pathophysiology and course of PH along with invasive haemodynamic assessment. Combining commonly used and novel TTE variables and modalities to assess RV function and geometry in paediatric PH may help the clinician avoid some of the pitfalls of the TTE examination, especially the overreliance on the Doppler pressure estimation in the initial diagnosis and serial assessment of children with PH. In general, overreliance on any single TTE variable, and especially RV and PA pressure estimation, detracts from the overall diagnostic validity of the TTE examination.

## INTRODUCTION

Pulmonary hypertension (PH) in children is commonly characterised by the presence of precapillary PH due to increased pulmonary vascular resistance (PVR) and impaired blood flow just proximal to the pulmonary capillaries.<sup>1</sup> Chronically elevated PVR leads to RV pressure overload and ultimately to RV failure. In children, pulmonary arterial hypertension (PAH) (ie, group 1 PAH of the Nice

## METHODS

The recommendations given in [table 1](#) relate to the grading system currently suggested by the European Society of Cardiology (ESC) and the American Heart Association (AHA), and was based on paediatric data only (class, level of evidence). The grading and voting process within the writing group is outlined in the executive summary of this online supplement.



CrossMark

**To cite:** Koestenberger M, Apitz C, Abdul-Khaliq H, et al. *Heart* 2016;**102**:ii14–ii22.

**Table 1** Recommendations on transthoracic echocardiography (TTE) in paediatric pulmonary hypertension

Recommendation	COR	LOE
1. Following the initial diagnostic evaluation for pulmonary hypertension (PH), TTE should be performed in 3–6 months' intervals or earlier when the clinical condition or medication changes	I	C
2. An echo study of a child with a suspected PH should include the assessment of the following TTE variables:		
2.1. Estimation of the systolic pulmonary artery pressure (PAP) by estimating RV systolic pressure (RVSP) through the measurement of the velocity of the TR jet by CW-Doppler <sup>10 11</sup>	I	B
2.2. Estimation of mean PAP and end-diastolic PAP through CW-Doppler of the pulmonary regurgitation jet <sup>11 12</sup>	IIa	C
2.3. RV longitudinal systolic function (tricuspid annular plane systolic excursion) <sup>17 18</sup>	I	B
2.4. RV strain and strain rate measurements <sup>20 21 23</sup>	IIb	C
2.5. RV volumes by 3D echocardiography <sup>28</sup>	IIb	C
2.6. RV systolic to diastolic duration ratio (CW-Doppler, TR jet) <sup>31 32</sup>	IIb	C
2.7. Tissue Doppler velocities (LV, septal, RV) <sup>34 36</sup>	IIa	B
2.8. RV/LV diameter ratio <sup>39</sup>	IIa	C
2.9. PA acceleration time (PAAT) <sup>41</sup>	IIb	C
3. The presence of a pericardial effusion by TTE is prognostic and indicates poorer survival in adults with PH. PE develops frequently in patients with PAH. Currently, no data on the significance of PE in paediatric PH are available	IIb	C
4. Right atrial (RA) enlargement plus interatrial septal bowing from right to left indicates poor RV compliance or increased mean RA pressure in adults. Currently, no data on RA size enlargement in paediatric PAH are available	IIb	C
5. TTE is useful method to screen for increased PAP	I	B
6. TTE cannot establish the definite diagnosis of PH and cannot classify in PH subgroups, and is not sufficient to initiate a targeted therapy	I	C

COR, classes of recommendations; CW, continuous wave; PAH, pulmonary arterial hypertension; LOE, levels of evidence; PE, pericardial effusion; TR, tricuspid regurgitation.

### Echocardiographic features of RV in paediatric PH

An echocardiographic study of a child with a suspected/confirmed PH should include the assessment of the following variables: estimation of the systolic pulmonary artery pressure (PAP), by estimating RV systolic pressure (RVSP) through the measurement of the velocity of the tricuspid regurgitation (TR) jet by continuous wave (CW)-Doppler (figure 1A), the estimation of mean PAP and end-diastolic PAP through CW-Doppler velocity measurement of the pulmonary regurgitation (PR) jet in the parasternal short-axis view (figure 1B), RV longitudinal systolic function determination (figure 2A), RV strain and strain rate measurements (most commonly longitudinal strain from apical four-chamber view), RV volume determination by 3D echocardiography, measurement of the RV systolic to diastolic duration ratio (TR in apical four-chamber view; figure 2B), determine tissue Doppler velocities (figure 2C), measurement of the RV/LV diameter ratio and eccentricity index (figure 3A), and determination of the PA acceleration time (PAAT) (figure 3B).

The abnormal pressure elevation in the RV leads to flattening of the interventricular septum with LV appearing D-shaped with reduced volumes but preserved global systolic function.<sup>3</sup> Of course, standard evaluation of the left heart, including LV systolic function (LVEF, FS), longitudinal systolic LV function (mitral annular plane systolic excursion (MAPSE)), and inflow and outflow Doppler of all valves, should complete a comprehensive TTE study for PH to unravel concomitant LV dysfunction and/or adverse RV–LV interactions.

The validity of transthoracic RV echocardiography is still limited in paediatric clinical practice by the lack of standardisation. Current recommendations on echocardiographic evaluation of the paediatric right heart may help to overcome this problem.<sup>4</sup> A list of the main diagnostic investigations, and main advantages and disadvantages of these echocardiographic variables, is provided in tables 2 and 3.

The presence of a pericardial effusion (PE) found by TTE is prognostic and indicates poorer survival in patients with PH.<sup>5</sup> In adult patients with no PE at the diagnosis 'PH', the appearance of a new moderate or larger PE has been shown to be

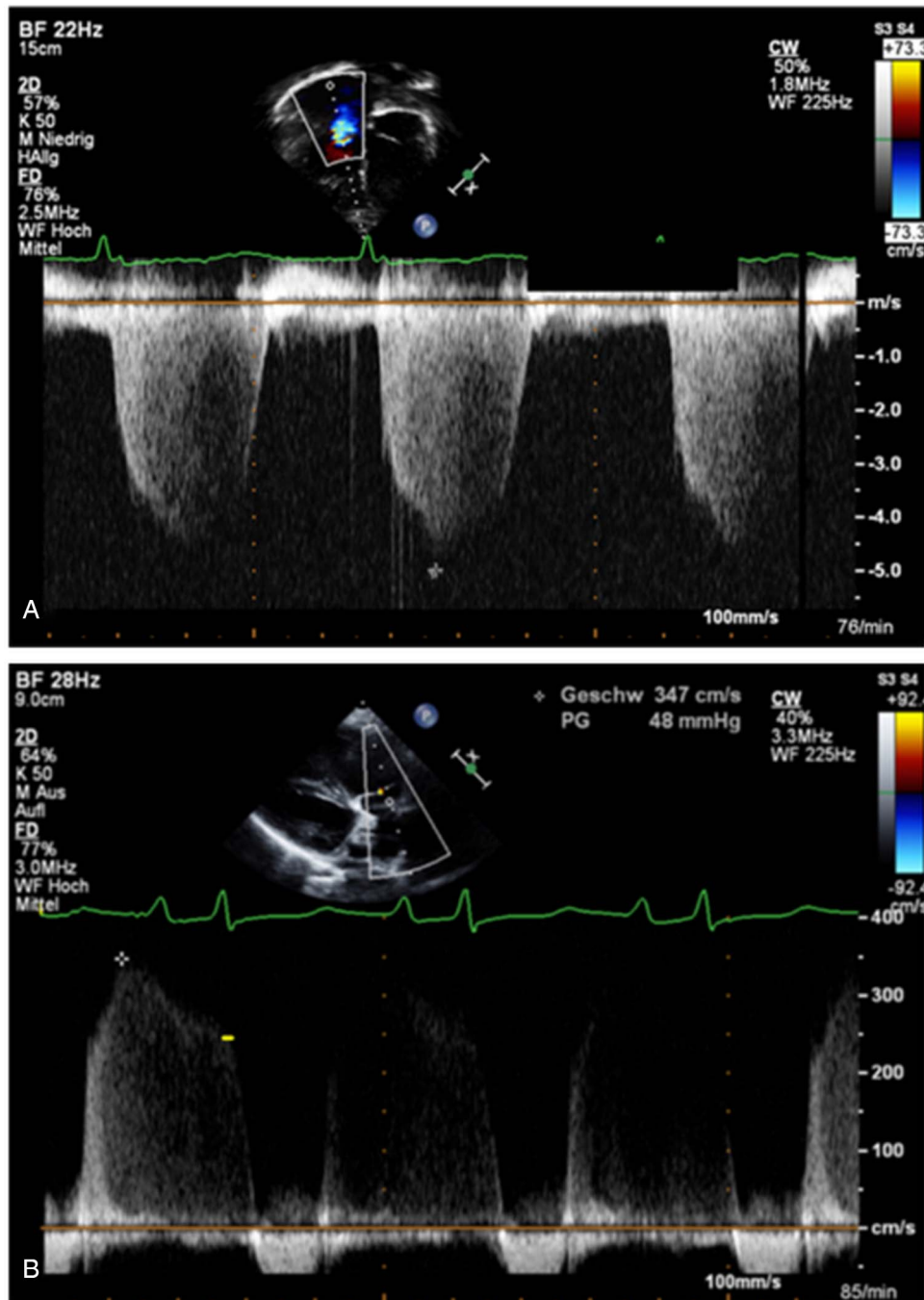
associated with increased mortality; however, mortality was not increased when only a small PE developed.<sup>6</sup> Currently, no data on the significance of PE on mortality in paediatric PH are available. Nevertheless, exact evaluation for PE should be considered in the evaluation of paediatric PH.

Right atrium (RA) enlargement plus interatrial septal bowing from right to left indicates poor RV compliance or increased mean RA pressure (RAP), or both in adults.<sup>7</sup> An RA area >20 cm<sup>2</sup> measured from the apical four-chamber view has been shown to be abnormal, and an RA area >27 cm<sup>2</sup> was associated with a higher rate of transplantation or death in adults with idiopathic PAH (IPAH).<sup>7</sup> The RA size has been demonstrated to be positively related to greater RV dimensions.<sup>8</sup> Currently, no data on RA enlargement in paediatric PH are available. However, determination of RA size may be considered in the evaluation of paediatric PH.

TTE findings of PH alone (eg, elevated TR jet velocity, decreased tricuspid annular plane systolic excursion (TAPSE)) are not sufficient to establish the diagnosis PH and to initiate so-called specific pharmacotherapy—unless the patient is too sick/unstable to undergo cardiac catheterisation,<sup>9</sup> but deserves the immediate initiation of (usually parenteral) prostanoid therapy (WHO functional class III/IV).

### Estimation of PAP

The estimation of systolic PAP (PASP) is based on the peak velocity of the jet of TR. The simplified Bernoulli equation and CW-Doppler is used to assess velocity within TR jet [RVSP = PASP = 4 × (TRV)<sup>2</sup> + RA v wave = approximately 4 × (TRV)<sup>2</sup> + mean RAP] describes the relationship of TR and RVSP as a surrogate of PASP in the absence of an RV outflow tract (OT) obstruction (figure 1A). The mean (m)PAP can be calculated from the PA systolic pressure (≈ RVSP) as the mean PAP = 0.61 × PASP + 2 mm Hg. The latter formula could allow the use of Doppler measurements to raise the suspicion for PH, applying the accepted definition of paediatric PH as a mean PAP >25 mm Hg and a PVR index >3.0 Wood units m<sup>2</sup> for biventricular circulations.<sup>10</sup> Usually TR velocity (TRV) values >3.4 m/s, corresponding to a PASP >50 mm Hg at rest, make PAH highly likely in

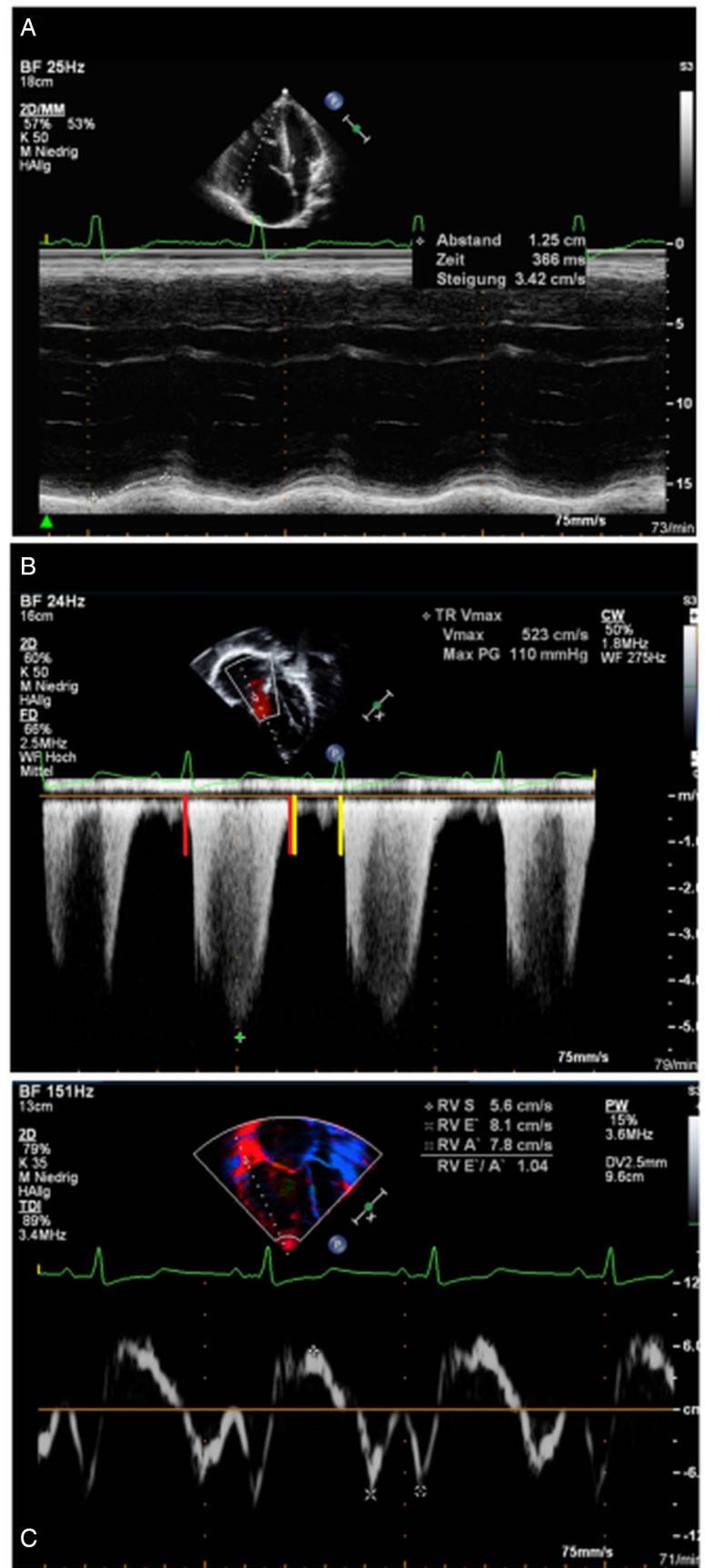


**Figure 1** Estimation of RV and PA pressure using continuous wave (CW)-Doppler echocardiography. (A) Estimation of RV systolic pressure through the measurement of the velocity of the tricuspid regurgitation (TR) jet using CW-Doppler in the apical four-chamber view. The white broken line indicates CW-Doppler cursor placement at TR. The peak TR velocity is above 4 m/s, thus estimating an increased pressure gradient between RV and right atrium (RA). This added to an estimated RA pressure (v wave) will estimate the systolic RV pressure that is approximately the systolic pulmonary artery pressure (PAP) (in the absence of pulmonary stenosis). (B) Estimation of mean PAP through CW-Doppler of the pulmonary regurgitation (PR) jet in the parasternal short-axis view. The white broken line indicates CW-Doppler cursor placement at PR. The mean PAP can be seen as the PR gradient with a markedly increased value of 48 mm Hg compared with normal values (<25 mm Hg). The end-diastolic regurgitation velocity (yellow line) is 2.5 m/s. When added to an estimated mean RA pressure of 10 mm Hg, this suggests a diastolic PA pressure (dPAP) of 35 mm Hg.

adults. Velocity measurements are dependent on the angle of interrogation (goal: Doppler sample in line with the blood flow). A limitation of the CW-Doppler velocity measurements includes cases with severe TR when the PASP usually is underestimated. Inappropriate estimation of RAP and the use of inadequate Doppler signals were identified as frequent pitfalls in TTE that led to incorrect PAP estimations.<sup>11</sup>

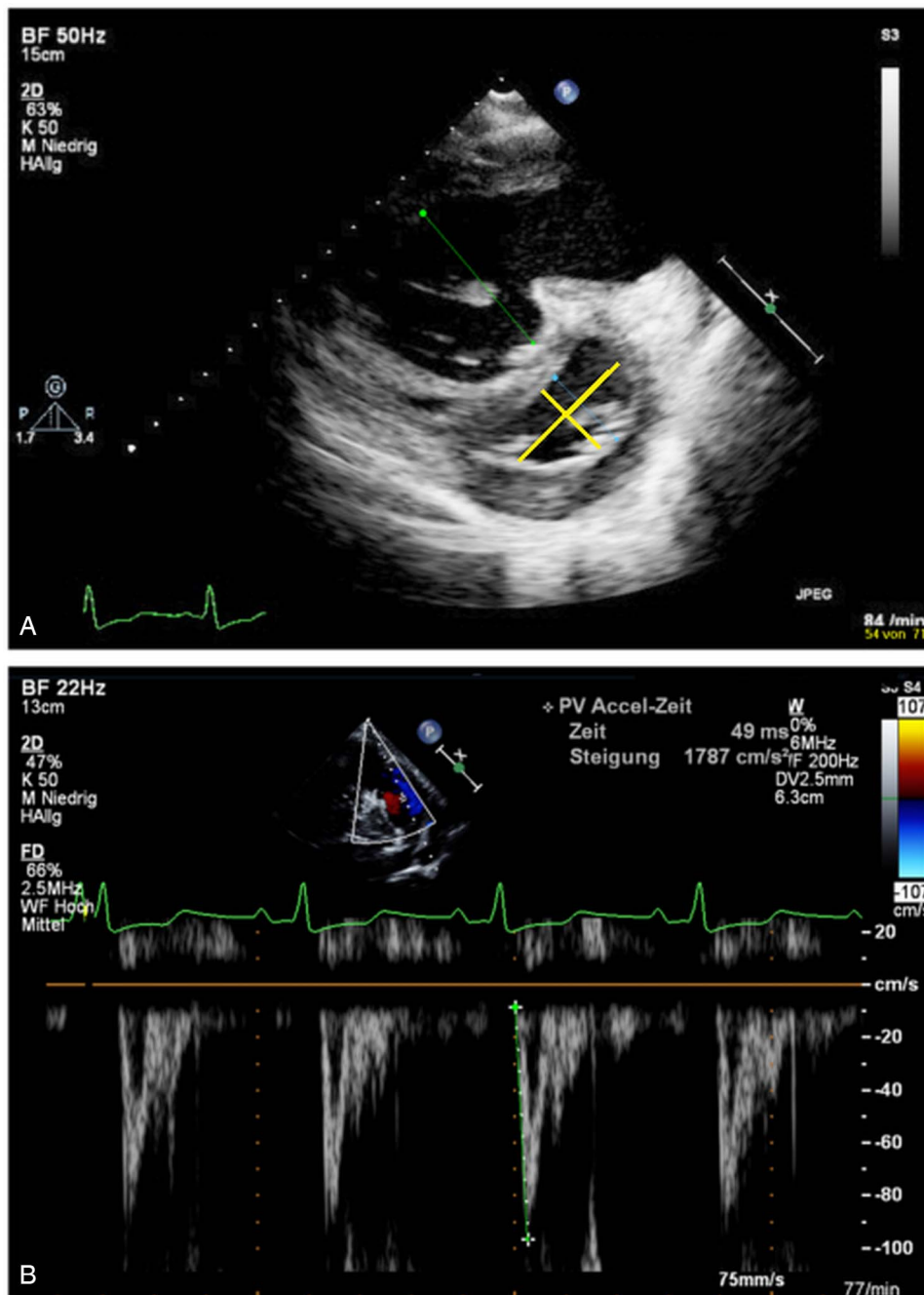
If PR can be interrogated with CW-Doppler, mPAP and end-diastolic PA pressure can be estimated from the maximum (early diastolic) and minimum (end-diastolic) PR velocity (PRV) using the simplified Bernoulli equation [ $mPAP = 4 \times (\max. \text{ diastolic } PRV)^2 + RA \text{ v wave}$ ]; [ $\text{diastolic PAP} = 4 \times (\min. \text{ end-diastolic } PRV)^2 + RA \text{ v wave}$ ].<sup>12</sup> Mean PAP and end-diastolic pressure can

**Figure 2** Measurements in the apical four-chamber view. (A) The white broken line indicates M-Mode cursor placement at the tricuspid lateral annulus. Representative M-mode image of the tricuspid annular plane systolic excursion (TAPSE) in a 17-year-old patient with pulmonary hypertension (PH) secondary to congenital heart disease with a decreased TAPSE. The white broken line shows the decreased TAPSE value and flat course of the excursion. Note the dilatation of the right cavities. (B) Doppler-derived tricuspid regurgitation time (TR) interval ratio of systolic (S) duration to diastolic (D) duration (S/D). The ratio of S/D duration was calculated by dividing the duration of the TR spectral Doppler flow pattern by the time interval of the cardiac cycle that did not include TR. Systolic and diastolic duration using TR duration was measured by continuous wave (CW)-Doppler from the apical four-chamber view to calculate the S/D ratio. The red lines show the systolic duration, and the yellow lines show the diastolic duration. (C) RV tissue Doppler imaging (TDI) along the basal long axis of the RV free wall with the cursor through the lateral tricuspid annulus. Example of a pulsed-wave TDI traced parameters tricuspid annular peak systolic velocity ( $S'$ ), peak early diastolic velocity ( $E'$ ) and peak late (atrial) diastolic velocity ( $A'$ ) in a 10-year-old patient with PH. Note the reduced values on all sites and the dilated right cavities.  $S'$ , tricuspid annular peak systolic velocity;  $E'$ , peak early diastolic velocity;  $A'$ , peak diastolic velocity during atrial contraction.



also be routinely used in the diagnosis and follow-up of paediatric PH, especially when TRV is unreliable. In 2D echocardiography, the pulmonary valve can best be imaged in

the parasternal short-axis view at the level of the aortic valve (figure 1B). TRV and PRV should be taken from multiple views searching for the best envelope and maximal velocity.



**Figure 3** Measurements in the parasternal short-axis view. (A) Parasternal short-axis view of RV and LV. D-shaped LV and enlarged RV (due to flattening of the interventricular septum). The end-systolic septal bowing is typical for pulmonary hypertension (PH). Remodelling of left and right cavities in a 14-year-old patient with severe idiopathic PH (iPH). The RV/LV ratio was derived from RV diameter and LV diameter at end systole. The green line marks the severe dilatation of RV with LV compression shown by the blue line. The longer yellow line represents the anterior–posterior dimension and the shorter yellow line the septal–lateral dimension to determine the eccentricity index. (B) Parasternal short-axis view. Representative pulmonary artery flow velocity profile in the mean pulmonary artery in a 9-year-old patient with iPH. Note the rapid acceleration to peak flow velocity in early systole marked by the green line, with a rapid deceleration to a nadir in mid systole, followed by a secondary increase in flow velocity in late systole. Pulmonary artery acceleration time of 49 ms is reduced compared with normal subjects.

### RV longitudinal systolic function (TAPSE)

TAPSE, a variable of longitudinal systolic RV function, reflects the longitudinal excursion of the tricuspid annulus towards the apex and is measured with M-mode in the apical four-chamber view<sup>13</sup> (Figure 2A). TAPSE appears to be a developmentally dependent variable as values increase from preterm infants to healthy adolescents with growth and ageing.<sup>14</sup> Reference values for TAPSE are available for adults and in children.<sup>15 16</sup>

Abnormal TAPSE is related to abnormal RV function in adults. For every 1 mm decrease in TAPSE, the unadjusted risk of death increased by 17% in adult patients with PH.<sup>17</sup> With increasing age of paediatric and young adult patients with PH, that is, the longer the RV is exposed to severe pressure overload and environmental factors associated with PH, TAPSE values fade and become significantly decreased compared with age-matched controls.<sup>18</sup> Despite the difficulty in determining the exact onset

**Table 2** Echocardiographic investigations in suspected or confirmed paediatric PH

Echocardiographic variables	Interpretation	At diagnosis	Follow-up	Ref.
PASP (mm Hg)	Bernoulli equation ( $dp=4 \times v^2$ ): TR velocity used to estimate RVSP ( $\approx$ PASP) PASP $>50$ mm Hg at rest, makes PAH highly likely in adults	Yes	Yes	10 11
Mean PAP (mm Hg)	Estimated mPAP=maximum PR velocity plus mean RAP Def. paediatric PH: mean PAP $>25$ mm Hg and PVRI $>3.0$ WU $m^2$	Yes	Yes	11
Diastolic PAP (mm Hg)	Estimated PADP=minimal (end diastolic) PR velocity plus mean RAP PADP independent of RV stroke volume	Yes	Yes	12
TR peak velocity (m/s)	RVSP=maximum instantaneous TR gradient across tricuspid valve plus the right atrial v wave. If TR velocity $>3.4$ m/s, PH is likely (see PASP)	Yes	Yes	11
TAPSE (mm)	Decreased in advanced PH with systolic RVD in children and adults	Yes	Yes	17 18
Tricuspid Em (cm/s)—TV inflow	Impaired $<8$ cm/s indicates higher mortality risk in children with PH	Yes	Yes	35
S/D ratio	Increased S/D duration ratio $>1.4$ inversely correlates with survival in children with PH; indicator of PH severity	Yes	Probably	31 32
Strain (%)	Patients with PH may have lower end-systolic longitudinal strain (RV free wall)	If available		20 23
Strain rate ( $s^{-1}$ )	RV strain rate at the RV free wall may be impaired in patients with PH RV strain and strain rate are frequently altered in severe PH with RVD	If available		21
3D echocardiography	Useful for determination of RV and LV volumes	If available		28
S' in RV TDI (cm/s)	Decreased in advanced PH with systolic RV dysfunction; an impaired S' (measured in TDI, lateral RV wall) predicts adverse outcome	Yes	Yes	34
RV/LV ratio	RV/LV ratio $>1$ indicates increased risk for adverse events in paediatric PH	Yes	Yes	39
PA acceleration time (ms)	PAAT of $<100$ ms—high probability of PH in adults (HR dependent)	Yes	Yes	41
RV FAC (%)	Decreased RV FAC indicated decreased systolic RV function in adult PH	Probably		17
E/A ratio (mitral inflow)	Reversed E/A (E $>$ A) indicates a high LAP and a high LVEDP	Yes	Yes	36 37
S' TDI (cm/s; LV lateral, septal)	Nagueh formula may be used to estimate the PCWP ( $\approx$ LVEDP)	Probably		36
LVEF (%; LV systolic function)	LVEF (Simpson's method) may be decreased in severe RV–LV interaction	Yes	Yes	37

Em, early diastolic myocardial relaxation velocity; FAC, fractional area change; LAP, left atrial pressure; LVEDP, LV end-diastolic pressure; PAAT, pulmonary artery acceleration time; PCWP, pulmonary capillary wedge pressure; PADP, pulmonary artery end-diastolic pressure; PAH, pulmonary arterial hypertension; PAP, pulmonary artery pressure; PASP, pulmonary artery systolic pressure; PVR, pulmonary vascular resistance; PR, pulmonary regurgitation; RAP, right atrial pressure; RVD, RV dysfunction; RVSP, RV systolic pressure; S', peak systolic velocity; S/D, systolic/diastolic ratio; TAPSE, tricuspid annular plane systolic excursion; TDI, tissue Doppler imaging; TR, tricuspid regurgitation; TV, tricuspid valve.

of PH in the individual patient, a decreased TAPSE value (z-score  $<-2$ ) may point towards an early decline of global RV systolic function. Of note, TAPSE does not take into account segmental RV function and contractility, or the important radial systolic function that significantly contributes to RV ejection in the setting of severe RV hypertrophy.

Since RV dysfunction and advanced PH with systemic or supra-systemic RV pressure frequently affects diastolic and systolic LV function, tissue Doppler imaging (TDI) not only for the RV but for the left lateral wall and interventricular septum, as well as MAPSE for longitudinal systolic LV function, also should be documented at PH diagnosis and in selected patient encounters at PH follow-up.

### Deformation imaging (2D strain and strain rate)

Strain measurements are known to be useful to quantify global and regional RV function in adult patients with PH.<sup>19</sup> The more severe the PH, the lower the end-systolic longitudinal strain in the RV free wall, demonstrating a dependence of systolic RV longitudinal strain measurement on RV afterload.<sup>20</sup> RV global longitudinal peak systolic strain and strain rate were significantly reduced in adults with PH compared with controls.<sup>21</sup> Significant correlations between RV strain and strain rate and the mean PAP were found in adult patients with PH.<sup>22</sup> An individual improvement of  $>5\%$  in RV strain at follow-up was correlated with better pulmonary haemodynamics, improved clinical status and less evidence of RV failure.<sup>23</sup> It was recently observed that low RV longitudinal peak systolic strain ( $>-19\%$ ) was associated with lower TAPSE and worse New York Heart Association functional class.<sup>24</sup> Quantitative assessment of RV free-wall longitudinal

strain is feasible and a powerful predictor of clinical outcome of patients with known or suspected PH.<sup>25</sup> Disadvantages of deformation imaging include the relative low temporal resolution that hinders tracking in the presence of high heart rates, and the time-intensive postprocessing of the image data.

### 3D echocardiography

3D echocardiography is very dependent on adequate acoustic windows with 3D measurements and only feasible in about 50% of all patients studied<sup>26</sup> due to inadequate image quality. In patients with PH, a good correlation was found in the measurements of RVEF and right ventricular end-diastolic volume (RVEDV) determined by either 3D echocardiography or MRI. Thus, it is suggested that RV remodelling can be comprehensively assessed by 3D echocardiography as long as image quality is adequate.<sup>27</sup> By 3D TTE, adult patients with PAH had more dilated, hypertrophied and poorly functioning RVs compared with other forms of PH.<sup>28</sup> The use of 3D echocardiography has been validated for the measurement of RV volumes, and EF in adults, which correlated well with variables determined by cardiovascular MRI also in a paediatric population.<sup>29</sup>

### Systolic-to-diastolic duration ratio

In patients with PH, RV contraction is prolonged, although RV ejection time is shortened, so that systolic (S) duration to diastolic (D) S/D duration was proposed as an indicator of PH severity.<sup>30</sup> Children with significant PH have a marked decrease in diastolic duration and increase of the S/D duration ratio when their heart rates increase compared with control subjects (figure 2B). An increased S/D duration ratio  $>1.4$  inversely

**Table 3** Advantages and disadvantages of (surrogate) echocardiographic measurements in PH

Variable	Main advantages	Main disadvantages
Systolic PAP (mm Hg) (RVSP as a surrogate of the systolic PAP)	Easily to perform; has been reported to be of prognostic value for PH	Depends of angle of CW-Doppler interrogation; PASP may be underestimated (eg, in patients with severe TR) or may be overestimated
Mean PAP (mm Hg)	At times better angle via PR than TR	PR required for PR velocity measurements
Diastolic PAP (mm Hg)	Independent of RV systolic function	PR required for PR velocity measurements
TR peak velocity	Estimation of RVSP; easy to obtain TRV >3.4 m/s—PH likely	Trivial TR may allow accurate measurement of max. instantaneous TR gradient
S/D Ratio	S/D duration ratio >1.4—PH likely inversely correlates with survival	Requires presence of defined TR onset/end Heart rate and loading condition influenced
TAPSE (mm)	Easily to perform; impaired RV function —values <2 SD of age-related values	Does not take into account segmental or radial RV function and contractility
Strain (%)	Regional deformation provide information on regional myocardial dysfunction;	Relative low temporal resolution that hinders tracking in the presence of high heart rates;
Strain rate (1/s)	impaired RV longitudinal strain (<-12.5%)=greater PH severity	Requires a significant amount of postprocessing time
3D echocardiography	Full volumetric data sets of the heart; RVEDV and EF measurements;	Dependent on adequate acoustic windows Only feasible in ~50% of all patients
S' in TDI (cm/s)	easy to perform; decreased in paediatric Patients with PH (proven by MRI data)	Variability with different loading conditions, assessment of motion in a single dimension
RV/LV diameter ratio	Easily obtained in the clinical setting; ratio >1—PH likely	Cannot be used in PH patients with left-to-right shunt lesions
PAAT	Can be measured in 99% of patients Shortened <100 ms—PH likely	Possible pulmonary valve artefacts Heart rate dependent

CW, continuous wave; PA, pulmonary artery; PAAT, pulmonary artery acceleration time; PAP, pulmonary artery pressure; PR, pulmonary regurgitation; PASP, pulmonary artery systolic pressure; RVSP, RV systolic pressure; S', peak systolic velocity of the RV lateral wall; S/D ratio, systolic/diastolic ratio; TDI, tissue Doppler imaging; TR, tricuspid regurgitation; TRV, TR velocity; TAPSE, tricuspid annular plane systolic excursion.

correlates with survival in paediatric PH.<sup>31</sup> A limitation of S/D duration ratio is the need for a clearly defined onset and end of TR on spectral Doppler tracings to assess ventricular function. Although RV contraction is prolonged but RV ejection is shortened in severe PH, diastolic duration (or more precisely relaxation and filling) is even shorter than systolic ejection.<sup>32</sup> The S/D duration ratio is not dependent on heart size, which is of importance in growing children.

### Tissue Doppler velocities

TDI, which measures myocardial velocities, allows quantitative assessment of RV systolic function. Tissue velocities vary with age, therefore normal values for adults cannot be applied to children. In adults, TDI measurements have been shown to have a sensitivity of only 33% and a specificity of 100% to identify patients with precapillary PH, and a negative predictive value of 85% to rule out precapillary PH.<sup>33</sup> In paediatric PH associated with congenital heart disease (PH-CHD), the tricuspid annular peak systolic velocity (S') measured on the lateral tricuspid annulus is significantly impaired, with constant decrease of the S' value the longer the PH lasts<sup>34</sup> (Figure 2C). RV TDI variables were found to correlate well with invasive pulmonary haemodynamics in patients with paediatric PH-CHD and were suggested to be useful variables in the follow-up of children with IPAH.<sup>35</sup> TDI investigations of patients with paediatric PH revealed lower S' and early diastolic (E) velocities at the tricuspid, septal and LV lateral wall compared with controls.<sup>36</sup> In patients with paediatric PH, abnormalities in systolic and diastolic ventricular function were also identified and shown to be more prominent with older age.<sup>37</sup> Of note, TDI be applied to any chamber morphology because the variables are not based

on any assumption of chamber geometry. The limitations of TDI are mainly related to the variability of the measured velocities with different loading conditions, heart size and the dependency on the angle of interrogation.

### RV-to-LV diameter ratio

RV is more compliant than LV but LV adapts better to pressure overload. In PH, pressure in RV increases, causing the inter-ventricular septum to flatten in systole. In cases of supra-systemic RV pressure, the septum may even bulge into the LV cavity at end systole.<sup>38</sup> The RV/LV end-systolic diameter ratio, measured in the parasternal short-axis view at the level of the papillary muscles at end systole, is a variable that correlates well with invasive haemodynamic measures<sup>39</sup> (Figure 3A). The RV/LV ratio was derived to combine a measure of RV size with septal shift secondary to elevated RV pressure. The RV/LV ratio has been shown to be significantly higher in children with PH compared with controls.<sup>39</sup> An RV/LV ratio >1 was associated with increased risk for adverse events in paediatric PH.<sup>39</sup> The RV/LV end-systolic diameter ratio can be easily obtained in the clinical setting and used to follow patients with PH over time. Limitation of the RV/LV end-systolic diameter ratio is that left-to-right shunts lesions may alter RV size and that therefore this index is of limited use in such patients with PH. In a pressure-loaded RV, flattening of the septum occurs in end systole, resulting also in an increased end-systolic LV eccentricity index. This LV eccentricity index (figure 3A) is the ratio of the minor axis of LV parallel to the septum divided by the minor axis perpendicular to the septum. An LV eccentricity index >1 has been shown to be prognostic in adult patients with IPAH who also had a decreased RV systolic function.<sup>40</sup>

### Pulmonary flow velocity measurements

The PA forward flow velocity profile, obtained in the RVOT with pulsed wave (PW)- Doppler just proximal to the pulmonary valve, can be used to obtain PAAT (figure 3B). PAAT is the interval in microseconds from the onset of ejection to the peak flow velocity and can be used for the estimation of RV pressure and PASP.<sup>41</sup> Even when a TR CW-Doppler envelope is not available or incomplete, PAAT measurements are possible in 99% of patients.<sup>41</sup> In adults, a PAAT <100 ms is considered abnormal and an indicator for elevated mPAP and PVR.<sup>42</sup> In children, a PAAT >124 ms was suggested as cut-off value to distinguish between patients with PH and healthy controls.<sup>43</sup> Proper placement of the Doppler sample in the middle of PA and accurate alignment to the long axis of PA is essential. Limitation of PAAT is its dependency on heart rate and RV function, that is, usually, tachycardia shortens and systolic RV dysfunction lengthens the PAAT.

### Follow-up

Following the initial diagnostic evaluation for PH, transthoracic echocardiograms should be performed in 3–6 months' intervals. More frequent echocardiograms should be conducted when the clinical condition or medication changes (class of recommendation (COR): I; level of evidence (LOE): C).

### CONCLUSION

The results of the initial TTE examination often are pivotal in the decision-making process whether children should be referred to an expert PH centre and undergo further diagnostic testing, including cardiac catheterisation and cardiac MRI. We suggest the regular assessment of certain prognostic TTE variables as part of a standardised approach for initial diagnosis and for the follow-up management of children with PH. Overreliance on any single TTE variable should be avoided as it detracts from the overall diagnostic potential of a comprehensive standardised TTE examination for PH. Thus, a TTE protocol for PH should include an estimation of the systolic PAP (TR CW-Doppler), the estimation of mean PAP and end-diastolic PAP (PR CW-Doppler), determination of the PAAT (RVOT PW-Doppler) as surrogate of PAP and PVR, RV longitudinal systolic function measurements using M-mode, RV strain and strain rate measurements, RV volume measurement by 3D echocardiography, determination of the RV systolic to diastolic duration ratio (TR), determination of tissue Doppler velocities, measurement of the RV/LV end-systolic diameter ratio, and LV eccentricity index. Regular and consistent usage of such a TTE protocol may increase the identification of children with PH, leading to earlier comprehensive diagnosis and treatment. However, no clinical decision should be based solely on these TTE measures and confounding factors such as a right bundle branch block make interpretation of TTE variables difficult. Prospective comparative studies in patients with paediatric PH and randomised controlled trials using the suggested TTE variables are therefore necessary. However, the new imaging methodologies discussed in this article already offer new insights into RV function and geometry in PH. Cardiac sonographers should become familiar with both traditional and newer techniques for more detailed assessments of ventricular performance in children with PH.

### Author affiliations

<sup>1</sup>Division of Paediatric Cardiology, Department of Paediatrics, Medical University Graz, Graz, Austria

<sup>2</sup>Paediatric Heart Centre, Justus-Liebig-University, Giessen, Germany

<sup>3</sup>Department of Paediatric Cardiology, Saarland University Hospital, Homburg, Germany

<sup>4</sup>Department of Paediatric Cardiology and Critical Care, Hannover Medical School, Hannover, Germany

**Competing interests** GH and CA indicate no conflict of interests related to the content of this article. HA-K served as consultant for Actelion and received financial reimbursement for his service.

**Relationships with industry (RWI):** HAK served as consultant for Actelion and received financial reimbursement for his service. MK, CA and GH no relevant relationship with industry.

**Funding** CA currently receives grant funding from Stiftung Kinderherz (2511-10-13-001) and Behring-Röntgen-Stiftung (59-0018). GH currently receives grant support from the German Research Foundation (DFG; HA 4348/2-1), Fördergemeinschaft deutsche Kinderherzzentren (W-H-001-2014) and Stiftung Kinderherz (2511-6-13-011).

This *Heart* supplement was produced with support from an unrestricted educational grant from Actelion Pharmaceuticals Germany GmbH, Bayer Pharma AG, and Pfizer Inc. None of these organisations had any influence on the composition of the writing group or the content of the articles published in this supplement. Open Access publication of this article was sponsored by Actelion Pharmaceuticals Germany GmbH.

**Provenance and peer review** Commissioned; externally peer reviewed.

**Open Access** This is an Open Access article distributed in accordance with the Creative Commons Attribution Non Commercial (CC BY-NC 4.0) license, which permits others to distribute, remix, adapt, build upon this work non-commercially, and license their derivative works on different terms, provided the original work is properly cited and the use is non-commercial. See: <http://creativecommons.org/licenses/by-nc/4.0/>

### REFERENCES

- Ivy DD, Abman SH, Barst RJ, *et al.* Pediatric pulmonary hypertension. *J Am Coll Cardiol* 2013;62(Suppl):D117–26.
- Simonneau G, Gatzoulis MA, Adatia I, *et al.* Updated clinical classification of pulmonary hypertension. *J Am Coll Cardiol* 2013;62(Suppl):D34–41.
- Bosson E, D'Andrea A, D'Alto M, *et al.* Echocardiography in pulmonary arterial hypertension: from diagnosis to prognosis. *J Am Soc Echocardiogr* 2013;26:1–14.
- Lopez L, Colan SD, Frommelt PC, *et al.* Recommendations for quantification methods during the performance of a pediatric echocardiogram: a report from the Pediatric Measurements Writing Group of the American Society of Echocardiography Pediatric and Congenital Heart Disease Council. *J Am Soc Echocardiogr* 2010;23:465–95.
- Fenstad ER, Le RJ, Sinak LJ, *et al.* Pericardial effusions in pulmonary arterial hypertension: characteristics, prognosis, and role of drainage. *Chest* 2013;144:1530–8.
- Shimony A, Fox BD, Langleben D, *et al.* Incidence and significance of pericardial effusion in patients with pulmonary arterial hypertension. *Can J Cardiol* 2013;29:678–82.
- Bustamante-Labarta M, Perrone S, De La Fuente RL, *et al.* Right atrial size and tricuspid regurgitation severity predict mortality or transplantation in primary pulmonary hypertension. *J Am Soc Echocardiogr* 2002;15:1160–4.
- Cioffi G, de Simone G, Mureddu G, *et al.* Right atrial size and function in patients with pulmonary hypertension associated with disorders of respiratory system or hypoxemia. *Eur J Echocardiogr* 2007;8:322–31.
- Beghetti M, Berger RM, Schulze-Neick I, *et al.* TOPP Registry Investigators. Diagnostic evaluation of paediatric pulmonary hypertension in current clinical practice. *Eur Respir J* 2013;42:689–700.
- Cerro MJ, Abman S, Diaz G, *et al.* A consensus approach to the classification of pediatric pulmonary hypertensive vascular disease: Report from the PVRI Pediatric Taskforce, Panama 2011. *Pulm Circ* 2011;1:286–98.
- Fisher MR, Forfia PR, Chamera E, *et al.* Accuracy of Doppler echocardiography in the hemodynamic assessment of pulmonary hypertension. *Am J Respir Crit Care Med* 2009;179:615–21.
- Masuyama T, Kodama K, Kitabatake A, *et al.* Continuous-wave Doppler echocardiographic detection of pulmonary regurgitation and its application to noninvasive estimation of pulmonary artery pressure. *Circulation* 1986;74:484–92.
- Miller D, Farah MG, Liner A, *et al.* The relation between quantitative right ventricular ejection fraction and indices of tricuspid annular motion and myocardial performance. *J Am Soc Echocardiogr* 2004;17:443–7.
- Koestenberger M, Nagel B, Ravekes W, *et al.* Systolic right ventricular (RV) function in pediatric and adolescent patients with TOF: echocardiography versus MRI. *J Am Soc Echocardiogr* 2011;24:45–52.
- Lamia B, Teboul JL, Monnet X, *et al.* Relationship between the tricuspid annular plane systolic excursion and right and left ventricular function in critically ill patients. *Intensive Care Med* 2007;33:2143–9.



- 16 Koestenberger M, Ravekes W, Everett A, *et al.* Right ventricular function in infants, children and adolescents: Reference values of the tricuspid annular plane systolic excursion (TAPSE) in 640 healthy patients and calculation of z-score values. *J Am Soc Echocardiogr* 2009;22:715–19.
- 17 Forfia PR, Fisher MR, Mathai SC, *et al.* Tricuspid annular displacement predicts survival in pulmonary hypertension. *Am J Respir Crit Care Med* 2006;174:1034–41.
- 18 Koestenberger M, Nagel B, Avian A, *et al.* Systolic right ventricular function in children and young adults with pulmonary artery hypertension secondary to congenital heart disease and tetralogy of Fallot: tricuspid annular plane systolic excursion (TAPSE) and magnetic resonance imaging data. *Congenit Heart Dis* 2012;7:250–8.
- 19 Dambrauskaitė V, Delcroix M, Claus P, *et al.* Regional right ventricular dysfunction in chronic pulmonary hypertension. *J Am Soc Echocardiogr* 2007;20:1172–80.
- 20 Puwanant S, Park M, Popović ZB, *et al.* Ventricular geometry, strain, and rotational mechanics in pulmonary hypertension. *Circulation* 2010;121:259–66.
- 21 Li Y, Xie M, Wang X, *et al.* Right ventricular regional and global systolic function is diminished in patients with pulmonary arterial hypertension: a 2-dimensional ultrasound speckle tracking echocardiography study. *Int J Cardiovasc Imaging* 2013;29:545–51.
- 22 Naderi N, Ojaghi Haghighi Z, Amin A, *et al.* Utility of right ventricular strain imaging in predicting pulmonary vascular resistance in patients with pulmonary hypertension. *Congest Heart Fail* 2013;19:116–22.
- 23 Hardegree EL, Sachdev A, Villarraga H, *et al.* Role of serial quantitative assessment of right ventricular function by strain in pulmonary arterial hypertension. *Am J Cardiol* 2013;111:143–8.
- 24 Haecck ML, Scherptong RW, Marsan NA, *et al.* Prognostic value of right ventricular longitudinal peak systolic strain in patients with pulmonary hypertension. *Circ Cardiovasc Imaging* 2012;5:628–36.
- 25 Fine NM, Chen L, Bastiansen PM, *et al.* Outcome prediction by quantitative right ventricular function assessment in 575 subjects evaluated for pulmonary hypertension. *Circ Cardiovasc Imaging* 2013;6:711–21.
- 26 Khoo NS, Young A, Occlshaw C, *et al.* Assessments of right ventricular volume and function using three-dimensional echocardiography in older children and adults with congenital heart disease: comparison with cardiac magnetic resonance imaging. *J Am Soc Echocardiogr* 2009;22:1279–88.
- 27 Grapsa J, O'Regan DP, Pavlopoulos H, *et al.* Right ventricular remodeling in pulmonary arterial hypertension with three-dimensional echocardiography: comparison with cardiac magnetic resonance imaging. *Eur J Echocardiogr* 2010;11:64–73.
- 28 Grapsa J, Gibbs JS, Dawson D, *et al.* Morphologic and functional remodeling of the right ventricle in pulmonary hypertension by real time three dimensional echocardiography. *Am J Cardiol* 2012;109:906–13.
- 29 Lu X, Nadvoretzkiy V, Bu L, *et al.* Accuracy and reproducibility of real-time three-dimensional echocardiography for assessment of right ventricular volumes and ejection fraction in children. *J Am Soc Echocardiogr* 2008;21:84–9.
- 30 Sarnari R, Kamal RY, Friedberg MK, *et al.* Doppler assessment of the ratio of the systolic to diastolic duration in normal children: relation to heart rate, age and body surface area. *J Am Soc Echocardiogr* 2009;22:928–32.
- 31 Alkon J, Humpl T, Manlihot C, *et al.* Usefulness of the right ventricular systolic to diastolic duration ratio to predict functional capacity and survival in children with pulmonary arterial hypertension. *Am J Cardiol* 2010;106:430–6.
- 32 Rain S, Handoko ML, Trip P, *et al.* Right ventricular diastolic impairment in patients with pulmonary arterial hypertension. *Circulation* 2013;128:2016–25.
- 33 Hammerstingl C, Schueler R, Bors L, *et al.* Diagnostic value of echocardiography in the diagnosis of pulmonary hypertension. *PLoS ONE* 2012;7:e38519.
- 34 Koestenberger M, Nagel B, Ravekes W, *et al.* Tricuspid annular peak systolic velocity (S') in children and young adults with pulmonary artery hypertension secondary to congenital heart diseases, and in those with repaired tetralogy of Fallot. *J Am Soc Echocardiogr* 2012;25:1041–9.
- 35 Takatsuki S, Nakayama T, Jone PN, *et al.* Tissue Doppler imaging predicts adverse outcome in children with idiopathic pulmonary arterial hypertension. *J Pediatr* 2012;161:1126–31.
- 36 Lammers AE, Haworth SG, Riley G, *et al.* Value of tissue Doppler echocardiography in children with pulmonary hypertension. *J Am Soc Echocardiogr* 2012;25:504–10.
- 37 Vorhies EE, Gajarski RJ, Yu S, *et al.* Echocardiographic evaluation of ventricular function in children with pulmonary hypertension. *Pediatr Cardiol* 2014;35:759–66.
- 38 Haddad F, Couture P, Tousignant C, *et al.* The right ventricle in cardiac surgery, a perioperative perspective: II. Pathophysiology, clinical importance, and management. *Anesth Analg* 2009;108:422–33.
- 39 Jone PN, Hinzman J, Wagner BD, *et al.* Right ventricular to left ventricular diameter ratio at end-systole in evaluating outcomes in children with pulmonary hypertension. *J Am Soc Echocardiogr* 2014;27:172–8.
- 40 Ghio S, Klersy C, Magrini G, *et al.* Prognostic relevance of the echocardiographic assessment of right ventricular function in patients with idiopathic pulmonary arterial hypertension. *Int J Cardiol* 2010;140:272–8.
- 41 Yared K, Noseworthy P, Weyman AE, *et al.* Pulmonary artery acceleration time provides an accurate estimate of systolic pulmonary arterial pressure during transthoracic echocardiography. *J Am Soc Echocardiogr* 2011;24:687–92.
- 42 Granstam SO, Björklund E, Wikström G, *et al.* Use of echocardiographic pulmonary acceleration time and estimated vascular resistance for the evaluation of possible pulmonary hypertension. *Cardiovasc Ultrasound* 2013;11:7.
- 43 Cevik A, Kula S, Olgunturk R, *et al.* Assessment of pulmonary arterial hypertension and vascular resistance by measurements of the pulmonary arterial flow velocity curve in the absence of a measurable tricuspid regurgitant velocity in childhood congenital heart disease. *Pediatr Cardiol* 2013;34:646–55.