



OPEN ACCESS

Original research

# Using historical cardiac troponins to identify patients at a high risk of myocardial infarction

Andreas Roos ,<sup>1,2</sup> Gustaf Edgren<sup>2</sup>

► Additional supplemental material is published online only. To view, please visit the journal online (<http://dx.doi.org/10.1136/heartjnl-2022-321198>).

<sup>1</sup>Department of Emergency and Reparative Medicine, Karolinska University Hospital, Huddinge Stockholm, Sweden

<sup>2</sup>Department of Medicine Clinical Epidemiology Division, Karolinska Institutet, Solna Stockholm, Sweden

## Correspondence to

Dr Andreas Roos, Department of Emergency and Reparative Medicine, Karolinska Universitetssjukhuset, Stockholm SE-141 86, Sweden; [andreas.roos@sil.se](mailto:andreas.roos@sil.se)

Received 5 April 2022  
Accepted 18 July 2022  
Published Online First  
10 August 2022

## ABSTRACT

**Objective** Many patients who present with chest pain have previous measurements of high-sensitivity cardiac troponin T (hs-cTnT). The clinical usefulness of incorporating these measurements in identifying patients who are at a high risk of myocardial infarction (MI) is unknown. We investigated if the relative change between a historical hs-cTnT and the admission hs-cTnT could improve early identification of patients with a high risk of MI.

**Methods** We included all patients presenting with chest pain to seven different emergency departments (EDs) in Sweden from December 2009 to December 2016, who had at least one hs-cTnT measurement at the presentation and at least one available prior measurement. We used logistic regression to investigate the diagnostic performance of using various combinations of current and historical hs-cTnT measurements in diagnosing MI within 30 days.

**Results** A total of 27 809 visits were included, among whom 2686 (9.7%) had an MI within 30 days. A cut-off value for historical hs-cTnT-adjusted admission hs-cTnT with similar specificity (91.2%) as an admission hs-cTnT of  $\geq 52$  ng/L identified 4% more MIs (43% vs 39%) and had a higher positive predictive value, 42.6% (95% CI, 41.0% to 44.3%) vs 38.9% (95% CI 37.4% to 40.4%), as well as a higher positive likelihood ratio, 6.95 (95% CI 6.69 to 7.22) vs 5.95 (95% CI 5.73 to 6.18). Among patients with an admission hs-cTnT of  $< 52$  ng/L who were classified as high-risk patients when incorporating past hs-cTnT measurements, 28% suffered an MI.

**Conclusions** Historical hs-cTnT levels can be used with admission hs-cTnT to improve early risk stratification of MI in the ED.

## INTRODUCTION

The use of high-sensitivity cardiac troponin (hs-cTn) assays in clinical practice has improved the early diagnosis of myocardial infarction (MI) in emergency department (ED) patients with chest pain.<sup>1-4</sup> Several hs-cTn-based algorithms for risk stratification exist, which help clinicians to triage patients towards rule-in or rule-out already at first presentation.<sup>5-7</sup> Current guidelines from the European Society of Cardiology (ESC) for the management of patients with a suspected non-ST segment acute coronary syndrome (NSTE-ACS) recommend the use of a 0-and-1-hour algorithm which identifies patients with an admission hs-cTnT concentration of  $\geq 52$  ng/L as having a high risk of MI, among whom prompt management and treatment are required.<sup>8</sup>

## WHAT IS ALREADY KNOWN ON THIS TOPIC

- ⇒ The clinical role of historical high-sensitivity cardiac troponin T (hs-cTnT) concentrations in risk stratification of patients with chest pain in the emergency department (ED) is unknown.
- ⇒ We investigated if the relative change between a historical hs-cTnT measurement and the 0-hour hs-cTnT could improve early identification of patients with a high risk of MI.

## WHAT THIS STUDY ADDS

- ⇒ We found that a novel historical-hs-cTnT-based strategy with similar specificity (91.2%) as an admission hs-cTnT of  $\geq 52$  ng/L identified 4% more MIs (43% vs 39%) and had a higher positive predictive value, 42.6% (95% CI 41.0% to 44.3%) vs 38.9% (95% CI 37.4% to 40.4%).

## HOW THIS STUDY MIGHT AFFECT RESEARCH, PRACTICE OR POLICY

- ⇒ The use of a novel historical-hs-cTnT-based strategy could ultimately lead to prognostic improvements, as a rapid diagnosis of MI is essential for the early initiation of evidence-based and effective therapies.

Hs-cTnT measurements from prior visits are often available in patients presenting to the ED with symptoms suggestive of an acute MI.<sup>9</sup> The clinical usefulness of incorporating previous hs-cTnT measurements is unclear, but merits further attention as they could potentially help to improve identification of patients who are at a high risk of MI.

Using a large cohort of patients with a primary report of chest pain in the ED, we sought to investigate if the change between a historical hs-cTnT concentration and the admission hs-cTnT could be used to improve early risk stratification for an evolving MI.

## METHODS

### Data sources

The study was based on data from seven large EDs in Stockholm and Göteborg, Sweden, between 1 December 2009 and 1 December 2016. Each hospital's local administrative database was used to identify all ED visits by adult patients during the study period. Laboratory data were obtained from the hospitals' IT Departments. The Elecsys 2010 system (Roche Diagnostics, Mannheim, Germany) was used to analyse hs-cTnT levels at all sites. This assay has a detection

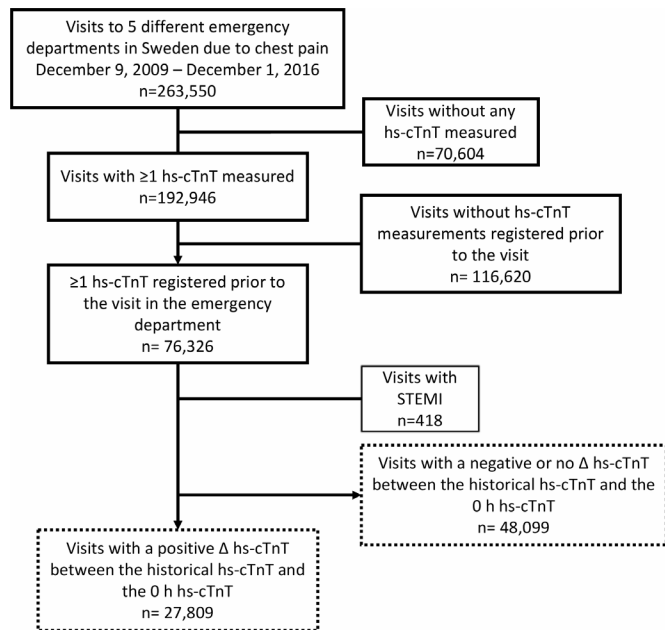


► <http://dx.doi.org/10.1136/heartjnl-2022-321198>



© Author(s) (or their employer(s)) 2023. Re-use permitted under CC BY. Published by BMJ.

**To cite:** Roos A, Edgren G. *Heart* 2023;**109**:127–133.



**Figure 1** Selection of the study population. hs-cTnT, high-sensitivity cardiac troponin T; STEMI, ST-segment elevation myocardial infarction.

limit of 5 ng/L, a 99th percentile cut-off point of 14 ng/L, and a coefficient of variation of <10% at 13 ng/L.<sup>1</sup>

Data on ED visits and laboratory data were thereafter sent to the Swedish National Board of Health and Welfare for ascertaining information on comorbidities, use of medication and mortality, including causes of death, using data from the National Patient Register (NPR), the Prescribed Drug Register and the Cause of Death Register, respectively.<sup>10 11</sup> Further details on MI diagnoses were obtained from The Swedish Web system for Enhancement and Development of Evidence-based care in Heart disease Evaluated According to Recommended Therapies (SWEDEHEART) register.<sup>12</sup>

### Study population

All visits with a primary complaint of chest pain were identified in the study base. After excluding visits associated with a STEMI diagnosis, we analysed all visits with at least one hs-cTnT concentration measurement, at least one historical hs-cTnT concentration measurement available, and where there was an increase between the historical hs-cTnT and the first hs-cTnT concentration measured at the ED visit (figure 1).

### Outcomes and comorbidities

The primary outcome was an MI diagnosis within 30 days of the index date, which was defined as a discharge diagnosis from the NPR of I21 or I22, and/or as an MI diagnosis registered in the SWEDEHEART register. Secondary outcomes were all-cause mortality and cardiovascular mortality within 30 days. Cardiovascular death was defined as a cause of death in the I-chapter, or R960-R961, according to the International Classification of Disease (ICD), Revision 10. Follow-up for all outcomes ended on 31 December 2016.

Comorbidities were based on all discharge diagnoses registered before the date of the ED visit, coded according to ICD-10 in the NPR. Ongoing medication usage was defined as at least two dispensed prescriptions of a particular type during the year preceding the index date. Estimated glomerular filtration rate (eGFR) was

calculated based on most recent creatinine concentration, using the Chronic Kidney Disease Epidemiology Collaboration equation.<sup>13</sup>

### Definitions of hs-cTnT measurements

The 0-hour hs-cTnT was defined as the first hs-cTnT measurement at the index visit, and the historical hs-cTnT as the most recently registered hs-cTnT concentration. Hs-cTnT concentrations below the limit of detection of <5 ng/L were assigned a value of 4.9 ng/L. The relative change between the historical and the 0 hour hs-cTnT was calculated as

$$\Delta\text{Hs-cTnT} : (\text{hs-cTnT}_{0\text{h}} - \text{hs-cTnT}_{\text{historical}}) / \text{hs-cTnT}_{\text{historical}}$$

To explore the usefulness of combining information about the historical hs-cTnT concentration with the hs-cTnT concentrations measured at the index visit, a historical-adjusted 0-hour hs-cTnT was calculated as the product of the relative change (ie,  $\Delta\text{hs-cTnT}$ ) and the 0-hour hs-cTnT according to the following equation:

$$\text{Hs-cTnT}_{0\text{h historicaladjusted}} = (\Delta\text{hs-cTnT}) \times (\text{hs-cTnT}_{0\text{h}})$$

In addition to the historical adjusted hs-cTnT, we also investigated the diagnostic performance of using only the 0-hour hs-cTnT or only the  $\Delta\text{hs-cTnT}$ . Different combinations of historical hs-cTnT and 0-hour hs-cTnT concentrations, with corresponding  $\Delta\text{hs-cTnT}$  and historical-adjusted 0-hour hs-cTnT, are presented in online supplemental table 1.

### Statistical analysis

The diagnostic performance of three different hs-cTnT-based diagnostic strategies for MI were evaluated, that is, using (1) only the 0-hour hs-cTnT concentration, (2) using only the relative change between the historical and admission hs-cTnT (ie, the  $\Delta\text{hs-cTnT}$ ) and (3) using the historical-adjusted 0-hour hs-cTnT.

A cut-off value of 52 ng/L for the 0-hour hs-cTnT was used as recommended by the ESC 0/1-hour algorithm for identifying patients at a high risk of MI.<sup>8</sup> Cut-off values for the two other hs-cTnT-based strategies were optimised according to the different measures of the receiver operational curve (ROC). Additional cut-off values were derived to meet the diagnostic performance of a cut-off for the 0-hour hs-cTnT of 52 ng/L. Separate analyses restricted to patients with a second hs-cTnT measured at the ED visit were performed.

Quantile regression was used to estimate predictors of median historical hs-cTnT and  $\Delta\text{hs-cTnT}$ . Logistic regression models were used to estimate the risk of primary and secondary outcomes in patients in different tertiles of relative change between the historical and the 0-hour hs-cTnT, and of historical-adjusted 0-hour hs-cTnT, respectively, using the lowest tertile as the reference. The models were run both unadjusted and adjusted for the following covariates, which were selected a priori based on clinical relevance: age, sex, eGFR, prior MI, heart failure, prior stroke, prior chronic obstructive pulmonary disease, atrial fibrillation, diabetes and treatment with cardiovascular medications. Robust SEs were used. All analyses were conducted using SAS software V9.4.

### Patient and public involvement

Patient or public involvement was not feasible or appropriate for this study.

## RESULTS

### Study population

Altogether, 75 908 patient visits with historical hs-cTnT concentrations available were identified (figure 1). Among these, 27 809 (37%) visits had a positive  $\Delta\text{hs-cTnT}$  and were included in the

**Table 1** Patient characteristics

	Visits with MI	Visits without MI
Number of visits	2686 (9.7)	25123 (90)
Age (years), median (IQR)	76 (66–84)	71 (60–81)
Women	1073 (40)	10999 (44)
Comorbidities		
Prior MI	1213 (45)	6411 (26)
Prior revascularisation	1059 (39)	6719 (27)
Prior stroke	419 (16)	3022 (12)
Heart failure	7968 (32)	957 (36)
Diabetes	890 (33)	6407 (26)
Hypertension	2020 (75)	16693 (66)
Atrial fibrillation	731 (27)	8095 (32)
Dialysis	77 (2.9)	321 (1.3)
COPD	382 (14)	3839 (15)
Laboratory data		
First hs-cTnT concentration (ng/L), median (IQR)	55 (27–161)	14 (8–26)
Historical hs-cTnT concentration, (ng/L), median (IQR)	16 (9–33)	9 (5–18)
Relative change between historical and first hs-cTnT concentration, median (IQR)	166% (52–602)	29% (14–63)
Haemoglobin (g/L), median (IQR)	132 (119–145)	135 (123–146)
Nt-pro-BNP (ng/L), median (IQR)	2480 (664–6593)	1020 (280–3334)
eGFR (mL/min/1.73 m <sup>2</sup> ):		
>60	1510 (56)	17113 (68)
30–59	882 (12)	6574 (26)
<30	292 (11)	1439 (5.7)
Medications		
Aspirin	1507 (56)	10374 (41)
P2Y12 inhibitors*	460 (17)	2850 (11)
Any platelet inhibitor†	1653 (62)	11585 (46)
Beta-blockers	1686 (63)	14391 (57)
ACEi/ARB	1497 (56)	12719 (51)
Statins	1336 (50)	10563 (42)
DOAC	76 (2.8)	1018 (4.1)
OAC‡	386 (14)	4891 (19)
Warfarin	317 (12)	3961 (16)
Mortality within 30 days		
All-cause mortality	163 (6.1)	424 (1.7)
Cardiovascular mortality	126 (4.7)	214 (0.9)
Non-cardiovascular mortality	37 (1.4)	210 (0.8)

Data are presented as n (%), or median with IQR.

\*Includes treatment with clopidogrel, ticagrelor, dipyridimole or prasugrel.

†Includes treatment with aspirin or P2Y12 inhibitors.

‡Includes treatment with NOAC or warfarin.

ACEi/ARB, angiotensin-converting enzyme inhibitor/angiotensin receptor blocker; COPD, chronic obstructive pulmonary disease; DOAC, direct oral anticoagulants; eGFR, estimated glomerular filtration rate; hs-cTnT, high-sensitivity cardiac troponin T; MI, myocardial infarction; Nt-pro-BNP, N-terminal pro b-type natriuretic peptide; OAC, oral anticoagulants.

analyses. A diagnosis of MI was made in conjunction with 2686 (9.7%) of these visits (figure 1, table 1). Patients with MI were older, had a lower eGFR and a higher prevalence of cardiovascular comorbidities.

Patients within the highest tertile of historical-adjusted 0-hour hs-cTnT were older and had a higher burden of cardiovascular disease compared with patients within lower tertiles (online supplemental table 2). The most common discharge diagnoses in

the highest tertile were symptom diagnoses (ICD codes R00-09) followed by MI (online supplemental table 3).

Among the 48 099 (64%) patient visits where the 0-hour hs-cTnT was stable or had decreased compared with the most recent historical measurements (3.6%) MIs occurred (figure 1). Characteristics of these patients are presented in online supplemental table 4. The strongest predictor for historical hs-cTnT concentrations and  $\Delta$ hs-cTnT in both unadjusted and adjusted models was eGFR (online supplemental table 5).

### Performance for diagnosing myocardial infarction

The overall diagnostic performance for an MI diagnosis was lower for the relative  $\Delta$ hs-cTnT, in pairwise comparisons) and slightly lower for the 0-hour hs-cTnT, compared with the historical-adjusted 0-hour hs-cTnT (AUC 0.80, 95% CI 0.79 to 0.81, AUC 0.84, 95% CI 0.83 to 0.85, and AUC 0.85, 95% CI 0.84 to 0.86, respectively, with p values of <0.0001 and 0.011 in pairwise comparisons with the historical-adjusted 0-hour hs-cTnT) (figure 2A–C).

The adjusted risk of MI was increased within higher tertiles of both relative  $\Delta$ hs-cTnT and historical-adjusted 0-hour hs-cTnT, being 2-fold and 17-fold elevated (adjusted OR 2.08, 95% CI 1.71 to 2.52, and adjusted OR 16.7, 95% CI 14.0 to 20.0) at the intermediate and highest tertiles of historical-adjusted 0-hour hs-cTnT, respectively (figure 3).

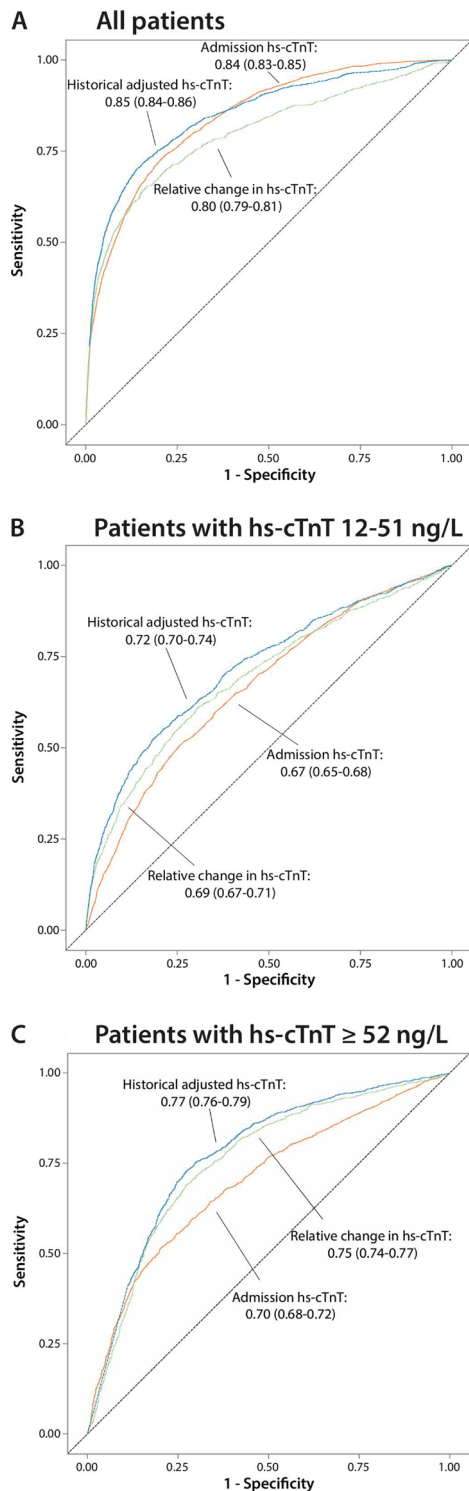
A cut-off for the relative  $\Delta$ hs-cTnT optimised according to the Youden's J Index yielded a specificity of 83.4 (80.3–86.6), a positive predictive value (PPV) of 30.0 (28.4–30.7) and a positive likelihood ratio (LR+) of 3.92 (3.78–4.08), while corresponding numbers for historical-adjusted 0-hour hs-cTnT concentrations were 86.0 (95% CI 82.8 to 89.4), 34.9 (95% CI 33.6 to 36.3) and 5.02 (95% CI 4.83 to 5.22), respectively (table 2).

### Comparison of diagnostic performance

An admission hs-cTnT concentration of  $\geq 52$  ng/L identified 3629 (13%) high-risk patients, of whom 1411 (39%) had an MI, resulting in a specificity of 91.2% (95% CI 87.8 to 94.7), a PPV of 38.9 (95% CI 37.4 to 40.4) and a LR+ of 5.95 (95% CI 5.73 to 6.18), respectively (table 3, figure 4). Using a cut-off value for historical hs-cTnT-adjusted admission hs-cTnT calibrated to have the same specificity (91.2%) as a cut-off of 52 ng/L for the 0-hour hs-cTnT generated a similar proportion of 'true' negatives, but identified a larger number of high-risk patients (3852, 14%) among whom a higher fraction suffered an MI (1642, 43%) (table 3). Thus, this strategy identified 16% more MIs (1642 vs 1411 patients) than a 0-hour hs-cTnT  $\geq 52$  ng/L. The corresponding PPV was 42.6 (95% CI 41.0 to 44.3) and the LR+ was 6.95 (95% CI 6.69 to 7.22), respectively.

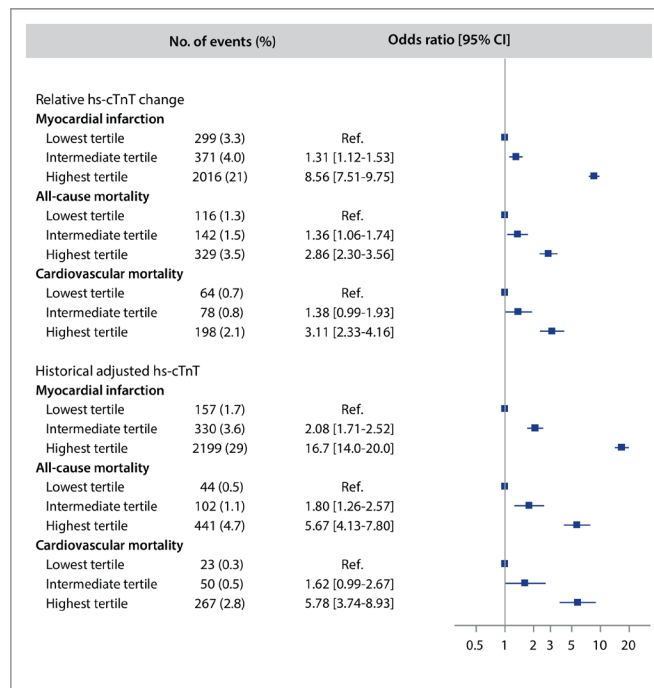
A cut-off value for historical hs-cTnT-adjusted admission hs-cTnT calibrated to identify a similar proportion of high-risk patients (13%) as with an admission hs-cTnT concentration of  $\geq 52$  ng/L resulted in a specificity of 91.9 (95% CI 88.5 to 95.5), a PPV of 44.3 (95% CI 42.6 to 46.0) and a LR+ of 7.43 (95% CI 7.16 to 7.72), respectively, and identified 14% more patients with MI (1608 vs 1411 patients) (table 3).

Altogether, 1275 (5.3%) MIs occurred among all other 24 180 patients assigned to low or intermediate risk according to the 0-hour hs-cTnT (figure 4). The application of a cut-off for the historical hs-cTnT-adjusted admission hs-cTnT with a similar specificity (91.2%) reclassified 1300 (5.4%) patients in the low-risk or intermediate-risk group to high-risk, of whom almost one-third (28%) had an MI. Correspondingly, this strategy identified two-thirds (70%)



**Figure 2** Receiver operating characteristic curves (ROCs) of the different hs-cTnT-based strategies for diagnosing myocardial infarction. (A) All visits. (B) vVsits with 0-hour hs-cTnT 12–51 ng/L. (C) Visits with 0-hour hs-cTnT ≥52 ng/L. hs-cTnT, high-sensitivity cardiac troponin T.

of patients assigned to the high-risk group according to the 0-hour hs-cTnT, in whom 50% had an MI. In a separate analysis on all patients who had a second hs-cTnT measured, this approach identified 1051 (15%) high-risk patients among those assigned to the observational zone (7025, 47%) according to the ESC 0/1-hour algorithm, and resulted in a specificity, PPV and LR + of 86.3 (77.2–96.7),



**Figure 3** Adjusted risk of myocardial infarction, all-cause mortality and cardiovascular mortality within tertiles of relative  $\Delta$ hs-cTnT and historical-adjusted hs-cTnT. The model was adjusted for the following covariates: age, sex, eGFR, prior MI, heart failure, prior stroke, prior chronic obstructive pulmonary disease, atrial fibrillation, diabetes, and treatment with aspirin, P2Y12 inhibitors, oral anticoagulants, beta-blockers, angiotensin-converting enzyme inhibitor/angiotensin receptor blockers, and statins. eGFR, estimated glomerular filtration rate; hs-cTnT, high-sensitivity cardiac troponin T; MI, myocardial infarction.

12.9 (11.6–14.5) and 3.12 (2.83–3.54), respectively (online supplemental figure 1).

**All-cause mortality and cardiovascular mortality**

Altogether, 587 (2.1%) patients died within 30 days of the index visit, of whom 163 (28%) had an MI at the index presentation (table 1). The adjusted risk of all-cause mortality within 30 days was almost threefold and sixfold higher in patients within the highest tertile of relative  $\Delta$ hs-cTnT and historical-adjusted 0-hour hs-cTnT, compared with the lowest tertile (OR 2.86, 95%CI 2.30 to 3.56, and OR 5.67, 95%CI 4.13 to 7.80, respectively) (figure 3). A total of 340 (1.2%) cardiovascular deaths occurred. The corresponding adjusted risk was most notably increased in patients within the highest tertile of historical-adjusted 0-hour hs-cTnT (OR 5.78, 95%CI 3.74 to 8.93).

In patient with a negative  $\Delta$ hs-cTnT >20%, 78 (5.8%) and 179 (1.2%) deaths occurred in patients with and without MI, respectively, while corresponding numbers in patients with negative  $\Delta$ hs-cTnT of 0% to 20% were 24 (5.9%) and 137 (0.4%) (online supplemental table 4).

**DISCUSSION**

Using a large cohort of patients presenting with chest pain to the ED, we investigated different strategies for incorporating historical hs-cTnT measurements in the management of patients with chest pain. In clinical practice, more than one-third of all patients with chest pain in the ED with troponin testing have had hs-cTnT concentrations measured at prior visits.<sup>9 14</sup>

**Table 2** Diagnostic performance of relative change between historical and admission hs-cTnT concentrations for myocardial infarction

	Cut-off level ( $\Delta$ )	Sensitivity (95% CI)	Specificity (95% CI)	PPV (95% CI)	NPV (95% CI)	LR+ (95% CI)
Relative change between historical and admission hs-cTnT						
ROC-optimised cut-off values for MI						
Youden's J Index	85%	65.2 [62.7 to 67.7]	83.4 [80.3 to 86.6]	30.0 [28.4 to 30.7]	95.7 [92.1 to 99.4]	3.92 [3.78 to 4.08]
Minimised Euclidean distance of sensitivity and specificity	67%	70.1 [67.5 to 72.9]	77.8 [74.9 to 80.8]	25.3 [24.3 to 26.2]	96.1 [92.5 to 99.8]	3.16 [3.04 to 3.28]
Min (sensitivity-specificity)	59%	73.0 [70.3 to 75.9]	73.0 [70.3 to 75.9]	22.5 [21.6 to 23.3]	96.2 [92.6 to 99.9]	2.71 [2.61 to 2.81]
Sensitivity optimised cut-off ( $\geq 90\%$ )	18%	90.0 [86.6 to 93.4]	32.3 [31.1 to 33.6]	12.4 [12.0 to 12.9]	96.8 [93.2 to 100]	1.33 [1.28 to 1.38]
Specificity optimised cut-off ( $\geq 90\%$ )	125%	56.4 [54.3 to 58.6]	90.1 [86.7 to 93.6]	37.8 [36.4 to 39.2]	95.1 [91.5 to 98.8]	5.68 [5.46 to 5.90]
Historical hs-cTnT-adjusted admission hs-cTnT						
ROC-optimised cut-off values for MI						
Youden's J Index	23.1	70.1 [67.4 to 72.8]	86.0 [82.8 to 89.4]	34.9 [33.6 to 36.3]	96.4 [92.8 to 100]	5.02 [4.83 to 5.22]
Minimised Euclidean distance of sensitivity and specificity	15.3	75.1 [72.3 to 78.1]	80.3 [77.4 to 83.4]	29.0 [27.9 to 30.1]	96.8 [93.2 to 100]	3.81 [3.67 to 3.96]
Min (sensitivity-specificity)	13.1	77.3 [74.4 to 80.3]	77.1 [74.2 to 80.1]	26.5 [25.5 to 27.5]	96.9 [93.3 to 100]	3.38 [3.25 to 3.51]
Sensitivity optimised cut-off ( $\geq 90\%$ )	4.48	90.1 [86.7 to 93.6]	52.4 [50.4 to 54.4]	16.8 [16.2 to 17.5]	98.0 [94.4 to 100]	1.89 [1.82 to 1.97]
Specificity optimised cut-off ( $\geq 90\%$ )	34.6	63.9 [61.5 to 66.4]	90.0 [86.6 to 93.5]	40.6 [39.1 to 42.2]	95.9 [92.3 to 99.6]	6.39 [6.15 to 6.64]

hs-cTnT, high-sensitivity cardiac troponin T; LR+, positive likelihood ratio; NPV, negative predictive value; PPV, positive predictive value.

We report three major findings. First, we found that a novel hs-cTnT-based strategy that incorporated historical hs-cTnT and 0-hour hs-cTnT concentrations identified a larger number of high-risk patients, without more false positives, and concomitantly identified 4% more MIs, in absolute terms, than a 0-hour hs-cTnT of  $\geq 52$  ng/L. The currently recommended ESC 0/1-hour algorithm triage patients with a 0-hour hs-cTnT of  $\geq 52$  ng/L to high-risk group, while the majority of patients would be assigned to an observational or low-risk group.<sup>5 7 15 16</sup> This threshold has been found to triage >10% of patients with chest pain towards rule-in with a corresponding PPV for MI of 80%, while others have reported a PPV around 70%–75% in patients who meet the rule-in criteria of the ESC 0/1-hour algorithm at 1 hour.<sup>15 17–19</sup> The proportion of patients with a 0-hour hs-cTnT  $\geq 52$  ng/L was similar compared with that reported in a recent large multicentre diagnostic study on chest pain cohorts, although the MI incidence and concomitant PPV for MI was substantially lower.<sup>15</sup> This observation likely reflects the effect of variable patient selection where the PPV will invariably be affected by the MI

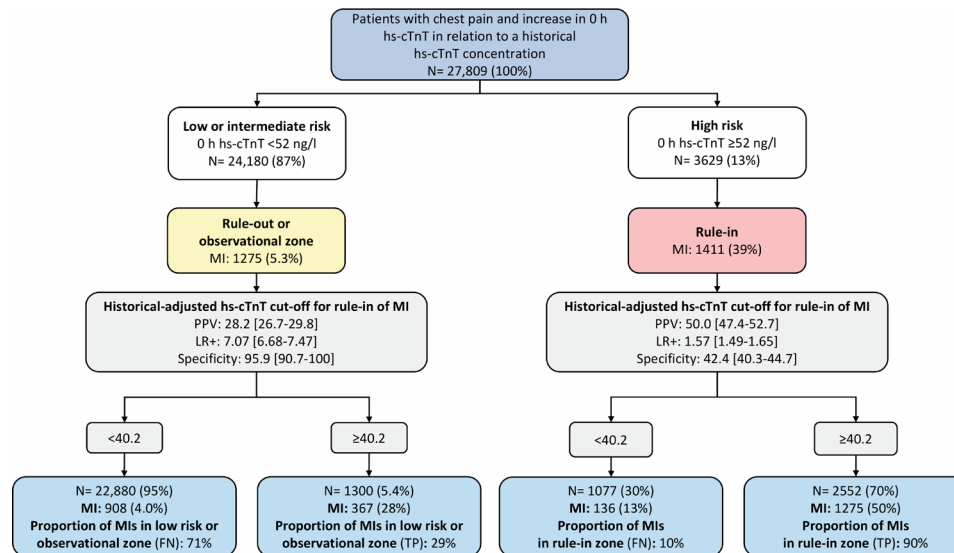
incidence among patients who undergo cardiac troponin testing in the ED.<sup>20</sup> That said, our findings demonstrate that incorporating historical hs-cTnT measurements can improve the identification of high-risk patients, which ultimately could lead to prognostic improvements as a rapid diagnosis of MI is essential for the early initiation of evidence-based therapies.<sup>8</sup> However, neither the 0-hour hs-cTnT or this novel approach resulted in PPV and/or LR for rule-in of MI that would motivate the use of any of these strategies alone when identifying patients eligible for early coronary angiography and possible intervention.<sup>16</sup> Nonetheless, prior studies indicate that the addition of clinical information could improve the diagnostic accuracy of hs-cTnT-based strategies.<sup>21–23</sup> As such, it seems reasonable to believe that adding information, such as risk scores or ECG, would further improve the performance of the present strategy.

Second, we found that 5.4% of patients assigned to low-risk or intermediate-risk groups according to the 0-hour hs-cTnT were reclassified as high-risk patients with the novel strategy. Prior studies on selected chest pain cohorts have typically reported

**Table 3** Diagnostic performance of different measures of hs-cTnT concentrations for myocardial infarction

	Admission hs-cTnT		Historical hs-cTnT-adjusted admission hs-cTnT			Relative change between historical and admission hs-cTnT				
			Specificity	No. patients ruled-in	Sensitivity	PPV	Specificity	No. patients ruled-in	Sensitivity	PPV
Calibration criterion vs admission hs-cTnT	n/a									
Cut-off level	$\geq 52$ ng/L	$\geq 40.2$	$\geq 44.4$	$\geq 75.8$	$\geq 30.9$	$\geq 137\%$	$\geq 137\%$	$\geq 150\%$	$\geq 130\%$	
Specificity, % (95% CI)	91.2 (87.8 to 94.7)	91.2 (87.8 to 94.8)	91.9 (88.5 to 95.5)	94.8 (91.2 to 98.5)	89.1 (85.7 to 92.5)	91.2 (87.8 to 94.8)	91.3 (87.9 to 94.9)	92.5 (89.1 to 96.1)	90.7 (87.3–94.3)	
Rule-in, n (%)	3629 (13)	3852 (14)	3631 (13)	2724 (9.8)	4499 (16)	3666 (13)	3648 (13)	3287 (12)	3813 (14)	
Sensitivity, % (95% CI)	52.5 (50.6 to 54.6)	61.1 (58.8 to 63.5)	59.9 (57.6 to 62.2)	52.5 (50.6 to 54.6)	65.3 (62.9 to 67.8)	54.2 (52.2 to 56.4)	54.2 (52.1 to 56.3)	52.3 (50.4 to 54.4)	55.2 (53.2 to 57.4)	
PPV, % (95% CI)	38.9 (37.4 to 40.4)	42.6 (41.0 to 44.3)	44.3 (42.6 to 46.0)	51.8 (49.9 to 53.8)	39.0 (37.5 to 40.5)	39.7 (38.3 to 41.3)	39.9 (38.4 to 41.4)	42.8 (41.2 to 44.4)	38.9 (37.5 to 40.4)	
MI $\leq 30$ days, n (%)	1411 (39)	1642 (43)	1608 (44)	1411 (51)	1754 (39)	1457 (40)	1455 (40)	1406 (43)	1484 (39)	
FP, n (%)	2218 (61)	2210 (57)	2023 (56)	1313 (49)	2745 (61)	2209 (60)	2193 (60)	1881 (57)	2329 (61)	
Efficacy, % (95% CI)	87.4 (84.2 to 90.8)	88.3 (85.0 to 91.7)	88.8 (85.5 to 92.3)	90.7 (87.3 to 94.2)	86.8 (83.5 to 90.2)	87.6 (84.4 to 91.0)	87.7 (84.4 to 91.1)	88.6 (85.3 to 92.1)	87.3 (84.0 to 90.7)	
LR+ (95% CI)	5.95 (5.73 to 6.18)	6.95 (6.69 to 7.22)	7.43 (7.16 to 7.72)	10.1 (9.68 to 10.4)	5.98 (5.75 to 6.21)	6.17 (5.94 to 6.41)	6.21 (6.00 to 6.47)	6.99 (6.73 to 7.26)	5.96 (5.74 to 6.19)	

FP, false positives; hs-cTnT, high-sensitivity cardiac troponin T; LR+, positive likelihood ratio; MI, myocardial infarction; NPV, negative predictive value; PPV, positive predictive value.



**Figure 4** Diagnostic performance of historical-adjusted hs-cTnT for diagnosing myocardial infarction in patients risk-stratified according to the ESC 0/1-hour algorithm. The numbers are shown with percent in parentheses. Note: No patients had a very low risk according to the 0-hour hs-cTnT (ie, a 0-hour hs-cTnT < 5 ng/L), as only patients with a positive  $\Delta$ hs-cTnT were included. FN, false negative; hs-cTnT, high-sensitivity cardiac troponin T; LR+, positive likelihood ratio; MI, myocardial infarction; PPV, positive predictive value; TP, true positive.

that approximately 60% and 25% of patients are triaged towards rule-out and observational zone according to the ESC 0/1-hour algorithm, with varying MI incidence in patients assigned to the latter group.<sup>5 15 16</sup> Management of patients in the observational zone may be particularly challenging as careful considerations are needed to identify candidates suitable for invasive or non-invasive cardiac imaging.<sup>8</sup> In the present study, almost one of three patients who were reclassified to high risk according to the novel strategy had a final MI diagnosis. Thus, historical hs-cTnT concentrations may help to discriminate patients with a high clinical likelihood of MI from those with low-to-intermediate likelihood.

Third, relative  $\Delta$ hs-cTnT and historical-adjusted 0-hour hs-cTnT were both associated with all-cause and cardiovascular mortality. These observations indicate that historical-adjusted 0-hour hs-cTnT could add clinical prognostic value in patients with chest pain regardless of the final diagnosis, considering that the vast majority of patients did not have an acute MI. Overall, the most common diagnoses at discharge according to ICD codes were symptom diagnoses.

The use of historical-adjusted 0-hour hs-cTnT could potentially enhance the ability to identify individuals at a high risk of cardiovascular events and death, and to target interventions aiming at reducing the corresponding risks.

### Strengths

To our knowledge, this is the first study that has systematically investigated the usefulness of historical hs-cTnT concentrations to improve strategies for early rule-in of MI in the ED. The study data was obtained from validated healthcare registers with complete nationwide coverage, and thus had virtually no loss to follow-up.<sup>10 11</sup> We had complete data on all covariates used in the statistical analyses throughout.

The study was conducted at several Swedish hospital sites in different regions and demographic environments. We believe that the ability to apply the study findings to other national hospitals and to healthcare settings in other countries with a similar healthcare level is high.

### Limitations

Visits with a negative or no  $\Delta$ hs-cTnT were not used in the analyses, which limited the generalisability to patients with an increase between historical hs-cTnT and 0-hour hs-cTnT concentrations. The inclusion of negative  $\Delta$ hs-cTnT would have relied on the assumption that any  $\Delta$ hs-cTnT have the same diagnostic implication regardless of positive or negative change, or that there is a graded association between the  $\Delta$ hs-cTnT, starting from negative to positive  $\Delta$ hs-cTnT, and the outcome. We argue that none of these assumptions would have been appropriate. Also, the additive value of historical hs-cTnT concentrations to identify high-risk patients with a negative or no  $\Delta$ hs-cTnT may be limited considering that the number of MIs was rather low within this group (3.7%). Our findings indicate that such hs-cTnT concentrations may instead be helpful to identify those with low risk in whom outpatient management after ED discharge may be appropriate, preferably in selected cases among patients with no or small negative  $\Delta$ hs-cTnT in whom the overall observed MI risk was low (1.3%).

To mimic clinical practice and to avoid selection bias, we used the most recent hs-cTnT measurement to define the historical hs-cTnT concentration regardless of the clinical setting where it was measured. Consequently, some patients with an acute medical condition associated with myocardial injury in conjunction with the historical hs-cTnT measurement may have been incorrectly classified towards a lower risk with the novel historical approach. Thus, it is important to emphasise that some patients not assigned to the high-risk group with the novel historical approach may still be assessed as high-risk patients based on all other medical information.

Lastly, future research is warranted to explore how the findings from this study could be applied in clinical practice.

### CONCLUSIONS

We found that a novel historical-hs-cTnT-based strategy improved the identification of patients with chest pain at a high risk of an evolving MI, compared with using only measurements available at the index visit. Of note, 5.4% of the patients assigned

to low-risk or intermediate-risk groups were reclassified to high risk, among whom almost one of three had an MI.

**Correction notice** This article has been corrected since it was first published. The open access licence has been updated to CC BY.

**Acknowledgements** The authors would like to thank Professor Martin J. Holzmann (deceased 5 June 2021) for his prior research leadership.

**Contributors** Both authors made substantial contribution to the study concept, design of the study protocol. The acquisition of data was conducted by AR. The authors contributed equally to the analysis and interpretation of data. The manuscript was drafted by AR, and critically revised for important intellectual content and finally approved by both authors. GE is responsible for the overall content as guarantor.

**Funding** No specific funding was obtained for this study. The work was supported by the Stockholm County Council (20200935 to AR), the Swedish Research Council (2017-01954 to GE) and Region Stockholm (clinical research appointment for GE). The sponsors had no role in the design or conduct of this study.

**Competing interests** None declared.

**Patient and public involvement** Patients and/or the public were not involved in the design, or conduct, or reporting or dissemination plans of this research.

**Patient consent for publication** Not applicable.

**Ethics approval** This study involves human participants and was approved by the Regional Ethics Review Board in Stockholm, ID 2018/1089-31, and conformed to the ethical guidelines of the 1975 Declaration of Helsinki. Informed consent was not required to conduct this retrospective observational cohort study.

**Provenance and peer review** Not commissioned; externally peer reviewed.

**Data availability statement** All data relevant to the study are included in the article or uploaded as supplementary information.

**Supplemental material** This content has been supplied by the author(s). It has not been vetted by BMJ Publishing Group Limited (BMJ) and may not have been peer-reviewed. Any opinions or recommendations discussed are solely those of the author(s) and are not endorsed by BMJ. BMJ disclaims all liability and responsibility arising from any reliance placed on the content. Where the content includes any translated material, BMJ does not warrant the accuracy and reliability of the translations (including but not limited to local regulations, clinical guidelines, terminology, drug names and drug dosages), and is not responsible for any error and/or omissions arising from translation and adaptation or otherwise.

**Open access** This is an open access article distributed in accordance with the Creative Commons Attribution 4.0 Unported (CC BY 4.0) license, which permits others to copy, redistribute, remix, transform and build upon this work for any purpose, provided the original work is properly cited, a link to the licence is given, and indication of whether changes were made. See: <https://creativecommons.org/licenses/by/4.0/>.

#### ORCID iD

Andreas Roos <http://orcid.org/0000-0001-6402-5221>

#### REFERENCES

- Giannitsis E, Kurz K, Hallermayer K, *et al*. Analytical validation of a high-sensitivity cardiac troponin T assay. *Clin Chem* 2010;56:254–61.
- Giannitsis E, Becker M, Kurz K, *et al*. High-Sensitivity cardiac troponin T for early prediction of evolving non-ST-segment elevation myocardial infarction in patients with suspected acute coronary syndrome and negative troponin results on admission. *Clin Chem* 2010;56:642–50.
- Korley FK, Schulman SP, Sokoll LJ, *et al*. Troponin elevations only detected with a high-sensitivity assay: clinical correlations and prognostic significance. *Acad Emerg Med* 2014;21:727–35.
- Mueller M, Celik S, Biener M, *et al*. Diagnostic and prognostic performance of a novel high-sensitivity cardiac troponin T assay compared to a contemporary sensitive cardiac troponin I assay in patients with acute coronary syndrome. *Clin Res Cardiol* 2012;101:837–45.
- Mueller C, Giannitsis E, Christ M, *et al*. Multicenter evaluation of a 0-Hour/1-Hour algorithm in the diagnosis of myocardial infarction with high-sensitivity cardiac troponin T. *Ann Emerg Med* 2016;68:76–87.
- Neumann JT, Sörensen NA, Schwemer T, *et al*. Diagnosis of myocardial infarction using a high-sensitivity troponin I 1-hour algorithm. *JAMA Cardiol* 2016;1:397–404.
- Chapman AR, Anand A, Boeddinghaus J, *et al*. Comparison of the efficacy and safety of early rule-out pathways for acute myocardial infarction. *Circulation* 2017;135:1586–96.
- Collet J-P, Thiele H, Barbato E, *et al*. 2020 ESC guidelines for the management of acute coronary syndromes in patients presenting without persistent ST-segment elevation. *Eur Heart J* 2021;42:1289–367.
- Roos A, Holzmann MJ. Use of historical high-sensitivity cardiac troponin T levels to rule out myocardial infarction. *Open Heart* 2021;8:e001682.
- Ludvigsson JF, Andersson E, Ekblom A, *et al*. External review and validation of the Swedish national inpatient register. *BMC Public Health* 2011;11:450.
- Brooke HL, Talbäck M, Hörnblad J, *et al*. The Swedish cause of death register. *Eur J Epidemiol* 2017;32:765–73.
- Jernberg T, Attebring MF, Hambraeus K, *et al*. The Swedish web-system for enhancement and development of evidence-based care in heart disease evaluated according to recommended therapies (SWEDEHEART). *Heart* 2010;96:1617–21.
- Levey AS, Stevens LA, Schmid CH, *et al*. A new equation to estimate glomerular filtration rate. *Ann Intern Med* 2009;150:604–12.
- Roos A, Mohammad MA, Ekelund U, *et al*. Adding historical high-sensitivity troponin T results to rule out acute myocardial infarction. *Eur Heart J Acute Cardiovasc Care* 2022;11:215–23.
- Twerenbold R, Neumann JT, Sörensen NA, *et al*. Prospective validation of the 0/1-h algorithm for early diagnosis of myocardial infarction. *J Am Coll Cardiol* 2018;72:620–32.
- Pickering JW, Greenslade JH, Cullen L, *et al*. Assessment of the European society of cardiology 0-Hour/1-Hour algorithm to rule-out and rule-in acute myocardial infarction. *Circulation* 2016;134:1532–41.
- Reichlin T, Schindler C, Drexler B, *et al*. One-hour rule-out and rule-in of acute myocardial infarction using high-sensitivity cardiac troponin T. *Arch Intern Med* 2012;172:1211.
- Boeddinghaus J, Nestelberger T, Twerenbold R, *et al*. Impact of age on the performance of the ESC 0/1h-algorithms for early diagnosis of myocardial infarction. *Eur Heart J* 2018;39:3780–94.
- Twerenbold R, Badertscher P, Boeddinghaus J, *et al*. 0/1-Hour triage algorithm for myocardial infarction in patients with renal dysfunction. *Circulation* 2018;137:436–51.
- Shah ASV, Sandoval Y, Noaman A, *et al*. Patient selection for high sensitivity cardiac troponin testing and diagnosis of myocardial infarction: prospective cohort study. *BMJ* 2017;359:j4788.
- Nilsson T, Johannesson E, Lundager Forberg J, *et al*. Diagnostic accuracy of the heart pathway and EDACS-ADP when combined with a 0-hour/1-hour hs-cTnT protocol for assessment of acute chest pain patients. *Emerg Med J* 2021;38:808–13.
- Carlton EW, Khattab A, Greaves K. Identifying patients suitable for discharge after a Single-Presentation high-sensitivity troponin result: a comparison of five established risk scores and two high-sensitivity assays. *Ann Emerg Med* 2015;66:635–45.
- Kavsak PA, Neumann JT, Cullen L, *et al*. Clinical chemistry score versus high-sensitivity cardiac troponin I and T tests alone to identify patients at low or high risk for myocardial infarction or death at presentation to the emergency department. *CMAJ* 2018;190:E974–84.

## SUPPLEMENTAL MATERIAL

### **Using Historical Cardiac Troponins to Identify Patients at a High Risk of Myocardial Infarction**

Andreas Roos<sup>a,b</sup>, MD, PhD, Gustaf Edgren<sup>b,c</sup>, MD, PhD

<sup>a</sup>Department of Emergency and Reparative Medicine, Karolinska University Hospital, Huddinge, Stockholm, Sweden.

<sup>b</sup>Department of Medicine, Clinical Epidemiology Division, Karolinska Institutet, Solna, Stockholm, Sweden.

<sup>c</sup>Department of Cardiology, Södersjukhuset, Stockholm, Sweden.



**TABLE OF CONTENTS**

Supplemental Table 1.....	3
Supplemental Table 2.....	4
Supplemental Table 3.....	6
Supplemental Table 4.....	7
Supplemental Table 5.....	9
Supplemental Figure 1.....	11

**Supplemental Table 1.** Combination of historical hs-cTnT concentrations and 0 h hs-cTnT with corresponding relative change and historical-adjusted 0 h hs-cTnT

<b>Historical hs-cTnT</b> (ng/l)	<b>0 hs-cTnT</b> (ng/l)	<b>Relative change</b> (%)	<b>Historical-adjusted 0 h hs-cTnT</b>
5	20	300	60.0
10	25	150	37.5
15	30	100	30.0
20	35	75	26.3
25	40	60	24.0
30	45	50	22.5
35	50	43	21.4
40	55	38	20.6
45	60	33	20.0
50	65	30	19.5
55	70	27	19.1
60	75	25	18.8
65	80	23	18.5
70	85	21	18.2
75	90	20	18.0
80	95	19	17.8
85	100	18	17.6
90	105	17	17.5
95	110	16	17.4
100	115	15	17.3

Abbreviations: hs-cTnT: high-sensitivity cardiac troponin T.

**Supplemental Table 2.** Baseline characteristics according to tertiles of historical hs-cTnT-adjusted admission hs-cTnT

	Historical hs-cTnT-adjusted admission hs-cTnT		
	Lowest tertile	Intermediate tertile	Highest tertile
Number of visits	9132 (33)	9226 (33)	9451 (34)
Age (years), median (IQR)	68 (56-78)	72 (61-81)	76 (65-84)
Women	4087 (45)	4063 (44)	3922 (42)
<b>Comorbidities</b>			
Prior MI	2166 (24)	2412 (26)	3046 (32)
Prior revascularization	2406 (26)	2556 (28)	2816 (30)
Prior stroke	917 (10)	1112 (12)	1412 (15)
Heart failure	2297 (25)	2915 (32)	3713 (39)
Diabetes	2026 (22)	6793 (26)	2838 (30)
Hypertension	5570 (61)	6305 (68)	6838 (72)
Atrial fibrillation	2422 (27)	3057 (33)	3347 (35)
Dialysis	60 (0.7)	75 (0.8)	263 (2.8)
COPD	1180 (13)	1451 (16)	1590 (17)
<b>Laboratory data</b>			
First hs-cTnT concentration (ng/l), median (IQR)	9 (6-15)	13 (9-17)	25 (20-71)
Historical hs-cTnT concentration, (ng/l), median (IQR)	8 (4.9-13)	9 (5.4-17)	14 (7-29)
Relative change between historical and first hs-cTnT concentration, median (IQR)	11% (5-18)	33% (23-48)	108% (60-217)
Hemoglobin (g/l), median (IQR)	137 (127-148)	136 (124-147)	131 (118-143)
Nt-pro-BNP (ng/l), median (IQR)	519 (141-1730)	884 (268-2810)	2098 (624-5770)
eGFR (ml/min/1.73 m <sup>2</sup> ):			
>60	7159 (78)	6357 (69)	5105 (54)
30-59	1766 (19)	2507 (27)	3184 (34)
<30	207 (2.3)	362 (3.9)	1162 (12)
<b>Medications</b>			
Aspirin	3534 (39)	3944 (43)	4403 (47)

P2Y12 inhibitors*	1070 (12)	1039 (11)	1201 (13)
Any platelet inhibitor†	3940 (43)	4389 (48)	4909 (52)
Beta-blockers	4855 (53)	5415 (59)	5807 (61)
ACEi/ARB	4325 (47)	4800 (52)	5091 (54)
Statins	3754 (41)	4012 (43)	4133 (44)
OAC‡	1531 (17)	1890 (20)	7595 (20)
Warfarin	1207 (13)	1564 (17)	1507 (16)
DOAC	358 (3.9)	360 (3.9)	376 (4.0)

Data are presented as n (%), or median with IQR. \*Includes treatment with Clopidogrel, Tikagrelor, Dipyridamol or Prasugel. †Includes treatment with Aspirin or P2Y12 inhibitors. ‡Includes treatment with DOAC or Warfarin. Abbreviations: ACEi/ARB: angiotensin-converting enzyme inhibitor/angiotensin receptor blocker; COPD: chronic obstructive pulmonary disease; hs-cTnT: high-sensitivity cardiac troponin T; eGFR: estimated glomerular filtration rate; MI: myocardial infarction; DOAC: direct oral anticoagulants; Nt-pro-BNP: N-terminal pro b-type natriuretic peptide; OAC: oral anticoagulants.

**Supplemental Table 3.** The most common discharge diagnoses according to tertiles of historical-adjusted 0 h hs-cTnT

	<b>Historical-adjusted 0 h hs-cTnT</b>		
	<b>Lowest tertile</b>	<b>Intermediate tertile</b>	<b>Highest tertile</b>
<b>Discharge diagnoses</b>			
#1 Diagnosis	Symptom diagnoses (R00-R09), 4147 (51)	Symptom diagnoses (R00-R09), 3712 (45)	Symptom diagnoses (R00-R09), 2314 (27)
#2 Diagnosis	AP (I20.9), 380 (4.7)	AP (I20.9), 431 (5.2)	MI (I21, I22), 1510 (18)
#3 Diagnosis	Unspecified pain, (M79), 302 (3.7)	HF, (I50), 361 (4.3)	AF (I48), 525 (6.2)
#4 Diagnosis	General symptoms and signs of illness (R50-R69), 247 (3.0)	Unspecified pain, (M79), 273 (3.3)	HF (I50), 525 (6.2)
#5 Diagnosis	Abdominal symptoms (R10-19), 232 (2.9)	General symptoms and signs of illness (R50-R69), 208 (2.5)	AP (I20.9), 382 (4.5)

Note: data are presented as proportions of patients among visits for which there was a final diagnosis available. Missing data within each tertile: 983 (11) (lowest), 916 (9.9) (intermediate), and 970 (10) (highest). Abbreviations: AP: angina pectoris; HF: heart failure; hs-cTnT: high-sensitivity cardiac troponin T; MI: myocardial infarction.

**Supplemental Table 4.** Patient characteristics in visits with a negative or 0  $\Delta$  hs-cTnT

	Visits with negative $\Delta$ hs-cTnT >20%		Visits with negative $\Delta$ hs-cTnT of 0 to 20%§	
	Visits with MI	Visits without MI	Visits with MI	Visits without MI
Number of visits	1350 (8.2)	15,191 (92)	404 (1.3)	31,154 (99)
Age (years), median (IQR)	75 (65-85)	69 (56-79)	74 (64-84)	57 (44-70)
Women	780 (58)	8578 (56)	251 (62)	15,003 (48)
<b>Comorbidities</b>				
Prior MI	1172 (87)	6410 (42)	276 (68)	5059 (16)
Prior revascularization	758 (56)	5822 (38)	209 (52)	5555 (18)
Prior stroke	200 (15)	1604 (11)	78 (19)	1971 (6.3)
Heart failure	544 (40)	4752 (31)	173 (43)	5183 (17)
Diabetes	505 (37)	3644 (24)	153 (38)	4810 (15)
Hypertension	1062 (79)	9865 (65)	320 (79)	13,078 (42)
Atrial fibrillation	407 (30)	4769 (31)	122 (30)	5760 (18)
Dialysis	43 (3.2)	232 (1.5)	12 (3.0)	185 (0.6)
COPD	145 (11)	1993 (13)	70 (17)	2700 (8.7)
<b>Laboratory data</b>				
First hs-cTnT concentration (ng/l), median (IQR)	31 (16-64)	10 (6-18)	22 (11-41)	4.9 (4.9-9)
Historical hs-cTnT concentration, (ng/l), median (IQR)	172 (58-570)	26 (12-85)	24 (12-46)	4.9 (4.9-10)
Relative change between historical and first hs-cTnT concentration, median (IQR)	-76 (-92, -48)	-46 (-79, -30)	-8 (-14, -2)	0 (-7.5, 0)
Hemoglobin (g/l), median (IQR)	129 (116-141)	135 (123-146)	130 (119-142)	137 (127-148)
Nt-pro-BNP (ng/l), median (IQR)	2580 (831-6670)	891 (248-2859)	1075 (247-3620)	369 (91-1520)
eGFR (ml/min/1.73 m <sup>2</sup> ):				
>60	712 (53)	11,322 (75)	234 (58)	27,224 (87)
30-59	468 (35)	3242 (21)	120 (30)	3360 (11)
<30	170 (13)	627 (4.1)	50 (12)	570 (1.8)

**Medications**

Aspirin	857 (63)	7001 (46)	257 (64)	8418 (27)
P2Y12 inhibitors*	403 (30)	2925 (19)	102 (25)	2552 (8.2)
Any platelet inhibitor†	924 (68)	7749 (51)	276 (68)	9350 (30)
Beta-blockers	944 (70)	9419 (62)	287 (71)	12,009 (39)
ACEi/ARB	832 (62)	8217 (54)	257 (64)	10,132 (33)
Statins	756 (56)	7036 (46)	234 (58)	8793 (28)
OAC‡	167 (12)	2763 (18)	59 (15)	3514 (11)
Warfarin	135 (10)	2155 (14)	48 (12)	2792 (9.0)
DOAC	38 (2.8)	669 (4.4)	12 (3.0)	814 (2.6)

**Mortality within 30 days**

All-cause mortality	78 (5.8)	179 (1.2)	24 (5.9)	137 (0.4)
Cardiovascular mortality	64 (4.7)	95 (0.6)	18 (4.5)	56 (0.2)
Non-cardiovascular mortality	14 (1.0)	84 (0.6)	6 (1.5)	81 (0.3)

Data are presented as n (%), or median with IQR. \*Includes treatment with Clopidogrel, Tikagrelor, Dipyridamol or Prasugel. †Includes treatment with Aspirin or P2Y12 inhibitors. ‡Includes treatment with DOAC or Warfarin. §The interval of 0 to 20% was chosen as only a small proportion of patients had an exact  $\Delta$ hs-cTnT of zero.

Abbreviations: ACEi/ARB: angiotensin-converting enzyme inhibitor/angiotensin receptor blocker; COPD: chronic obstructive pulmonary disease; hs-cTnT: high-sensitivity cardiac troponin T; eGFR: estimated glomerular filtration rate; MI: myocardial infarction; DOAC: direct oral anticoagulants; Nt-pro-BNP: N-terminal pro b-type natriuretic peptide; OAC: oral anticoagulants.

**Supplemental Table 5.** Quantile regression predictors of historical high-sensitivity cardiac troponin T concentrations and  $\Delta$  high-sensitivity cardiac troponin T

	Historical hs-cTnT		$\Delta$ hs-cTnT	
	Unadjusted model <i>Parameter estimate of median hs-cTnT, ng/l (95% CI)</i>	Adjusted model	Unadjusted model <i>Parameter estimate of <math>\Delta</math> hs-cTnT (95% CI)</i>	Adjusted model
<b>Age (years)</b>				
>84	19.9 (19.2-20.6)	13.6 (13.3-14.0)	34% (32-36)	38% (35-40)
64-75	13.0 (12.9-13.0)	9.4 (9.1-9.6)	33% (33-34)	36% (34-37)
76-84	9.0 (9.0-9.0)	7.0 (6.8-7.1)	33% (33-34)	36% (35-38)
<64	5.9 (5.7-6.1)	5.3 (5.2-5.5)	30% (28-32)	33% (31-34)
<b>Sex</b>				
Men	10.0 (10.0-10.0)	13.6 (13.3-14.0)	33% (33-34)	38% (35-40)
Women	9.5 (9.1-9.8)	11.6 (11.3-11.9)	33% (33-34)	36% (34-38)
<b>eGFR (mL/min/1.73m<sup>2</sup>)</b>				
$\geq 60$	7.3 (7.0-7.6)	13.6 (13.3-14.0)	32% (31-34)	38% (35-40)
30-60	16.0 (15.6-16.4)	17.3 (17.0-17.6)	33% (33-34)	41% (38-43)
<30	34.1 (32.9-35.3)	34.2 (33.0-35.4)	43% (41-46)	51% (48-55)
<b>Prior MI</b>				
No	9.0 (8.7-9.2)	13.6 (13.3-14.0)	33% (32-33)	38% (35-40)
Yes	14.0 (13.6-14.4)	15.3 (15.0-15.6)	32% (30-33)	36% (34-38)
<b>Prior heart failure</b>				
No	8.0 (7.9-8.1)	13.6 (13.3-13.9)	33% (33-34)	38% (36-40)
Yes	18.0 (17.7-18.3)	17.4 (17.0-17.7)	30% (29-31)	33% (31-35)
<b>Prior atrial fibrillation</b>				
No	8.0 (8.0-8.0)	13.6 (13.3-13.9)	33% (33-34)	38% (35-40)
Yes	14.3 (13.7-15.0)	14.7 (14.4-15.0)	30% (29-31)	33% (31-36)



**Prior stroke**

No	9.0 (8.8-9.2)	13.6 (13.3-13.9)	33% (33-34)	38% (36-40)
Yes	14.6 (13.9-15.3)	14.5 (14.0-14.9)	33% (32-35)	38% (36-41)

**Prior diabetes**

No	9.0 (8.9-9.1)	13.6 (13.3-13.9)	33% (33-34)	38% (35-40)
Yes	14.0 (13.4-14.6)	15.5 (15.1-15.9)	33% (32-34)	37% (35-40)

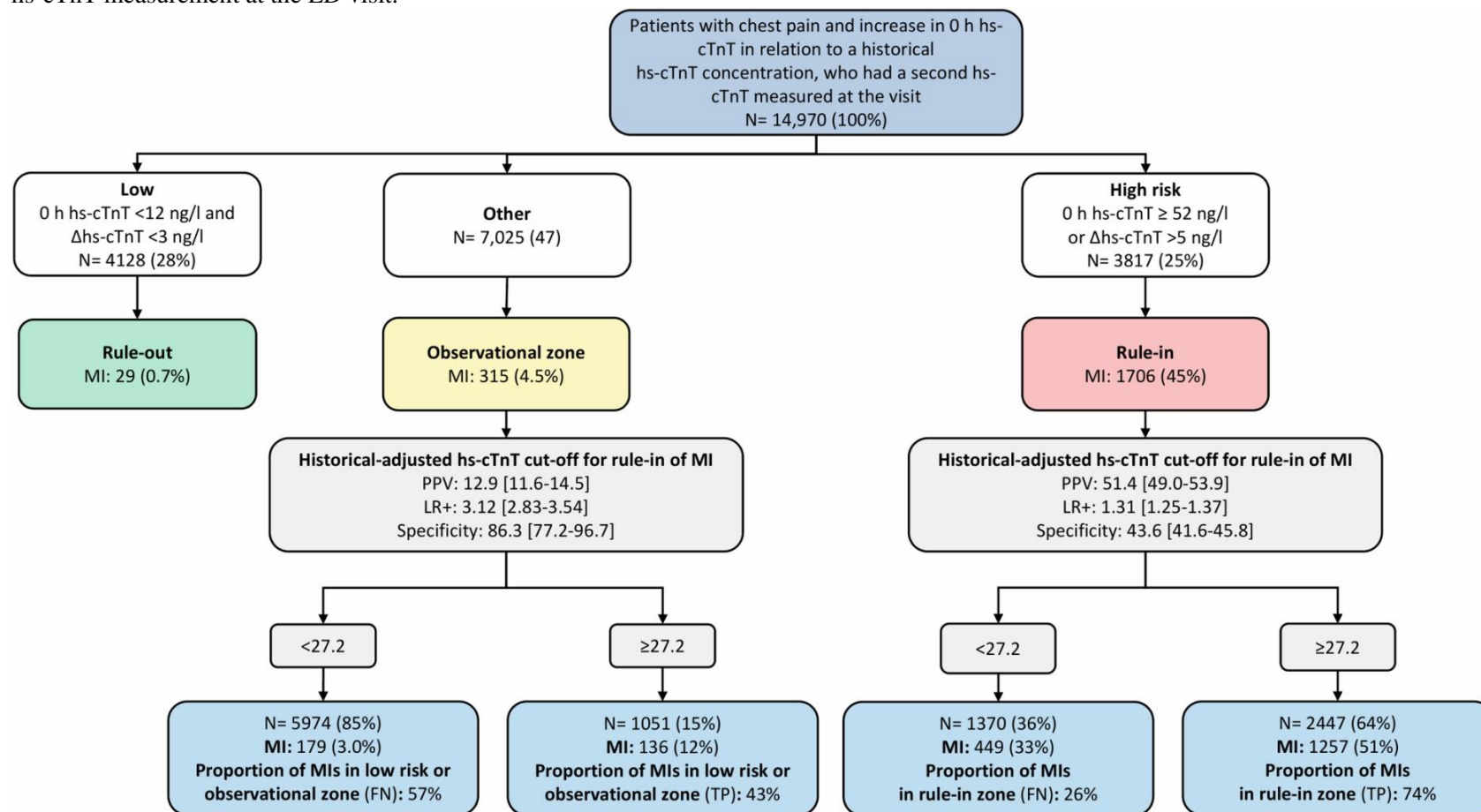
**Prior COPD**

No	9.0 (9.0-9.1)	13.6 (13.3-13.9)	33% (33-34)	38% (36-40)
Yes	14.0 (13.3-14.7)	15.3 (14.9-15.6)	32% (30-34)	38% (35-40)

---

Abbreviations: COPD: chronic obstructive pulmonary disease; MI: myocardial infarction; hs-cTnT: high-sensitivity cardiac troponin T; eGFR: estimated glomerular filtration rate.

**Supplemental Figure 1.** Diagnostic performance of historical-adjusted hs-cTnT for diagnosing myocardial infarction in patients with a second hs-cTnT measurement at the ED visit.



Note: No patients had a very low risk according to the 0 h hs-cTnT (i.e. a 0 h hs-cTnT <5 ng/l), as only patients with a positive historical  $\Delta$ hs-cTnT were included. The  $\Delta$ hs-cTnT concentration in the figure refers to the hs-cTnT change between the 0 h hs-cTnT and the second hs-cTnT measurement. Abbreviations: FN: false negative; Hs-cTnT: high-sensitivity cardiac troponin T; MI: myocardial infarction; LR+: positive likelihood ratio, PPV: positive predictive value; TP: true positive.