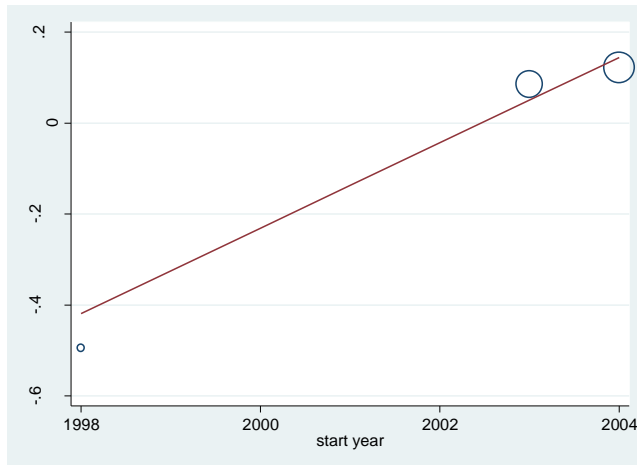


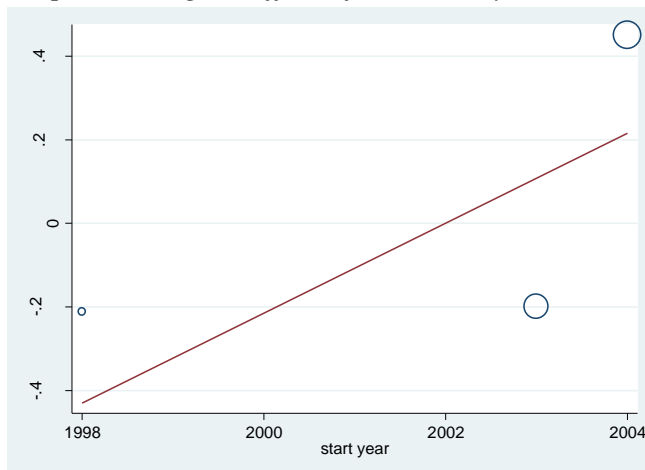
Supplementary Figure 1

Graph showing the effect of trial start year on death



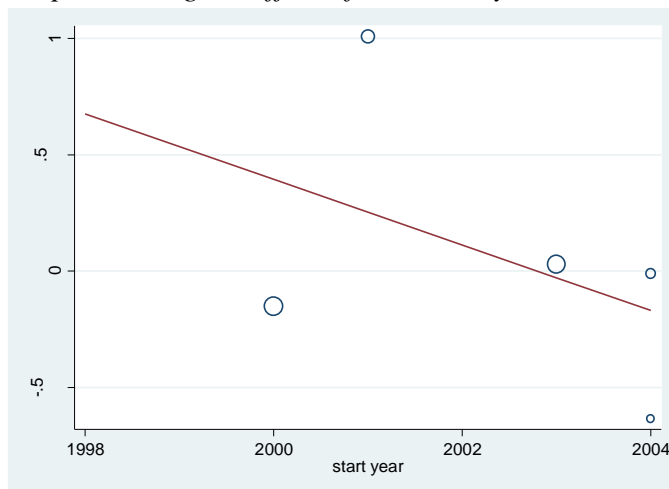
exp(b) (95%CI): 1.10 (0.24-4.95), p=0.573, n=3

Graph showing the effect of trial start year on HF



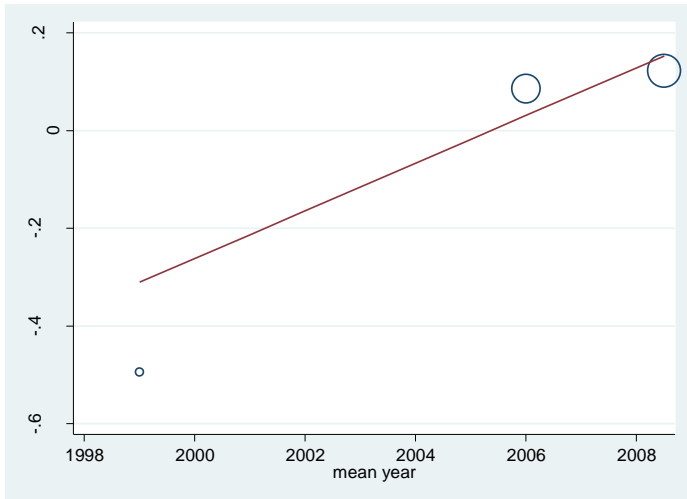
exp(b) (95%CI): 1.11 (0.16-7.95), p=0.613, n=3

Graph showing the effect of trial start year on HF or death



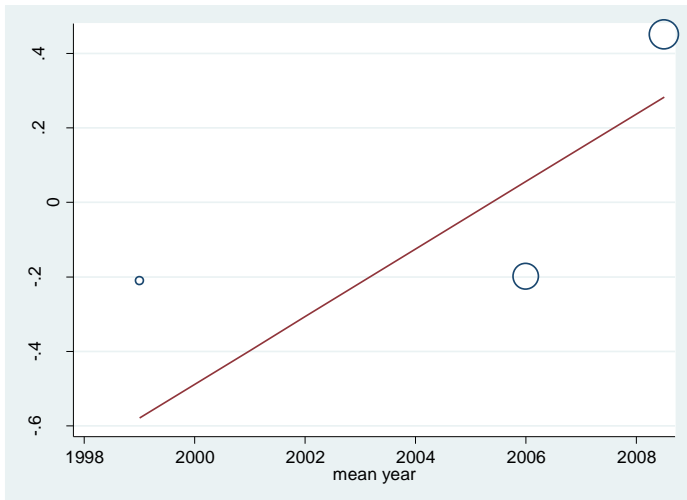
exp(b) (95%CI): 0.87 (0.50-1.49), p=0.469, n=5

Graph showing the effect of trial mean year on death



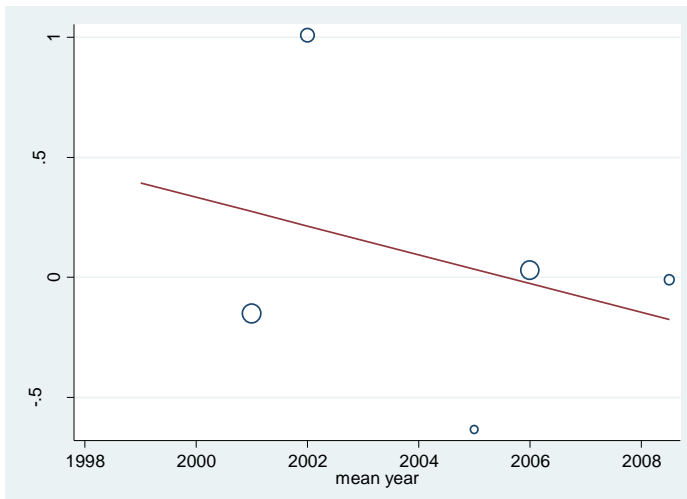
exp(b) (95%CI): 1.05 (0.44-2.49), p=0.603, n=3

Graph showing the effect of trial mean year on HF



exp(b) (95%CI): 1.10 (0.35-3.44), p=0.498, n=3

Graph showing the effect of trial mean year on HF or death



exp(b) (95%CI): 0.94 (0.67-1.32), p=0.612, n=5